

ADAPTERS OVER 10 W

TITAN US & EU 24 W

Characteristics

Captive cable
Input: Universal
U out 12 V
I out 2000 mA
No load power: < 300 mW
Efficiency ~ 83 %
Approvals: US (UL), EU (CE)
Mass production: Q1, 2013

Applications

Computer networking products:
Routers
Wireless routers
Set-top-boxes
Etc.

< 10 W

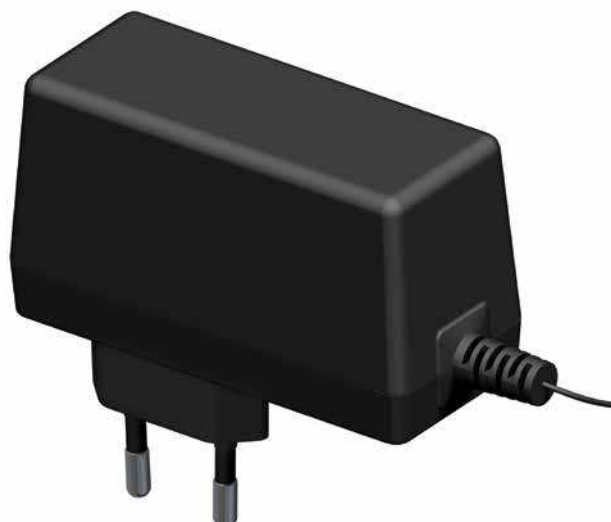
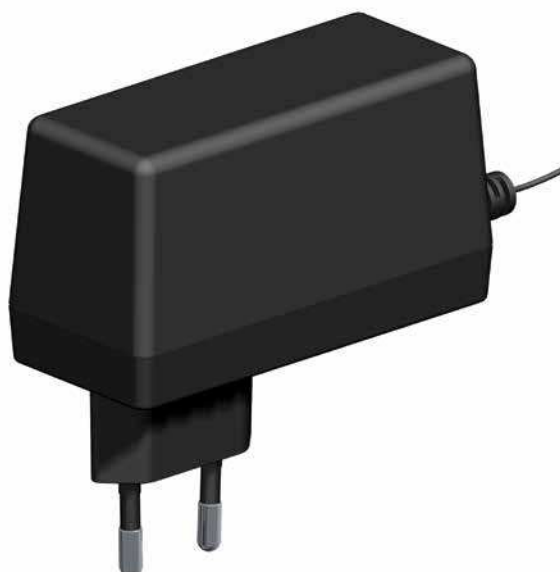
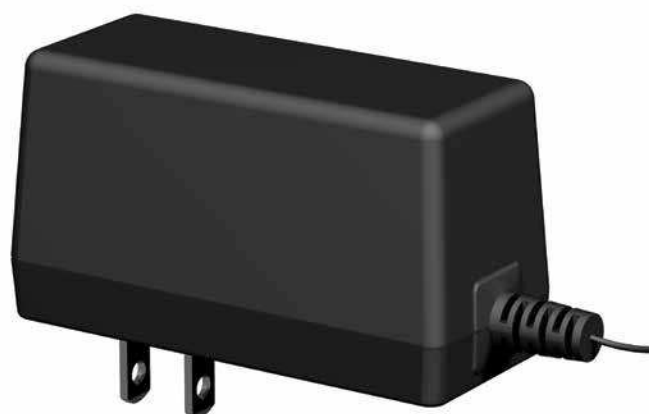
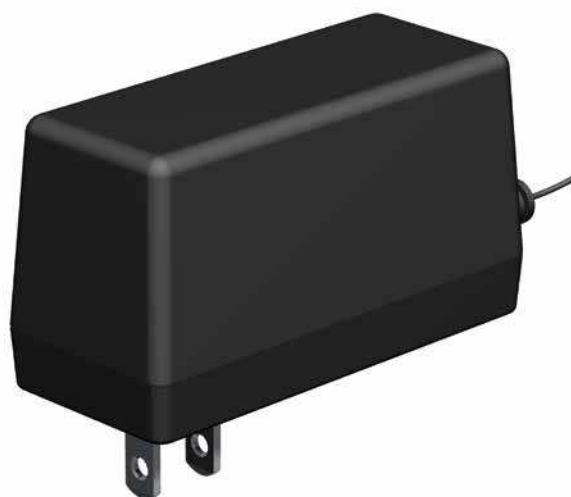
> 10 W

CAR

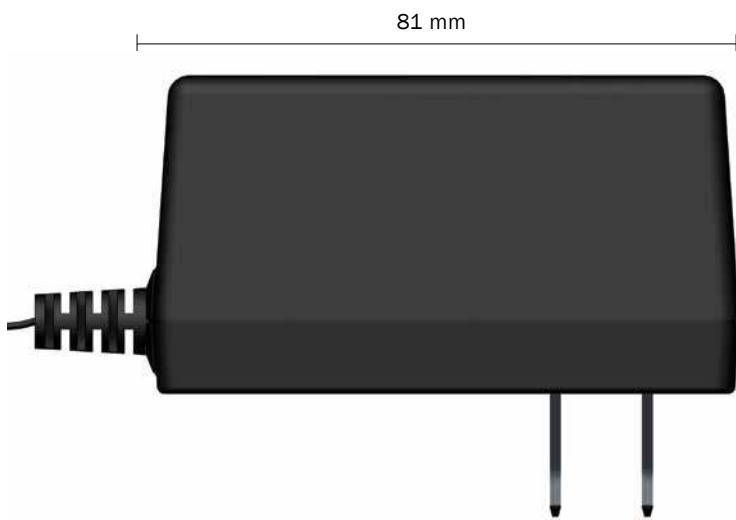
POWERS

LED

WIRELESS

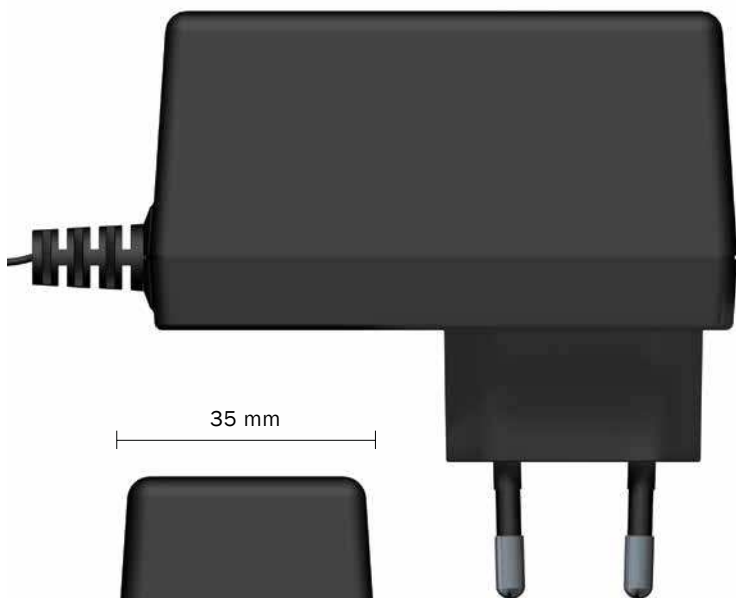


TITAN US & EU 24 W



61 mm

| U_{out} | I_{out} | No load power |
|-----------|-----------|---------------|
| 12 V | 2000 mA | < 300 mW |



81 mm

| U_{out} | I_{out} | No load power |
|-----------|-----------|---------------|
| 12 V | 2000 mA | < 300 mW |



< 10 W

> 10 W

CAR

POWERS

LED

WIRELESS