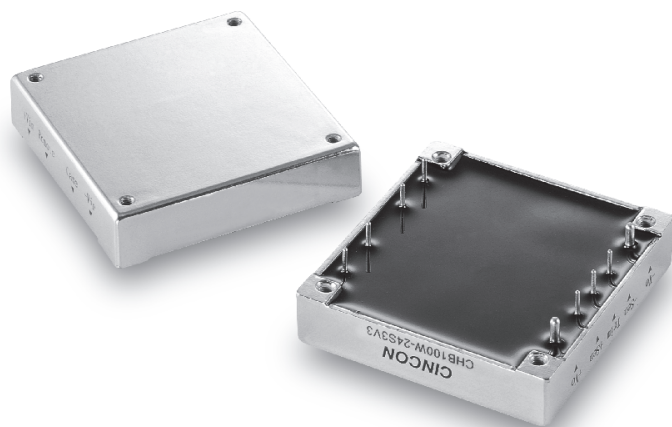


66 TO 100 WATT 4:1 INPUT RANGE DC-DC CONVERTERS



Features:

- 66-100W Isolated Output
- 4 : 1 Wide Input Range
- Half-Brick Package
- Efficiency to 88%
- Regulated Outputs
- Five-Sided Shield Metal Case
- Continuous Short Circuit Protection

Safety Approvals



Electrical Characteristics:

MODEL	INPUT VOLTAGE	OUTPUT VOLTAGE	OUTPUT CURRENT		INPUT CURRENT		%EFF	SIZE
			MIN	MAX	NO LOAD	FULL LOAD		
CHB100W-24S3V3	9-36 VDC	3.3VDC	0mA	20 A	35mA	3374mA	81.5	Half-Brick
CHB100W-24S05	9-36 VDC	5.0VDC	0mA	20 A	35mA	4990mA	83.5	Half-Brick
CHB100W-24S12	9-36 VDC	12 VDC	0mA	8.3 A	35mA	4902mA	85	Half-Brick
CHB100W-24S15	9-36 VDC	15 VDC	0mA	6.7 A	35mA	4817mA	86.5	Half-Brick
CHB100W-24S24	9-36 VDC	24 VDC	0mA	4.17 A	35mA	4849mA	86	Half-Brick
CHB100W-48S3V3	18-75VDC	3.3VDC	0mA	20 A	30mA	1708mA	80.5	Half-Brick
CHB100W-48S05	18-75VDC	5.0VDC	0mA	20 A	30mA	2422mA	86	Half-Brick
CHB100W-48S12	18-75VDC	12 VDC	0mA	8.3 A	30mA	2408mA	86.5	Half-Brick
CHB100W-48S15	18-75VDC	15 VDC	0mA	6.7 A	30mA	2381mA	87.5	Half-Brick
CHB100W-48S24	18-75VDC	24 VDC	0mA	4.17 A	30mA	2367mA	88	Half-Brick

NOTE: 1. Nominal Input Voltage 24 or 48 VDC

Specification

INPUT SPECIFICATIONS:

Input Voltage Range.....	24V.....	9-36V
	48V.....	18-75V
Undervoltage lockout	24Vin power up.....	8.8V
	24Vin power down	8.0V
	48Vin power up.....	17V
	power down	16V
Positive Logic Remote ON/OFF _{4, 5}		
Input Filter		PI Type

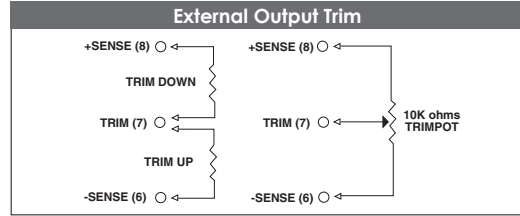
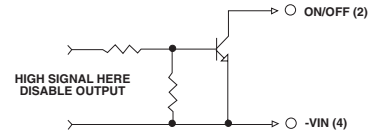
OUTPUT SPECIFICATIONS:

Voltage Accuracy :		±1% max.
Transient Response :25% Step Load Change.....		<500µ sec.
External Trim Adj. Range		±10%
Ripple & Noise, 20MHz BW, 3.3V & 5V.....		40mV RMS., max.
		100mV pk-pk, max.
	12V & 15V.....	60mV RMS., max.
		150mV pk-pk, max.
	24V.....	100mV RMS., max.
		240mV pk-pk, max.
Temperature Coefficient.....		±0.03%/°C
Short Circuit Protection.....		Continuous
Line Regulation ₁		±0.2% max.
Load Regulation ₂		±0.2% max.
Over Voltage Protection trip Range, % Vo nom.....		115-140%
Current Limit		110% ~140% Nominal Output

GENERAL SPECIFICATIONS:

Efficiency.....		See Table
Isolation Voltage	Input/Output.....	1500VDC min
	Input/Case.....	1500VDC min
	Output/Case.....	1500VDC min
Isolation Resistance		10 ⁷ ohm min.
Switching Frequency		250KHz, Typ.
Operating Case Temperature		-40°C to 100°C
Storage Temperature		-40°C to +105°C
Thermal Shutdown, case Temp.		105°C Typ.
Dimensions		2.28x2.40x0.50 inches (57.9x61.0x12.7 mm)
Case Material.....		Aluminum

Remote On/Off Control



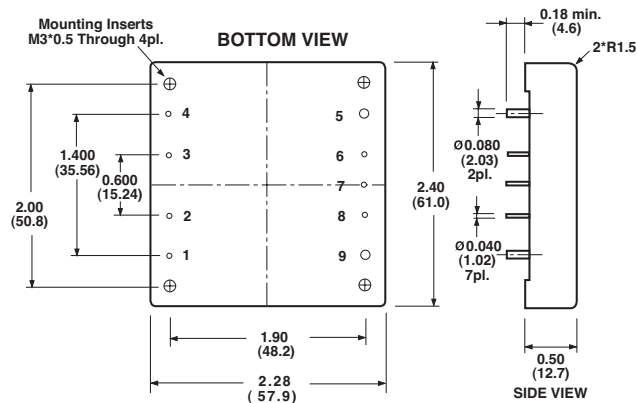
PIN CONNECTION	
Pin	Function
1	+V Input
2	ON/OFF
3	CASE
4	-V Input
5	-V Output
6	-Sense
7	Trim
8	+Sense
9	+Vout

NOTES:

- Measured From High Line to Low Line
- Measured From Full Load to Zero Load
- Output Ripple and Noise measured with 10µF tantalum and 1µF Ceramic capacitor across output
- Logic Compatibility Open Collector ref to -Input
Module ON > 3.5Vdc or Open Circuit
Module OFF < 1.8Vdc
- Suffix "N" to the Model Number with Negative Logic Remote ON/OFF
Module ON < 1.8Vdc
Module OFF >3.5Vdc or Open Circuit

CASE HB

All Dimensions In Inches (mm)
Tolerance Inches: x.xx= ±0.02, x.xxx= ±0.010
Millimeters: x.x= ±0.5, x.xx= ±0.25



All Specifications Typical At Nominal Line, Full Load and 25°C Unless Otherwise Noted.