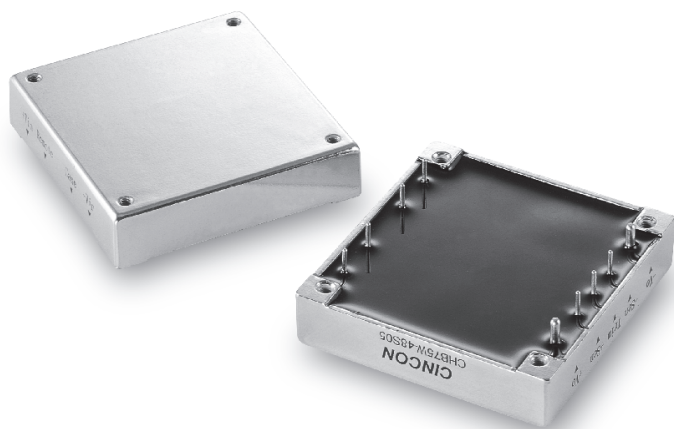


37.5-75 WATT 4:1 INPUT RANGE DC-DC CONVERTERS



Features:

- 37.5-75W Isolated Output
- Half Brick Package
- 4 : 1 Input Range
- Regulated Outputs
- Efficiency to 85%
- 300KHz Switching Frequency
- Five-Sided Shield Metal Case
- Continuous Short Circuit Protection

Safety Approvals



Electrical Characteristics:

MODEL	INPUT VOLTAGE	OUTPUT VOLTAGE	OUTPUT CURRENT		INPUT CURRENT		%EFF	SIZE
			MIN	MAX	NO LOAD	FULL LOAD		
CHB75W-24S33	9-36 VDC	3.3 VDC	0mA	15 A	50 mA	2611 mA	79	Half-Brick
CHB75W-24S05	9-36 VDC	5 VDC	0mA	15 A	50 mA	3811 mA	82	Half-Brick
CHB75W-24S12	9-36 VDC	12 VDC	0mA	6.25A	50 mA	3765 mA	83	Half-Brick
CHB75W-24S15	9-36 VDC	15 VDC	0mA	5 A	50 mA	3720 mA	84	Half-Brick
CHB75W-24S24	9-36 VDC	24 VDC	0mA	3.12 A	50 mA	3720 mA	84	Half-Brick
CHB75W-48S33	18-75 VDC	3.3 VDC	0mA	15 A	50 mA	1289 mA	80	Half-Brick
CHB75W-48S05	18-75 VDC	5 VDC	0mA	15 A	50 mA	1883 mA	83	Half-Brick
CHB75W-48S12	18-75 VDC	12 VDC	0mA	6.25 A	50 mA	1860 mA	84	Half-Brick
CHB75W-48S15	18-75 VDC	15 VDC	0mA	5 A	50 mA	1838 mA	85	Half-Brick
CHB75W-48S24	18-75 VDC	24 VDC	0mA	3.12 A	50 mA	1835 mA	85	Half-Brick

NOTE: 1. Nominal Input Voltage 24 or 48 VDC

Specification

INPUT SPECIFICATIONS:

Input Voltage Range.....	24V.....	9-36V
	48V.....	18-75V
Undervoltage lockout	24V _{in} power up.....	8.8V
	power down	8V
	24V _{in} power up.....	17V
	power down	16V
Positive Logic Remote ON/OFF3, 4		
Input Filter		PI Type

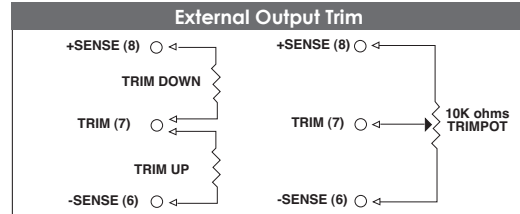
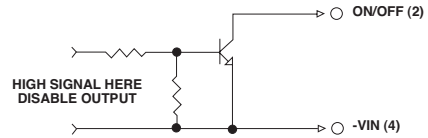
OUTPUT SPECIFICATIONS:

Voltage Accuracy :	±1% max.
Transient Response :25% Step Load Change.....	<500µ sec.
External Trim Adj. Range	±10%
Ripple & Noise, 20MHz BW, 3.3V & 5V.....	40mV RMS., max.
	100mV pk-pk, max.
	60mV RMS., max.
	150mV pk-pk, max.
	24V.....
	100mV RMS., max.
	240mV pk-pk, max.
Temperature Coefficient.....	±0.03%/°C
Short Circuit Protection.....	Continuous
Line Regulation1	±0.2% max.
Load Regulation2	±0.2% max.
Over Voltage Protection trip Range, % Vo nom.....	115-140%
Current Limit	110% ~160% Nominal Output

GENERAL SPECIFICATIONS:

Efficiency.....	See Table
Isolation Voltage	Input/Output.....1500VDC min
	Input/Case..... 1500VDC min
	Output/Case.....1500VDC min
Isolation Resistance	10 ⁷ ohm min.
Switching Frequency	300KHz, Typ.
Operating Case Temperature	-40°C to 100°C
Storage Temperature	-55°C to +105°C
Thermal Shutdown, case Temp.	100°C Typ.
Dimensions	2.28x2.40x0.50 inches
	(57.9x61.0x12.7 mm)
Case Material.....	Aluminum
Weight.....	.94g

Remote On/Off Control



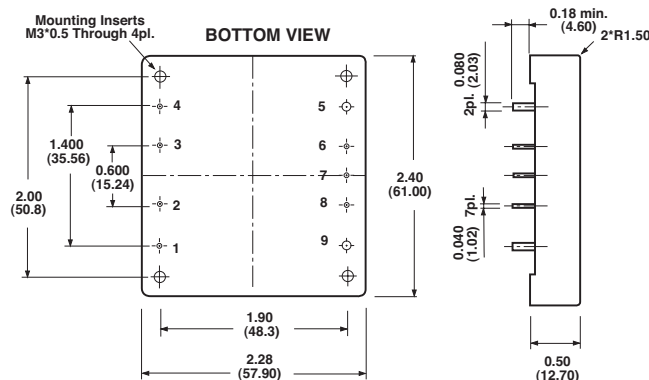
PIN CONNECTION	
Pin	Function
1	+Vin
2	ON/OFF
3	CASE
4	-Vin
5	-Vout
6	-Sense
7	Trim
8	+Sense
9	+Vout

NOTES:

1. Measured From High Line to Low Line.
2. Measured From Full Load to Zero Load.
3. Logic Compatibility Open Collector Ref. to -Input.
Module ON Open Circuit
Module OFF..... <0.8Vdc
4. Suffix "N" to the Model Number with Negative Logic Remote ON/OFF
Module ON < 0.8Vdc
Module OFF..... Open Circuit

CASE HB

All Dimensions In Inches(mm)
Tolerance Inches: x.xx= ±0.02, x.xxx= ±0.010
 Millimeters: x.x= ±0.5, x.xx= ±0.25



All Specifications Typical At Nominal Line, Full Load and 25°C Unless Otherwise Noted.