

DC DC

Part Num

CHB75-Dual SERIES

75 WATT DUAL OUTPUTS DC-DC CONVERTERS



Features:

- 75W Isolated Dual Output
- Half Brick Package
- Regulated Outputs
- Efficiency to 84%
- 400KHz Switching Frequency
- Total Output Power 75W with
- 15A Maximum Per Channel
- Continuous Short Circuit Protection

Safety Approvals



Electrical Characteristics:

MODEL	INPUT VOLTAGE	OUTPUT VOLTAGE	OUTPUT CURRENT		INPUT CURRENT		%EFF	SIZE
			Min	Max	NO LOAD	FULL LOAD		
CHB75-24D05-3V3	18-36VDC	Vo1=5V	0A	15A	50 mA	3765 mA	83% (2)	Half-Brick
CHB75-24D05-2V5		Vo2=3.3V	0A	15A				
CHB75-24D05-2V5	18-36VDC	Vo1=5V	0A	15A	50 mA	3765 mA	83% (2)	
CHB75-24D05-3V3		Vo2=2.5V	0A	15A				
CHB75-48D05-3V3	36-75VDC	Vo1=5V	0A	15A	30 mA	1860 mA	84% (2)	Half-Brick
CHB75-48D05-2V5		Vo2=3.3V	0A	15A				
CHB75-48D05-2V5	36-75VDC	Vo1=5V	0A	15A	30 mA	1860 mA	84% (2)	
CHB75-48D05-3V3		Vo2=2.5V	0A	15A				

NOTE: 1. Nominal Input Voltage 12, 24 or 48 VDC

Specification

INPUT SPECIFICATIONS:

Input Voltage Range.....	12V.....	18-36V
	48V.....	36-75V
Undervoltage lockout24Vin power up.....	.17V
	power down15.5V
	48Vin power up.....	.34V
	power down32.5V
Positive Logic Remote ON/OFF _{4, 5}		
Input Filter		PI Type

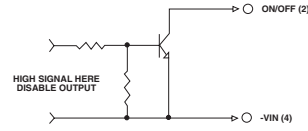
OUTPUT SPECIFICATIONS:

Voltage Accuracy :	±2% max.
Transient Response :25% Step Load Change.....	<500µ sec.
External Trim Adj. Range	±5%
Ripple & Noise, 20MHz BW6	
	3.3V & 5V & 2.5V.....
	40mV RMS., max.
	100mV pk-pk, max
Temperature Coefficient.....	±0.03%/°C
Short Circuit Protection.....	Continuous
Line Regulation ₁	±0.2% max.
Load Regulation ₂	±0.5% max.
Over Voltage Protection trip Range, % Vo nom.....	.115-.140%
Current Limit110% ~.140% Nominal Output

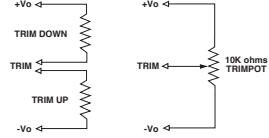
GENERAL SPECIFICATIONS:

Efficiency.....	See Table
Isolation Voltage	Input/Output.....1500VDC min
	Input/Case..... 1500VDC min
	Output/Case.....1500VDC min
Isolation Resistance	10 ⁷ ohm min.
Switching Frequency400KHz, Typ.
Operating Case Temperature	-40°C to 100°C
Storage Temperature	-55°C to +105°C
Thermal Shutdown, case Temp.	100°C Typ.
Dimensions2.28x2.40x0.52 inches
	(57.9x61.0x13.2 mm)
Case Material.....	Aluminum Baseplate with Plastic Case
Weight.....	.108g

Remote On/Off Control



External Output Trim



PIN CONNECTION

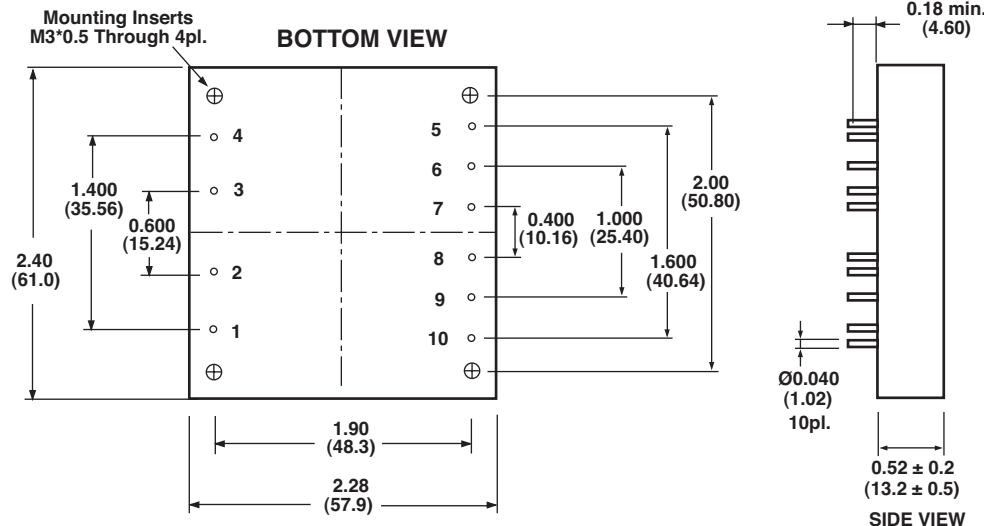
Pin	Function
1	+Vin
2	ON/OFF
3	CASE
4	-V in
5	+Vo ₂
6	-Vo ₂
7	Vo ₂ Trim
8	+Vo ₁
9	-Vo ₁
10	Vo ₁ Trim

NOTES:

1. Measured From High Line to Low Line.
2. Measured From Full Load to Min. Load.
3. Measured with Output Current on Output1 (Vo₁)
4. Logic Compatibility Open Collector Ref. to -Input
Module ON Open Circuit
Module OFF < 0.8Vdc
5. Suffix "N" to the Model Number with Negative Logic Remote ON/OFF.
6. The Output Noise is Measured with 10 µF Tantalum and 1µF Ceramic Capacitor across output.

CASE HB

All Dimensions In Inches(mm)
Tolerance Inches: x.xx= ±0.02, x.xxx= ±0.010
Millimeters: x.x= ±0.5, x.xx= ±0.25



All Specifications Typical At Nominal Line, Full Load and 25°C Unless Otherwise Noted.