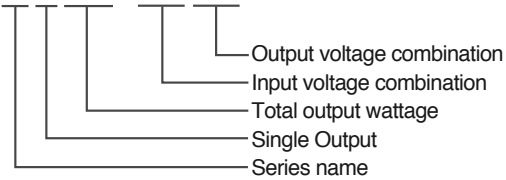


DS SERIES

DS50-1205



Features:

- 50 Watt, 100 Watt
- Small size
- DC input voltage
- Over current protection
- Over voltage protection
- Input Polarity protection
- 2 years Warranty



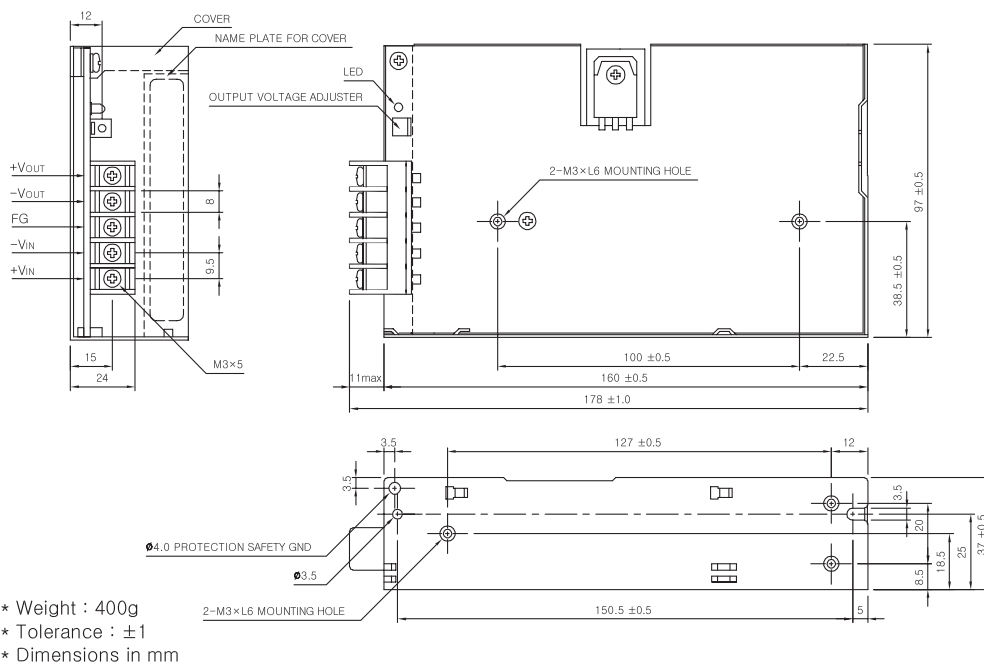
Specifications:

	MODEL		DS50-1205	DS50-1212	DS50-1215	DS50-1224	DS50-2405	DS50-2412	DS50-2415	DS50-2424
INPUT	VOLTAGE		DC12V (9~18V) / 8.0A				DC24V (19 ~ 36V) / 3.8A			
	VOLTAGE	[V]	5	12	15	24	5	12	15	24
OUTPUT	CURRENT	[A]	10	4.2	3.4	2.5	10	4.2	3.4	2.5
	REGULATION, LINE	[mV]	25 Max	60 Max	75 Max	120 Max	25 Max	60 Max	75 Max	120 Max
	REGULATION, LOAD	[mV]	50 Max	120 Max	150 Max	240 Max	50 Max	120 Max	150 Max	240 Max
	RIPPLE	[mVp-p]	50 Max	120 Max	150 Max	240 Max	50 Max	120 Max	150 Max	240 Max
	RIPPLE, NOISE	[mVp-p]	100 Max	170 Max	200 Max	290 Max	100 Max	170 Max	200 Max	290 Max
	TEMPERATURE DRIFT	[mV]	75 Max	180 Max	225 Max	360 Max	75 Max	180 Max	225 Max	360 Max
	RISE TIME	[ms]	500 Max (Rated Input Voltage, $I_o = 100\%$)				50 Max (DC IN 19V, $I_o = 100\%$)			
	HOLDING TIME	[ms]	10 typ (Rated Input Voltage, $I_o = 100\%$)				10 Typ (DC IN 19V, $I_o = 100\%$)			
PROTECTION CIRCUIT	OVER CURRENT PROTECTION	Works at over 110% of rating and recovers automatically								
	OVER VOLTAGE PROTECTION	Works at 115 ~ 140% of rating								
ELECTRICALLY ISOLATED	INPUT - OUTPUT	AC1,500V 1 minute current 20mA, DC 500V 100M Ω (At room temperature & Humidity)								
	INPUT - CASE, FG	AC1,500V 1 minute current 20mA, DC 500V 100M Ω (At room temperature & Humidity)								
	OUTPUT - CASE, FG	AC500V 1 minute current 100mA, DC 500V 100M Ω (At room temperature & Humidity)								
ENVIRONMENT	OPERATING TEMP AND HUMID	-10~+50°C, 20~90% RH(Non Condensing)								
		20~+75°C, 20~90% RH(Non Condensing)								
	VIBRATION	10~55Hz at 1G, 3 minutes period, 30 minutes along X, Y and Z axis								
	IMPACT	10G for 20ms once on each X, Y and Z axis								
SAFETY	SAFETY REGULATION	-								
	LINE CONDUCTED RF VOLTAGE	-								

DS50-S Specifications:

	MODEL		DS50-4805	DS50-4812	DS50-4815	DS50-4824	DS50-11005	DS50-11012	DS50-11015	DS50-11024
INPUT	VOLTAGE		DC48V (38~63V) / 2.0A				DC110V (85 ~ 160V) / 0.85A			
	VOLTAGE	[V]	5	12	15	24	5	12	15	24
OUTPUT	CURRENT	[A]	10	4.2	3.4	2.5	10	4.2	3.4	2.5
	REGULATION, LINE	[mV]	25 Max	60 Max	75 Max	120 Max	25 Max	60 Max	75 Max	120 Max
	REGULATION, LOAD	[mV]	50 Max	120 Max	150 Max	240 Max	50 Max	120 Max	150 Max	240 Max
	RIPPLE	[mVp-p]	50 Max	120 Max	150 Max	240 Max	50 Max	120 Max	150 Max	240 Max
	RIPPLE, NOISE	[mVp-p]	100 Max	170 Max	200 Max	290 Max	100 Max	170 Max	200 Max	290 Max
	TEMPERATURE DRIFT	[mV]	75 Max	180 Max	225 Max	360 Max	75 Max	180 Max	225 Max	360 Max
	RISE TIME	[ms]	500 Max (DC IN 38V, $I_o = 100\%$)				500 Max (DC IN 85V, $I_o = 100\%$)			
	HOLDING TIME	[ms]	10 typ (DC IN 38V, $I_o = 100\%$)				10 Typ (DC IN 85V, $I_o = 100\%$)			
	PROTECTION CIRCUIT	OVER CURRENT PROTECTION		Works at over 110% of rating and recovers automatically						
OVER VOLTAGE PROTECTION			Works at 115 ~ 140% of rating							
ELECTRICALLY ISOLATED	INPUT - OUTPUT		AC1,500V 1 minute current 20mA, DC 500V 100M Ω (At room temperature & Humidity)							
	INPUT - CASE, FG		AC1,500V 1 minute current 20mA, DC 500V 100M Ω (At room temperature & Humidity)							
	OUTPUT - CASE, FG		AC500V 1 minute current 100mA, DC 500V 100M Ω (At room temperature & Humidity)							
ENVIRONMENT	OPERATING TEMP AND HUMID		-10~+50°C, 20~90% RH(Non Condensing)							
	STORAGE TEMP AND HUMID		-20~+75°C, 20~90% RH(Non Condensing)							
	VIBRATION		10~55Hz at 1G, 3 minutes period, 30 minutes along X, Y and Z axis							
	IMPACT		10G for 20ms once on each X, Y and Z axis							
SAFETY	SAFETY REGULATION		-							
	LINE CONDUCTED RF VOLTAGE		-							

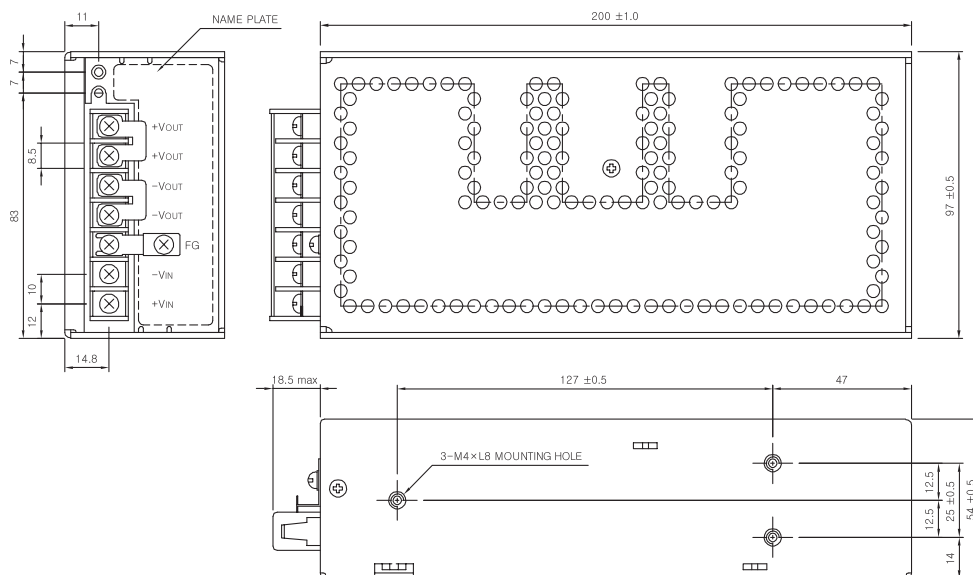
DS50-S EXTERNAL VIEW



DS100-S Specifications:

	MODEL		DS100-1205	DS100-1212	DS100-1215	DS100-1224	DS100-2405	DS100-2412	DS100-2415	DS100-2424
INPUT	VOLTAGE		DC12V (9~18V) / 8.0A				DC24V (19 ~ 36V) / 3.8A			
	VOLTAGE	[V]	5	12	15	24	5	12	15	24
OUTPUT	CURRENT	[A]	18	9	7	4.5	10	9	7	4.5
	REGULATION, LINE	[mV]	25 Max	60 Max	75 Max	120 Max	25 Max	60 Max	75 Max	120 Max
	REGULATION, LOAD	[mV]	50 Max	120 Max	150 Max	240 Max	50 Max	120 Max	150 Max	240 Max
	RIPPLE	[mVp-p]	50 Max	120 Max	150 Max	240 Max	50 Max	120 Max	150 Max	240 Max
	RIPPLE, NOISE	[mVp-p]	100 Max	170 Max	200 Max	290 Max	100 Max	170 Max	200 Max	290 Max
	TEMPERATURE DRIFT	[mV]	75 Max	180 Max	225 Max	360 Max	75 Max	180 Max	225 Max	360 Max
	RISE TIME	[ms]	500 Max (DC IN 9V, $I_o = 100\%$)				500 Max (DC IN 19V, $I_o = 100\%$)			
	HOLDING TIME	[ms]	10 typ (DC IN 9V, $I_o = 100\%$)				10 typ (DC IN 19V, $I_o = 100\%$)			
PROTECTION CIRCUIT	OVER CURRENT PROTECTION	Works at over 110% of rating and recovers automatically								
	OVER VOLTAGE PROTECTION	Works at 115 ~ 140% of rating								
ELECTRICALLY ISOLATED	INPUT - OUTPUT	AC1,500V 1 minute current 20mA, DC 500V 100M Ω (At room temperature & Humidity)								
	INPUT - CASE, FG	AC1,500V 1 minute current 20mA, DC 500V 100M Ω (At room temperature & Humidity)								
	OUTPUT - CASE, FG	AC500V 1 minute current 100mA, DC 500V 100M Ω (At room temperature & Humidity)								
ENVIRONMENT	OPERATING TEMP AND HUMID	-10~+50°C, 20~90% RH(Non Condensing)								
	STORAGE TEMP AND HUMID	20~+75°C, 20~90% RH(Non Condensing)								
	VIBRATION	10~55Hz at 1G, 3 minutes period, 30 minutes along X, Y and Z axis								
	IMPACT	10G for 20ms once on each X, Y and Z axis								
SAFETY	SAFETY REGULATION	-								
	LINE CONDUCTED RF VOLTAGE	-								

DS100-S EXTERNAL VIEW



- * Weight : 700g
- * Tolerance : ± 1
- * Dimensions in mm

DS100-S Specifications:

	MODEL		DS100-4805	DS100-4812	DS100-4815	DS100-4824	DS100-11005	DS100-11012	DS100-11015	DS100-11024
INPUT	VOLTAGE		DC48V (38~63V) / 4A				DC110V (85 ~ 160V) / 1.4A			
	VOLTAGE	[V]	5	12	15	24	5	12	15	24
OUTPUT	CURRENT	[A]	20	9	7	4.5	20	9	7	4.5
	REGULATION, LINE	[mV]	25 Max	60 Max	75 Max	120 Max	25 Max	60 Max	75 Max	120 Max
	REGULATION, LOAD	[mV]	50 Max	120 Max	150 Max	240 Max	50 Max	120 Max	150 Max	240 Max
	RIPPLE	[mVp-p]	50 Max	120 Max	150 Max	240 Max	50 Max	120 Max	150 Max	240 Max
	RIPPLE, NOISE	[mVp-p]	100 Max	170 Max	200 Max	290 Max	100 Max	170 Max	200 Max	290 Max
	TEMPERATURE DRIFT	[mV]	75 Max	180 Max	225 Max	360 Max	75 Max	180 Max	225 Max	360 Max
	RISE TIME	[ms]	500 Max (DC IN 48V, $I_o = 100\%$)				500 Max (DC IN 85V, $I_o = 100\%$)			
	HOLDING TIME	[ms]	10 typ (DC IN 48V, $I_o = 100\%$)				10 Typ (DC IN 85V, $I_o = 100\%$)			
PROTECTION CIRCUIT	OVER CURRENT PROTECTION	Works at over 110% of rating and recovers automatically								
	OVER VOLTAGE PROTECTION	Works at 115 ~ 140% of rating								
ELECTRICALLY ISOLATED	INPUT - OUTPUT	AC1,500V 1 minute current 20mA, DC 500V 100M Ω (At room temperature & Humidity)								
	INPUT - CASE, FG	AC1,500V 1 minute current 20mA, DC 500V 100M Ω (At room temperature & Humidity)								
	OUTPUT - CASE, FG	AC500V 1 minute current 100mA, DC 500V 100M Ω (At room temperature & Humidity)								
ENVIRONMENT	OPERATING TEMP AND HUMID	-10~+50°C, 20~90% RH(Non Condensing)								
	STORAGE TEMP AND HUMID	20~+75°C, 20~90% RH(Non Condensing)								
	VIBRATION	10~55Hz at 1G, 3 minutes period, 30 minutes along X, Y and Z axis								
	IMPACT	10G for 20ms once on each X, Y and Z axis								
SAFETY	SAFETY REGULATION	-								
	LINE CONDUCTED RF VOLTAGE	-								

DS100-S EXTERNAL VIEW

