

## ORDERING INFORMATION

# PSF50-3R3

Series name

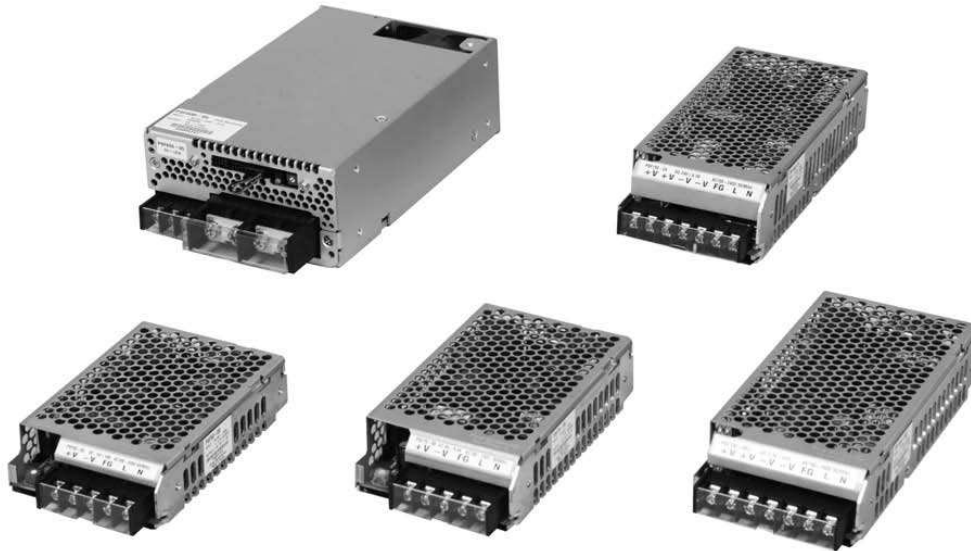
Total output wattage

Output voltage combination

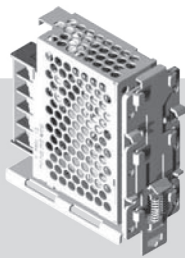
Option  
**None** : Bottom, Top case included  
**B** : Bottom case only included

### Features:

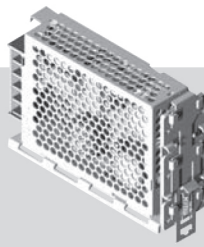
- 50 Watt
- Small size
- Universal input voltage range
- Over voltage protection
- Over current protection
- High power factor (Built-in PFC Circuit)
- 5 year warranty



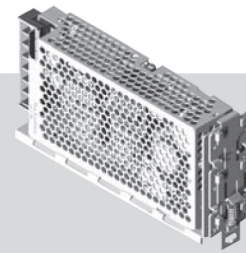
## DIN RAIL OPTIONS:



DIN RAIL : FD-15-A  
 SMPS : CSF15-S  
 CSF30-S



DIN RAIL : FD-50-A  
 SMPS : CSF50-S  
 CSF75-S  
 PSF50-S  
 PSF75-S

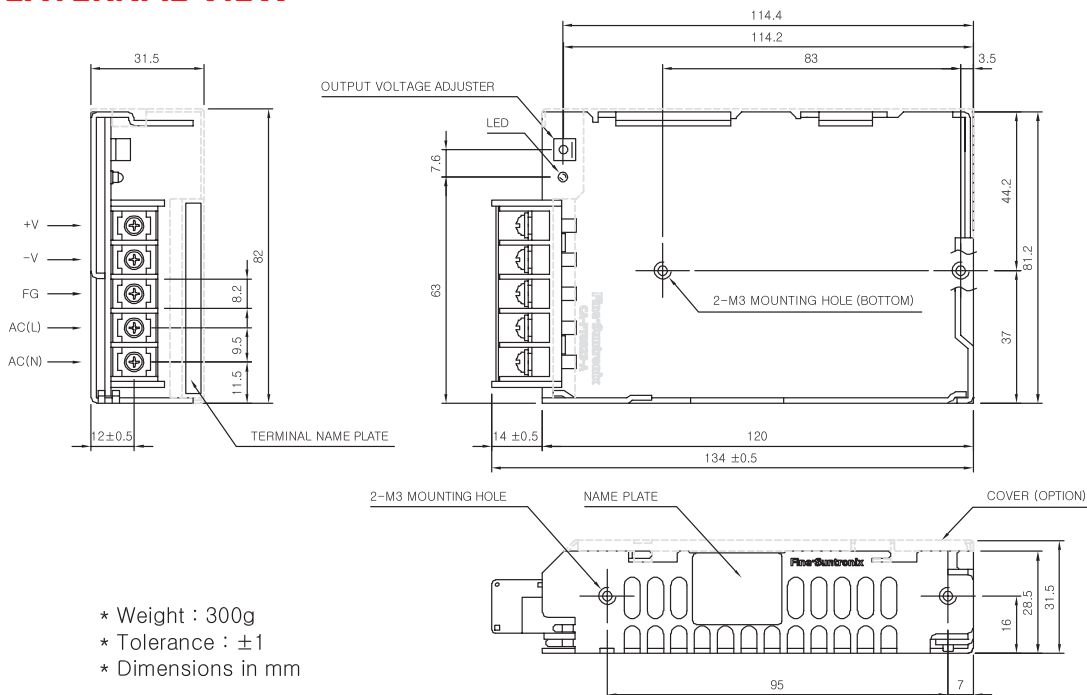


DIN RAIL : FD-100-A  
 SMPS : CSF100-S  
 CSF150-S  
 PSF100-S  
 PSF150-S

# PSF50-S SPECIFICATIONS

| MODEL                   |                           | PSF50-3R3  | PSF50-05  | PSF50-09 | PSF5-12 | PSF5015 | PSF50-24 | PSF50-48 |
|-------------------------|---------------------------|--|---|----------|---------|---------|----------|----------|
| VOLTAGE, FREQUENCY      |                           | AC100-240V (AC85-264V or DC120-370V), 50/60Hz (47~63Hz) Universal input voltage        |   |          |         |         |          |          |
| INPUT                   | CURRENT [A]               | 110V   | 0.5( $I_o=100\%$ )                                      |          |         |         |          |          |
|                         |                           | 220V   | 0.3( $I_o=100\%$ )                                      |          |         |         |          |          |
|                         | POWER FACTOR              | 110V   | 0.98  |          |         |         |          |          |
|                         |                           | 220V   | 0.93  |          |         |         |          |          |
| EFFICIENCY [%]          | 110V                      | 77 typ   | 81 typ  | 79 typ   | 80 typ  | 81 typ  | 82 typ   | 83 typ   |
|                         | 220V                      | 78 typ   | 82 typ  | 81 typ   | 82 typ  | 83 typ  | 84 typ   | 85 typ   |
| INRUSH CURRENT          |                           | 20A typ (ACIN 110V, $I_o=100\%$ ), 40A typ (ACIN 220V, $I_o=100\%$ ) at cold start     |   |          |         |         |          |          |
| OUTPUT                  | VOLTAGE [V]               | 3.3  | 5   | 9        | 12      | 15      | 24       | 48       |
|                         | CURRENT [A]               | 10   | 10  | 5.6      | 4.3     | 3.5     | 2.2      | 1.1      |
|                         | REGULATION, LINE [mV]     | 25 Max   | 25 Max  | 45 Max   | 60 Max  | 75 Max  | 120 Max  | 240 Max  |
|                         | REGULATION, LOAD [mV]     | 50 Max   | 50 Max  | 90 Max   | 120 Max | 150 Max | 240 Max  | 480 Max  |
|                         | RIPPLE [mVp-p]            | 80 Max   | 80 Max  | 120 Max  | 120 Max | 120 Max | 120 Max  | 150 Max  |
|                         | RIPPLE, NOISE [mVp-p]     | 120 Max  | 120 Max   | 150 Max  | 150 Max | 150 Max | 150 Max  | 250 Max  |
|                         | TEMPERATURE DRIFT [mV]    | 50 Max   | 75 Max  | 135 Max  | 180 Max | 225 Max | 360 Max  | 720 Max  |
|                         | RISE TIME [ms]            | 500 Max (AC IN 85V, $I_o=100\%$ )  |   |          |         |         |          |          |
|                         | HOLDING TIME [ms]         | 17 typ (AC IN 85V, $I_o=100\%$ )   |   |          |         |         |          |          |
|                         | PROTECTION CIRCUIT        | OVER CURRENT PROTECTION  | Works at over 105% of rating and recovers automatically |          |         |         |          |          |
| OVER VOLTAGE PROTECTION |                           | Works at 115-140% of rating  |   |          |         |         |          |          |
| ELECTRICALLY ISOLATED   | INPUT-OUTPUT              | AC3,000V 1 minute current 20mA, DC 500V 100M $\Omega$ (At room temperature & humidity) |   |          |         |         |          |          |
|                         | INPUT-CASE, FG            | AC2,000V 1 minute current 20mA, DC 500V 100M $\Omega$ (At room temperature & humidity) |   |          |         |         |          |          |
|                         | OUTPUT-CASE, FG           | AC500V 1 minute current 100mA, DC 500V 100M $\Omega$ (At room temperature & humidity)  |   |          |         |         |          |          |
| ENVIRONMENT             | OPERATING TEMP & HUMID    | -10~+70°C (Required derating), 20 ~ 90% RH (Non condensing)                            |   |          |         |         |          |          |
|                         | STORAGE TEMP & HUMID      | -20 ~+75°C, 20 ~ 90% RH (Non condensing)   |   |          |         |         |          |          |
|                         | VIBRATION                 | 10~55Hz at 1G, 3 minutes period, 30 minutes along X, Y and Z axis                      |   |          |         |         |          |          |
|                         | IMPACT                    | 10G for 20ms, once on each X, Y and Z axis   |   |          |         |         |          |          |
| SAFETY                  | SAFETY REGULATION         | UL, C-UL, CE, CB   |   |          |         |         |          |          |
|                         | LINE CONDUCTED RF VOLTAGE | Built to meet EN55022-B  |   |          |         |         |          |          |
|                         | HARMONIC ATTENUATOR       | Built to meet IEC61000-3-2   |   |          |         |         |          |          |

## PSF50-S EXTERNAL VIEW



Data sheets subject to change, please check with our sales office before ordering  
 Rev no. 062013