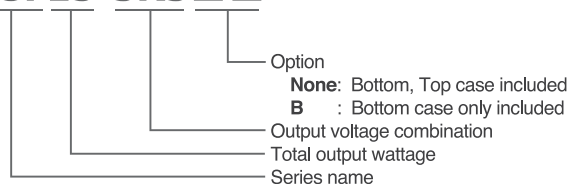
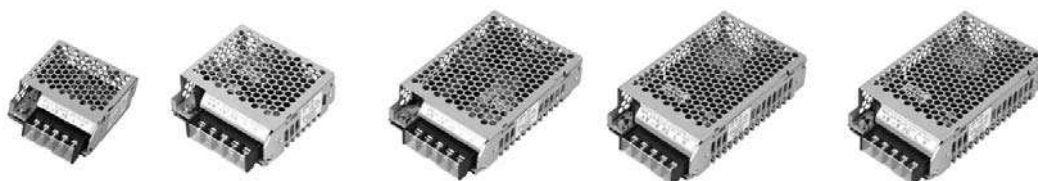


CSF15-3R3□□



Features:

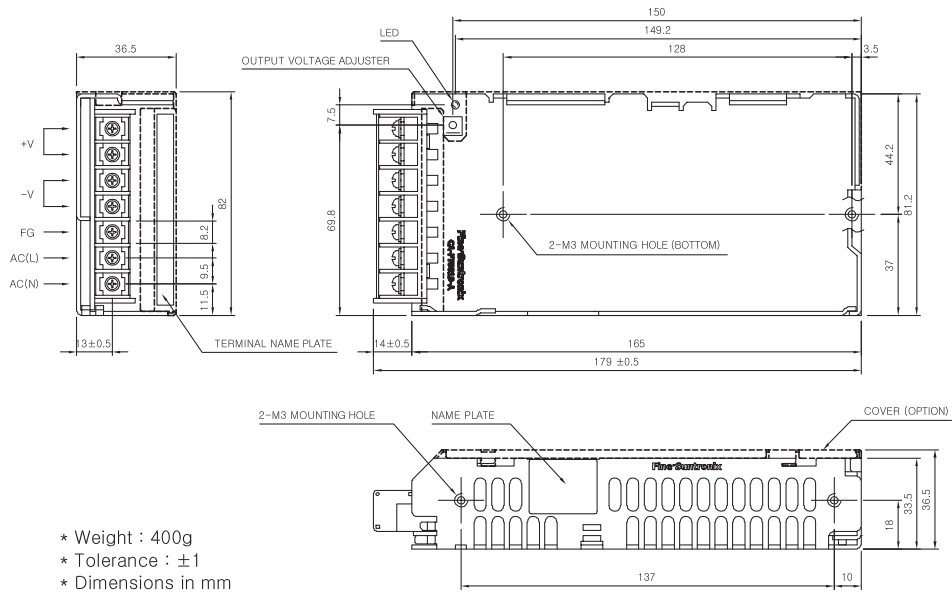
- 15 Watt
- Single Output
- Small Size
- Low cost
- Universal input voltage range
- Over voltage protection (except for 15W)
- Over current protection
- Up to 5 year warranty



CSF15-S SPECIFICATIONS:

	MODEL	CSF15-3R3	CSF15-05	CSF15-09	CSF15-12	CSF15-15	CSF15-24	
INPUT	VOLTAGE, FREQUENCY	AC 100-240V (AC85-264V or DC120-370V), 50/60Hz (47~440Hz) Universal input						
	CURRENT [A]	110V	0.3 (1 _o =100%)				0.4 (1 _o =100%)	
		220V	0.15 (1 _o =100%)				0.2 (1 _o =100%)	
	EFFICIENCY [%]	110V	65 typ	75 typ	75 typ	75 typ	77 typ	77 typ
220V		68 typ	76 typ	76 typ	76 typ	78 typ	78 typ	
INRUSH CURRENT		20A typ (AC IN 110V, 1 _o =100%), 40A typ (AC IN 220V, 1 _o =100%) at cold start						
OUTPUT	VOLTAGE [V]	3.3	5	9	12	15	24	
	CURRENT [A]	3	3	1.7	1.3	1	0.7	
	REGULATION, LINE [mV]	25 Max	25 Max	45 Max	60 Max	75 Max	120 Max	
	REGULATION, LOAD [mV]	50 Max	50 Max	90 Max	120 Max	150 Max	240 Max	
	RIPPLE [mVp-p]	80 Max	80 Max	120 Max	120 Max	120 Max	120 Max	
	RIPPLE, NOISE [mVp-p]	120 Max	120 Max	150 Max	150 Max	150 Max	150 Max	
	TEMPERATURE DRIFT 0~50°C [mV]	75 Max	75 Max	135 Max	180 Max	225 Max	360 Max	
	RISE TIME [ms]	200 Max (AC IN 100V, 1 _o =100%)						
HOLDING TIME [ms]	17 typ (AC IN 1000V, 1 _o =100%)							
PROTECTION CIRCUIT	OVER CURRENT PROTECTION	Works at over 105% of rating and recovers automatically						
	OVER VOLTAGE PROTECTION	-						
ELECTRICALLY ISOLATED	INPUT-OUTPUT	AC 3,000V 1 minute current 20mA, DC 500V 100MΩ (At room temperature & humidity)						
	INPUT-CASE, FG	AC 2,000V 1 minute current 20mA, DC 500V 100MΩ (At room temperature & humidity)						
	OUTPUT-CASE-FG	AC 500V 1 minute current 100mA, DC 500V 100mΩ (At room temperature & humidity)						
ENVIRONMENT	OPERATING TEMP AND HUMID	-10 ~ +70°C (Required derating), 20 ~ 90% RH (Non condensing)						
	STORAGE TEMP AND HUMID	-20 ~ +75°C, 20 ~ 90% RH (Non condensing)						
	VIBRATION	10 ~ 55Hz at 1G, 3 minute period, 30 minutes along X, Y and Z axis						
	IMPACT	10G for 20ms, once on each X, Y and Z axis						
SAFETY	SAFETY REGULATION	UL, C-UL, CE,						
	LINE CONDUCTED RF VOLTAGE	Complies with EN55022-A						

CSF15-S EXTERNAL VIEW



- * Weight : 400g
- * Tolerance : ±1
- * Dimensions in mm

Data sheets subject to change without notice, please check with our sales office before ordering
 Ref no. 062013