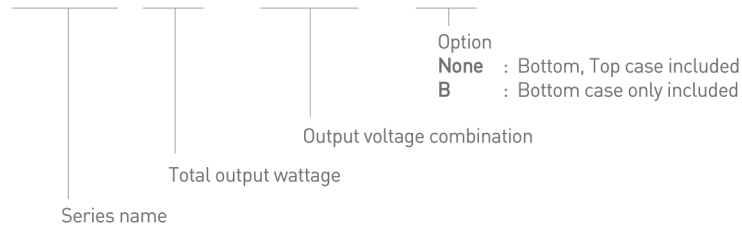


JSF25-3R3-□



Features:

- 25 Watt
- Low cost
- Inrush current limit
- Wide input voltage range (Universal input voltage or user selectable voltage)
- Over voltage protection
- Over current protection
- 3 year warranty

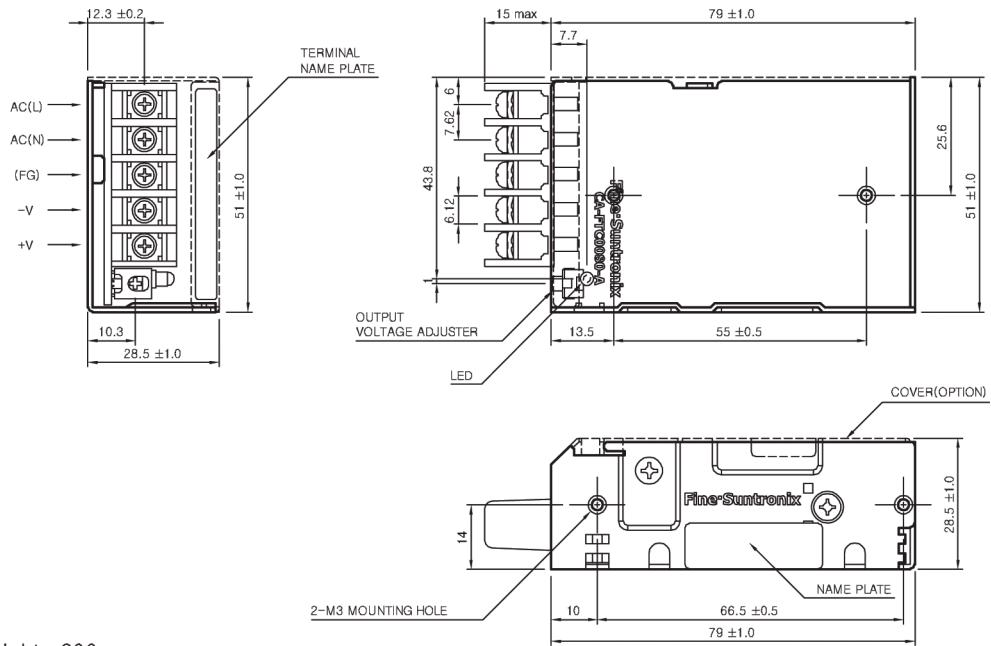


JSF25-S Specifications



MODEL	JSF25-3R3	JSF25-05	JSF25-09	JSF25-12	JSF25-15	JSF25-24	JSF25-48									
INPUT	VOLTAGE, FREQUENCY								AC 100-240V (AC 88 ~ 264V or DC 125 ~ 370V), 50/60Hz (47 ~ 440Hz), Universal input voltage							
	CURRENT	[A]	110V	0.45 (I _o =100%)			0.70 (I _o =100%)									
			220V	0.30 (I _o =100%)			0.40 (I _o =100%)									
	EFFICIENCY	[%]	110V	74 typ	79 typ	81 typ	82 typ	82 typ	84 typ	85 typ						
220V																
INRUSH CURRENT		15A typ (AC IN 110V I _o =100%), 30A typ (AC IN 220V, I _o =100%) at cold start														
OUTPUT	VOLTAGE	[V]	3.3	5	9	12	15	24	48							
	CURRENT	[A]	6	5	2.8	2.1	1.7	1.1	0.57							
	REGULATION, LINE	[mV]	17 Max	25 Max	45 Max	60 Max	75 Max	120 Max	240 Max							
	REGULATION, LOAD	[mV]	66 Max	75 Max	50 Max	60 Max	75 Max	120 Max	240 Max							
	RIPPLE	[mVp-p]	50 Max	50 Max	100 Max	100 Max	100 Max	100 Max	180 Max							
	RIPPLE NOISE	[mVp-p]	80 Max	80 Max	120 Max	120 Max	120 Max	120 Max	200 Max							
	TEMPERATURE DRIFT 0 ~ 50°C	[mV]	50 Max	75 Max	135 Max	180 Max	225 Max	360 Max	720 Max							
	RISE TIME	[ms]	1200 Max (AC IN 100V I _o =100%)													
HOLDING TIME	[ms]	14 typ (AC IN 100V I _o =100%)														
PROTECTION CIRCUIT	OVER CURRENT PROTECTION		Short protection													
	OVER VOLTAGE PROTECTION		-													
ELECTRICALLY ISOLATED	INPUT-OUTPUT		AC 3,000V 1 minute current 20 mA, DC 500V 100MΩ (At room temperature & humidity)													
	INPUT-CASE, FG		AC 1500V 1 minute current 20 mA, DC 500V 100MΩ (At room temperature & humidity)													
	OUTPUT-CASE,FG		AC 500V 1 minute current 100 mA, DC 500V 100MΩ (At room temperature & humidity)													
ENVIRONMENT	OPERATING TEMP AND HUMID		-25 ~ +70°C (Required derating), 20 ~ 90% RH (Non condensing)													
	STORAGE TEMP AND HUMID		-40 ~ +85°C, 10 ~ 90% RH (Non condensing)													
	VIBRATION		10 ~ 55Hz at 1G, 3 minute period, 30 minutes along X, Y and Z axis													
	IMPACT		10G for 20ms, once on each X, Y and Z axis													
SAFETY	SAFETY REGULATION		UL, C-UL, CE, CB													
	LINE CONDUCTED RF VOLTAGE		Complies with EN55011/EN55022-B, FCC-B													

JSF25-S External View



- * Weight : 200g
- * Tolerance : ± 1
- * Dimensions in mm

Data sheets are subject to change without notice, please check with our sales office before ordering.

Rev no. 062013