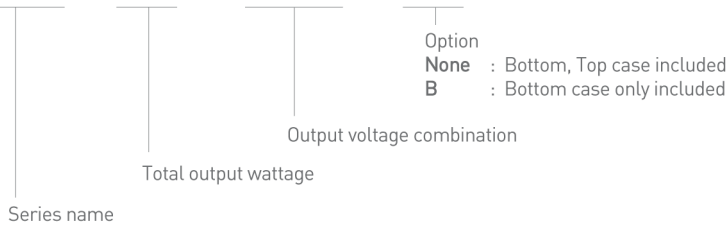


JSF100-3R3-□



Features:

- 100 Watt
- Low cost
- Inrush current limit
- Wide input voltage range (Universal input voltage or user selectable voltage)
- Over voltage protection
- Over current protection
- 3 year warranty



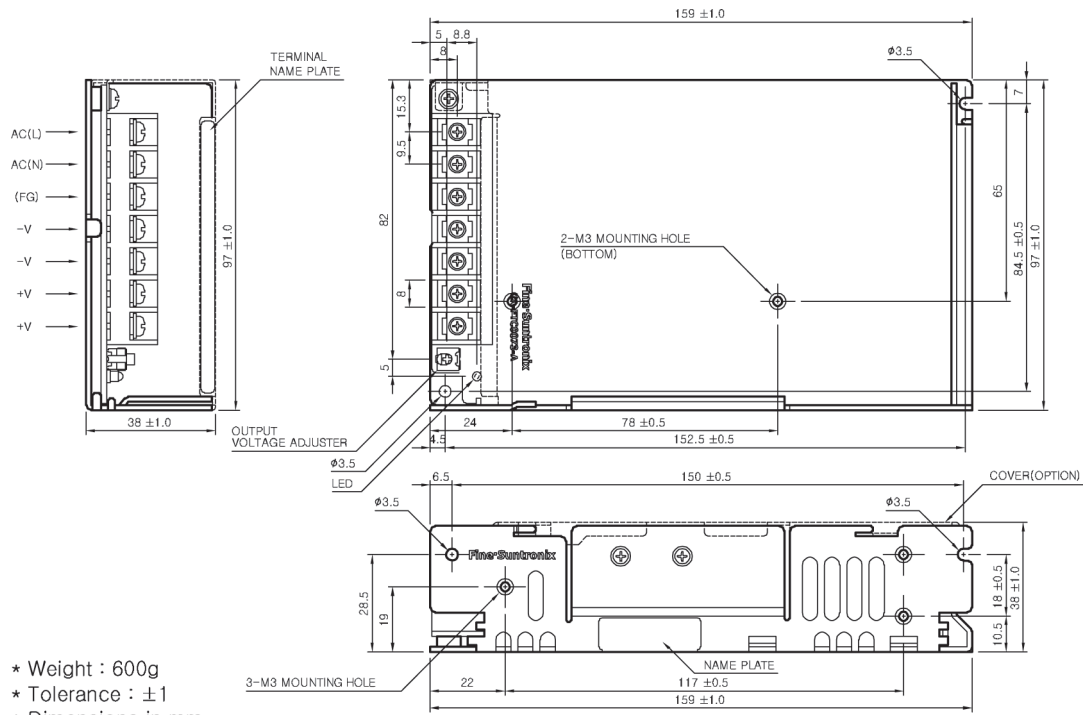
JSF100-S Specifications



	MODEL	JSF100-3R3	JSF100-05	JSF100-09	JSF100-12	JSF100-15	JSF100-24	JSF100-48	
INPUT	VOLTAGE, FREQUENCY	AC 100-240V (AC 88 ~ 264V or DC 125 ~ 370V), 50/60Hz (47 ~ 440Hz), Universal input voltage							
	CURRENT [A]	110V	2.2 (I _o =100%)						
		220V	1.2 (I _o =100%)						
	EFFICIENCY [%]	110V	74 typ	79 typ	80 typ	82 typ	85 typ	86 typ	86 typ
	220V								
	INRUSH CURRENT	30A typ (AC IN 110V I _o =100%), 60A typ (AC IN 220V, I _o =100%) at cold start							
OUTPUT	VOLTAGE [V]	3.3	5	9	12	15	24	48	
	CURRENT [A]	20	16	11	8.5	7	4.5	2.3	
	REGULATION, LINE [mV]	17 Max	25 Max	45 Max	60 Max	75 Max	120 Max	240 Max	
	REGULATION, LOAD [mV]	66 Max	50 Max	90 Max	60 Max	75 Max	120 Max	240 Max	
	RIPPLE *NOTE1 [mVp-p]	50 Max	50 Max	100 Max	100 Max	100 Max	100 Max	180 Max	
	RIPPLE NOISE *NOTE1 [mVp-p]	80 Max	80 Max	120 Max	120 Max	120 Max	120 Max	200 Max	
	TEMPERATURE DRIFT 0 ~ 50°C [mV]	50 Max	75 Max	135 Max	180 Max	225 Max	360 Max	720 Max	
	RISE TIME [ms]	1000 Max (AC IN 100V I _o =100%)							
	HOLDING TIME [ms]	14 typ (AC IN 100V I _o =100%)							
PROTECTION CIRCUIT	OVER CURRENT PROTECTION	Works at over 110% of rating and recovers automatically							
	OVER VOLTAGE PROTECTION	Works at 115 ~ 140% of rating							
ELECTRICALLY ISOLATED	INPUT-OUTPUT	AC 3,000V 1 minute current 20 mA, DC 500V 100MΩ (At room temperature & humidity)							
	INPUT-CASE, FG	AC 2000V 1 minute current 20 mA, DC 500V 100MΩ (At room temperature & humidity)							
	OUTPUT-CASE,FG	AC 500V 1 minute current 100 mA, DC 500V 100MΩ (At room temperature & humidity)							
ENVIRONMENT	OPERATING TEMP AND HUMID	-10 ~ +70°C (Required derating), 20 ~ 90% RH (Non condensing)							
	STORAGE TEMP AND HUMID	-20 ~ +75°C, 10 ~ 95% RH (Non condensing)							
	VIBRATION	10 ~ 55Hz at 1G, 3 minute period, 30 minutes along X, Y and Z axis							
	IMPACT	10G for 20ms, once on each X, Y and Z axis							
SAFETY	SAFETY REGULATION	UL, C-UL, CE, CB							
	LINE CONDUCTED RF VOLTAGE	Complies with EN55011/EN55022-B, FCC-B							

*NOTE1 : Ripple & Noise are measured at 20MHz of bandwidth by using a 12" twisted pair-wire terminated with a 0.1uF & 47uF parallel capacitor

JSF100-S External View



Data sheets are subject to change without notice, please check with our sales office before ordering.

Rev no. 062013