



219 SERIES CURRENT SENSE INDUCTORS

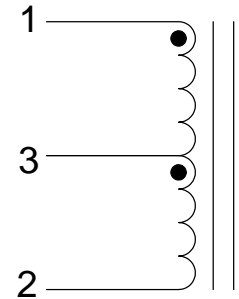
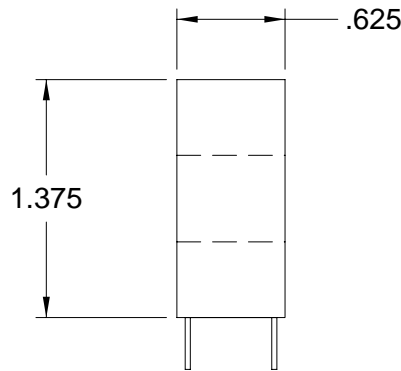
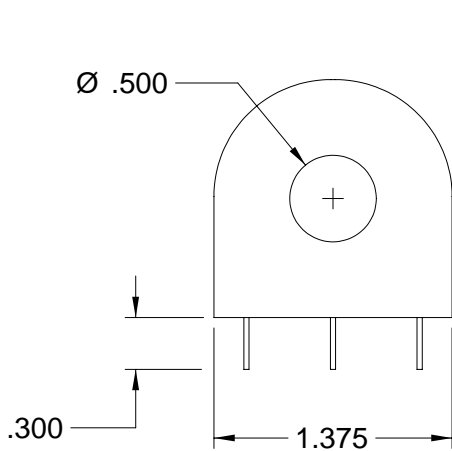
Features

- Frequency Range: 40Hz to 20kHz
- Operating Temperature: -40°C to +130°C
- Dielectric Strength Pri to Sec: 2.5k Vrms
- Fully Encapsulated Construction
- Non RoHS Version is available (note 3)

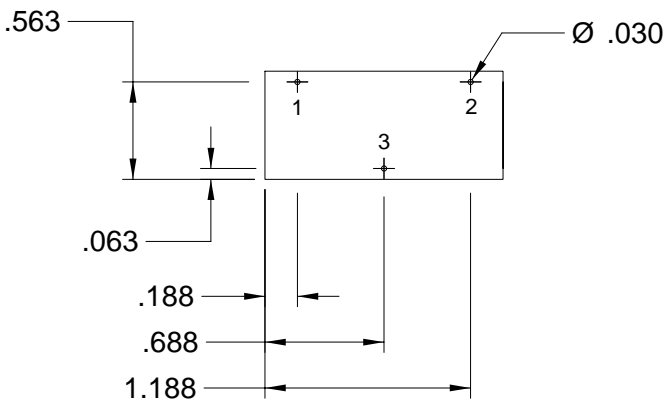


ELECTRICAL SPECIFICATIONS AT 25°C

Part No.	Turns Ratio 1T Pri	Primary Peak Current (Amp)	Secondary Inductance (H) Typical	DCR (Ω) Max.
PT21925	1000	25	70	70
PT21926	1000	30	70	70



SCHEMATIC



NOTES:

1. All dimensions are shown in inches
2. General tolerance ± 0.010 otherwise specified
3. For non-RoHS parts, replace PT prefix with 42- (e.g. PT21925 becomes 42-21925).
4. Terminating resistor (R_T) calculated:
 $R_T = V_{REF} * (N / I_{PEAK\ PRIMARY})$
5. Inductance: 0.1 Vrms @ 100Hz