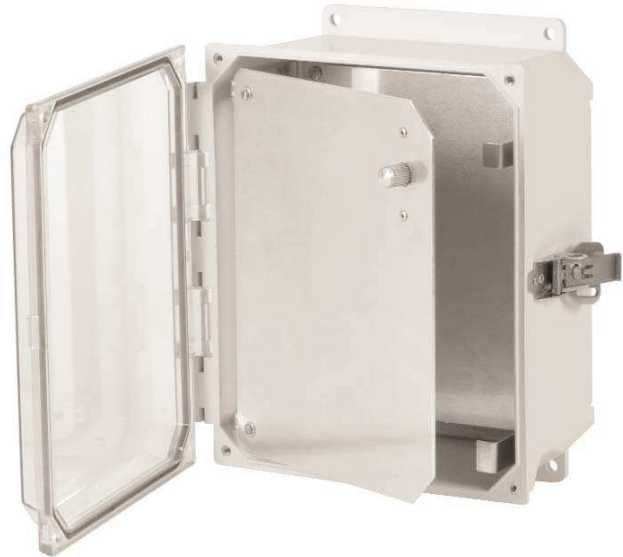




From Allied Moulded Products 

## ***AMU Series: Aluminum Hinged Front Panel***



### **Design Features**

- Hinged front panels available for Ultraline® sizes 10x8x4 through 20x16x10
- Panels designed to offer both a professional instrumentation display and a protective covering for electric wiring inside the enclosure
- The Ultraline® 1 inch raised cover allows room for digital display assembly on the hinge front panel surface
- Ultraline® enclosures offer optional viewing window covers and clear polycarbonate covers for a professional instrumentation display
- Latch design secures panel in place with one quarter turn
- Panel modifications available include: cut-in holes, panel height, and screen print
- Completely field-installable panel design with no required enclosure modifications
- Compliant with RoHS directive (Restriction of Hazardous Substances)



### **Ordering Part Numbers:**

**HFPU108  
HFPU164**

**HFPU120  
HFPU186**

**HFPU142  
HFPU206**



222 North Union Street • Bryan, Ohio 43506  
(419) 636-4217 • Fax (419) 636-2450  
<http://enclosures.alliedmoulded.com>



**ALLIED  
MOULDED  
PRODUCTS, Inc.**