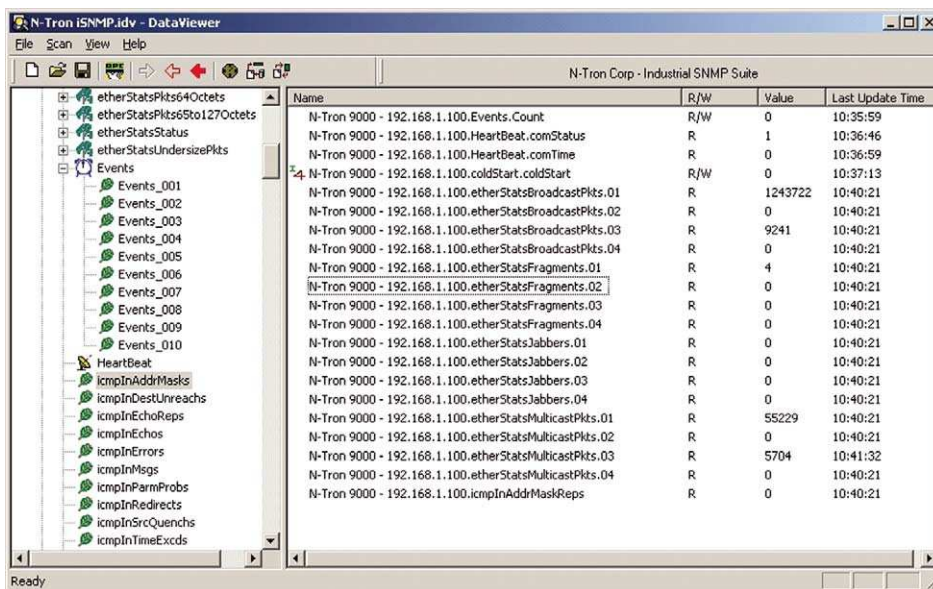


Analyze and Monitor your network with N-TRON's iSNMP Suite Software



N-TRON®'s IndustrialSNMP (iSNMP) Suite software specifically designed for the industrial marketplace, provides monitoring and analysis of N-TRON's 600, 700, 7000, and 9000 Series Industrial Ethernet Switches, as well as other SNMP capable Switches. iSNMP suite provides a real-time view of the health of your Ethernet network devices, the overall network traffic volume and status from within an HMI software environment.

Designed to operate on Windows®, iSNMP is an OPC Data Access Server that can interface with any v2 OPC client software. iSNMP not only gathers real-time network status information but also has the ability to analyze the raw data and issue warnings to you about the operating condition of your network. To ensure maximum uptime and protection, iSNMP also provides power supply monitoring of most UPS with an embedded microprocessor. So, if a battery needs replacement, or an UPS trips, you can have immediate notification. To fit various network sizes and needs, iSNMP Suite is available in three software editions: Basic, Expert and Enterprise.

iSNMP Suite Basic

This edition contains the core features needed to integrate Ethernet control network monitoring for up to fifty end devices into any OPC-client application, including:

Non-SNMP Device Support - iSNMP offers an OSI Layer 1 device "heartbeat" feature for any Ethernet network device. Device ping response and reply latency tags are created for all network devices by iSNMP, and are made available to HMI client applications via the iSNMP OPC Server.

Auto Discovery - This tool will search through your Ethernet network for SNMP manageable devices and iSNMP RMON probes. Once discovered, you can choose to add the devices to your monitoring system, or if the device is already defined in iSNMP, the software will pre-build the entire SNMP tag database for the devices.

Communicator/Data Viewer - Communicator is an iSNMP Suite read/write utility that operates independently of your OPC client application. This tool simplifies the process of starting up and troubleshooting your SNMP monitoring system. The Data Viewer feature allows the system programmer to view the SNMP tag data in real time, without having to develop screens in the GUI. This ensures that network SNMP data communications is taking place and helps reduce system trouble-shooting time.

SNMP Traps Support - iSNMP supports receiving SNMP trap data. Some SNMP manageable devices can be configured to send unsolicited data to network management software systems such as iSNMP. By configuring an SNMP device to send data without being "polled", such as when a critical system tag goes into an unfavorable state, you can reduce the need for "polling" the network device.

Pre-built Tag Databases - iSNMP Suite includes pre-built tags for many popular SNMP-manageable devices. If you are communicating to a supported device, you only have to designate the IP address of the network devices that you wish to communicate with, and iSNMP will automatically populate your system with a list of logically named system tags.

iSNMP Suite Expert

This edition includes all features of iSNMP Basic for monitoring networks up to fifty end devices, plus:

Network Analyst - Network Analyst gathers the raw SNMP data from your network devices, and computes meaningful network analysis that you can display in your OPC client application. Analyst presents a simple red, yellow, or green light summary of the overall network health, and useful network monitoring information.

MIB Template Generator - Map network device MIB addresses to iSNMP tag names. Once a template has been created, iSNMP's Auto-discovery tool will recognize the network device, and automatically pre-build the OPC tag name database for next time.

iSNMP Suite Enterprise

This edition includes all the features of iSNMP Expert and supports larger control networks of over fifty devices plus:

Custom SNMP Device Support - This feature allows you to import data from any SNMP manageable device in a matter of minutes. You can add a device to the system device list by using the tag browser interface. Simply define the new device, enter the IP address and the SNMP data address, and assign an OPC tag name. Your network is now ready to receive data from the added device.

iSNMP Agent - OPC/SNMP Agent enables the integration of OPC server data into an enterprise network management system such as HP Openview or Tivoli.

Benefits

- Allows Monitoring and Analysis of N-TRON's 600, 700, 7000, and 9000 Series Switches, as well as other SNMP capable Switches
- Support for 50+ devices depending on software edition
- Real-time Network Analysis
- Provides Power Supply Monitoring
- Non-SNMP Device Monitoring (heartbeat)
- Auto-Discovery of SNMP capable devices
- Pre-built Tag Databases
- Tag Filtering for quick searches
- iSNMP MIB Template Generator

Specifications

Network

IEEE 802.3 compliant Ethernet networks with SNMP manageable devices.

Hardware

- 700 MHZ Pentium
- 128 MB RAM
- 10MB HD space

OS Support

- Windows XP Pro
- Windows 2000
- Windows 2003

Any OPC-client application, including:

- Wonderware InTouch
- Siemens WinCC
- Simplicity HMI
- Iconics
- GE Fanuc iFix
- Allen Bradley RSView

Contact Information

Secure online
ordering
24/7/365 from

B&B electronics
MANUFACTURING COMPANY

International Headquarters: 707 Dayton Road - PO Box 1040 - Ottawa, IL 61350 USA
815-433-5100 Fax 815-433-5104 www.bb-elec.com orders@bb-elec.com support@bb-elec.com

European Headquarters: Westlink Commercial Park - Oranmore Co. Galway - Ireland
+353 91 792444 Fax +353 91 792445 www.bb-europe.com orders@bb-europe.com support@bb-europe.com

iSNMP Suite Ordering Information

iSNMP-BAS	Basic SNMP Server Node License CD
iSNMP-BAS-ES	Extended Customer Support for Basic
iSNMP-EXP	Expert SNMP Server Node License CD
iSNMP-EXP-ES	Extended Customer Support for Expert
iSNMP-ENT	Enterprise SNMP Server Node License CD
iSNMP-ENT-ES	Extended Customer Support for Enterprise