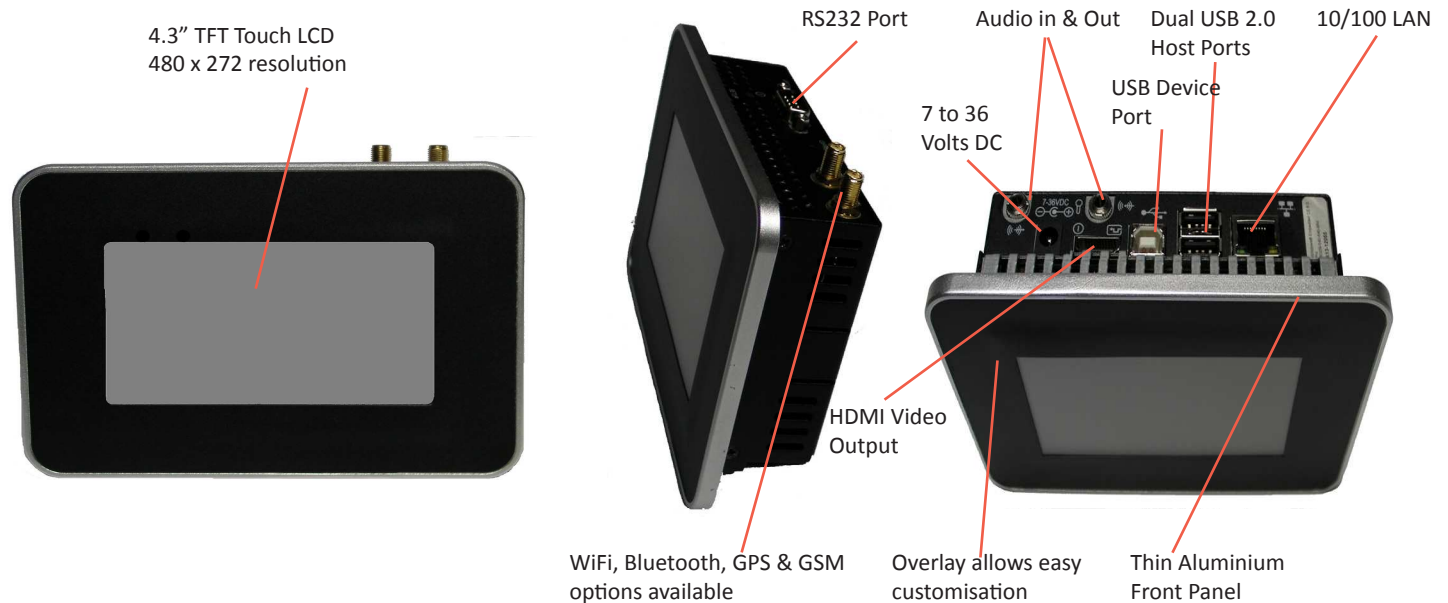


ALPHA 432

4.3" Cortex A8 LCD Computer Module
PRODUCT INFORMATION



ALPHA 432 - For the Engineers



ALPHA 432 - The Headlines

- ▶ 4.3" TFT touch screen LCD with 480 x 272 Resolution
- ▶ Extremely low power consumption
- ▶ Attractive but rugged machined aluminium front panel
- ▶ Front panel overlay allows customisation at low cost
- ▶ Fanless cooling so high reliability and quiet operation
- ▶ Wide input power range from 7 to 36 volts DC simplifies installation and reduces cost
- ▶ Available with Microsoft Windows CE 6.0 R3 or Ubuntu Linux Operating Systems
- ▶ Customisable splash screen allows easy branding (CE)
- ▶ Powerful onboard configuration tools (CE)
- ▶ Mounting options include Dry Wall, Panel & VESA
- ▶ 600MHz or 720MHz Cortex A8 ARM RISC Processor
- ▶ 256MB SDRAM memory, 512MB Flash, MicroSD Socket
- ▶ 10/100 Mbit LAN
- ▶ Dual external USB 2.0 & 1.1 Host Ports, Dual internal USB 2.0 & 1.1 Host Ports, single external USB Device Port
- ▶ Single external RS232 Serial Port, single internal RS232 Serial Port, optional RS422/485 Serial Port
- ▶ Audio Line In and Out
- ▶ 12 General purpose IO signals
- ▶ Real Time Clock with separate battery
- ▶ Designed, Manufactured and Technically supported in the UK

ALPHA 432 - In a few words

Designed and manufactured at Blue Chip Technology's facility in the heart of the UK the Alpha 432 is a reliable compact solution to a wide range of touch screen applications. Consuming approximately 3 watts the Alpha 432 delivers an impressive array of technology in a very compact unit. The machined aluminium front panel not only conveys quality but also is extremely rugged which allows a wide range of mounting options.

The Alpha 432 can be supplied with either Microsoft Windows CE or Linux operating systems and is the ideal platform to swiftly develop your new touch screen application.

If your installation requires a low cost, compact, powerful multimedia touch screen platform with great support and reliability - the Alpha 432 is the answer.



BS EN ISO 9001
Certificate No 33069



ALPHA 432

4.3" Cortex A8 LCD Computer Module PRODUCT INFORMATION

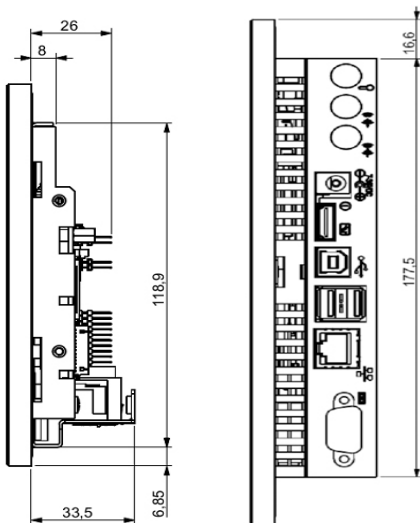


Processors & Memory

- Processors
 - Device: Cortex A8 ARM
 - CPU Cores: 1
 - Speed: 600MHz or 720MHz
 - Data Width: 32 bit
- Memory
 - Technology: LPDDR
 - Speed:
 - Channel Width: 32bits
 - Capacities: 256MB

Display

- Resolutions: 480 x 272 pixels
- Technology: a-Si TFT
- Touch Screen: 4 wire Resistive
- Active Area (W x H): 95 x 54 mm
- Pixel Size (W x H): 0.198 x 0.198 mm
- Colour Depth: 18 bit
- Interface: 18 bit RGB
- Viewing Direction: 6 o'clock
- Surface Hardness: 3H
- Input Mode: Stylus or Finger
- Operating Force: 80g
- Contrast Ratio: 250 typical
- Brightness: 400 cd/m²



Communications

- 10/100 Mbit LAN
- Two USB 2.0/1.1 external Host Ports, Two USB 2.0/1.1 internal Host Ports
- Single USB external Device Host Port
- Two RS232 ports, one RS422/485 port
- Wi-Fi 802.11 b/g and Bluetooth
- Optional CM-1 provides GPS, GSM, 2G Modem and accelerometer. 3G modem version in development.

Storage

- Onboard 512MB NAND Flash
- MicroSD Socket - HC compatible (up to 32GB)

Expansion and General Interfacing

- 12 General Purpose IO signals - internal
- 8 bit PC104 style expansion bus - internal

Operating System Support *

- Microsoft Windows CE 6.0 R3
- Ubuntu Linux 10.04 LTS

Environmental/Mechanical

- Operating Temperatures: Standard 0°C to 50°C
- Humidity: 10% to 85% non-condensing
- EMC: Emissions EN55022 (A), Immunity EN55024, Safety EN60950

Power

- Input Voltage: 7 to 36 Volts DC
- Power Consumption: Approximately 3 Watts

