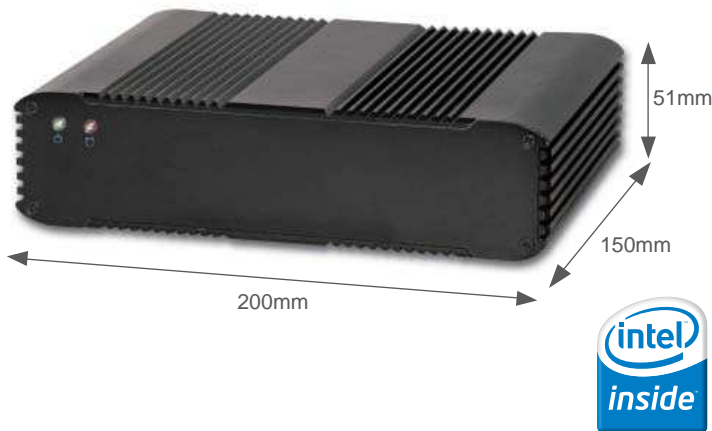




# WEBS-1310

Embedded rugged fan-less system with Intel® Atom™ Z510PT/Z520PT based 3.5" ECX board



## FEATURES

- Intel® Atom™ processor Z510PT/Z520PT and System Controller Hub US15WPT
- Wide temperature range and fan-less design are perfect for environment-critical applications
- One Mini-PCIExpress expansion and Antenna hole
- GPIO and rich I/O and good for versatile applications
- Rugged and compact are good for using at harsh environment
- Versatile mounting solutions such as Wall and Panel mount (Optional)
- Single DC 12V power input for easy system intergration

### SYSTEM

CPU	Intel® Atom™ Z510PT(1.1GHz)/Z520PT(1.3GHz)
FSB	400/533 MHz
BIOS	AMI BIOS
System Chipset	Intel® US15WPT
System Memory	One 200-pin SO-DIMM support DDR2 400/533 up to 2GB
Storage	1 x CF, 1 x SSD
Watchdog Timer	Programmable via S/W from 1sec. to 255min.
H/W Status Monitor	Temperature (CPU and System), Voltage

### REAR PANEL

Serial Port	1 x RS232 + 1 x RS232/422/485
Display	1 x VGA
USB	4 x USB 2.0
Audio Interface	Line-out and Mic-in
Ethernet	1 x Gigabit Ethernet
Digital IO	8-bit Digital IO

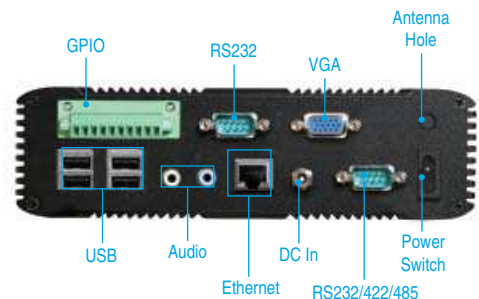
### Power Supply Unit

Power Input	DC 12V
Adaptor	AC 100~240V

### MECHANICAL & ENVIRONMENTAL

Operation Temperature	-25~70°C
Storage Temperature	-40~80°C
Relative Humidity	5~95% non-condensing
Dimension (WxDxH)	200x150x51 mm; 7.9"x5.9"x2"
Weight	1.6 kg

## REAR I/O



## ORDERING GUIDE

- **WEBS-1310-1100**  
System with PEB-2738 (Atom™ Z510PT 1.1GHz) + 1GB DDR2 + 512MB CF
- **WEBS-1310-1300**  
System with PEB-2738 (Atom™ Z520PT 1.3GHz) + 2GB DDR2 + 4GB CF