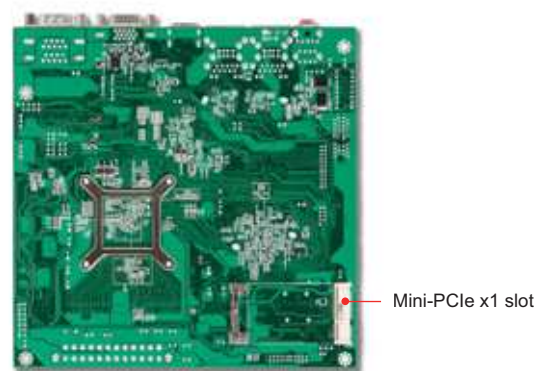
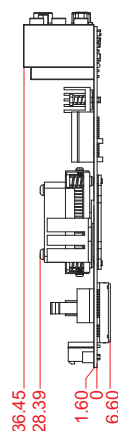
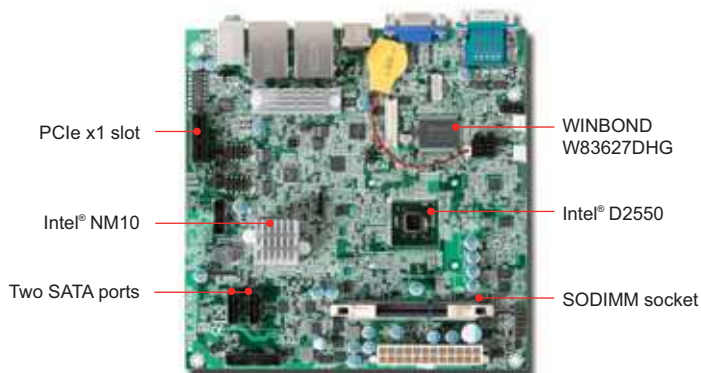


WADE-8077

Intel® Cedar trail Atom™ processor based Mini-ITX Board with dual display, dual Gigabit Ethernet, Two SATA Ports, Two COM Ports (optional up to 4 COM ports) and Six USB Ports

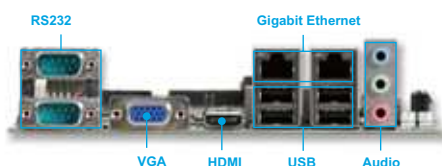


WADE-8077 is designed to provide high performance and flexibility for functional expansion and is ideal for applications in Gaming, Kiosk, Digital Signage, and Industrial Automation and control.

FEATURES

- Intel® Atom™ D2550 processor
- Intel® NM10 Chipset
- One 204-pin SODIMM supports single channel DDR3 SDRAM up to 4GB
- Dual display: VGA /LVDS (24-bit dual channel)/HDMI
- One Mini-PCIe and one PCI Express x1 expansion slot
- Two SATA II ports
- Two COM ports (optional up to 4 COM ports)
- 2.6W AMP function (optional)

REAR I/O



ORDERING GUIDE

AB1-3799	(R).WADE-8077-Mini-ITX ESB.Intel Cedar Trail 1.86G D2550 on Board+NM10.w/DDR3 SO-DIMM/VGA/HDMI/24bits LVDS/Dual GbE/COM/Audio/USB
AB1-3880	(R).WADE-8077-WS-Mini-ITX ESB.Intel Cedar Trail 1.86G D2550 on Board+NM10.w/o heat-sink. w/DDR3 SO-DIMM/VGA/HDMI/24bits LVDS/Dual GbE/COM/Audio/USB
AB1-3861	(R).WADE-8077-A2C-Mini-ITX ESB.Intel Cedar Trail 1.86G D2550 on Board+NM10. w/2.6W AMP. w/DDR3 SO-DIMM/VGA/HDMI/24bits LVDS/Dual GbE/COM/Audio/USB

PACKING LIST

One WADE-8077 Mini-ITX Main Board
One Installation CD
One SATA Cable
One I/O shield

GENERAL

Processor	- Intel® Atom™ D2550 (1.86GHz, 10W) processor in FCBGA559 package
Chipset	- Intel® NM10 Express chipset
BIOS	- Phoenix BIOS (SPI ROM)
Memory	- Supports single channel up to 4GB DDR3 800/1066 MHz SDRAM on one 204-pin SODIMM socket
Storage Devices	- 2x SATA II supporting up to 3.0Gb/s data transfer rate
Watchdog Timer	- Programmable via S/W from 1 sec. to 255 min.
Hardware Monitoring	- FAN Speed (CPU & System), Temperature (CPU & System), Voltage - Beep alarms for field fan out, over/under voltage of DC
Expansion Interface	- 1x PCI Express x1 slot (Gen 1, 2.5 GT/s) - 1x Mini-PCIe slot (Gen 1, 2.5 GT/s)

I/O INTERFACE

Super I/O	- WINBOND W83627DHG
Audio	- Intel® NM10 built-in High Definition Audio up to 96-kHz 24-bit - Realtek ALC662, 5.1 channels - Audio Jack DIP Light Pink/Lime/Light Blue
Ethernet	- RTL8111F*2 Dual Gigabit Ethernet
Serial Port	- 2x RS232 on rear I/O - 1x RS232 with header (optional) - 1x RS232/422/485 selectable with header (optional)
USB	- 4x USB 2.0 ports on rear I/O - 2x USB 2.0 ports on board with header - 480 Mb/s bus capable of high-speed/full-speed/low-speed data ranges
Keyboard & Mouse	- 1x PS/2 Keyboard & Mouse on board
GPIO	- On board programmable 8-bit Digital I/Os

DISPLAY

Graphic Controller	- Intel® Graphics Technology provides a visually stunning experience optimized for Blu-ray and HD video with Windows Vista support - Supports DirectX 9 compliant Pixel Shader v3.0 and OGL 3.0
Display Interface	- VGA: analog resolution up to 1920x1200 on rear I/O - HDMI: resolution up to 1920x1200 on rear I/O - LVDS: Digital 24-bits LVDS resolution up to 1920x1200 on board

Mechanical & Environment

Dimension	- 170(L) x 170(W)mm; 6.69"(L) x 6.69"(W)
Power Supply	- ATX 24-pin power input
Environment	- Operation Temperature: 0°C to 60°C - Storage temperature: -20°C to 80°C - Relative Humidity: 5% to 95%, non-condensing
MTBF	- Over 140,000 hours at 40°C

