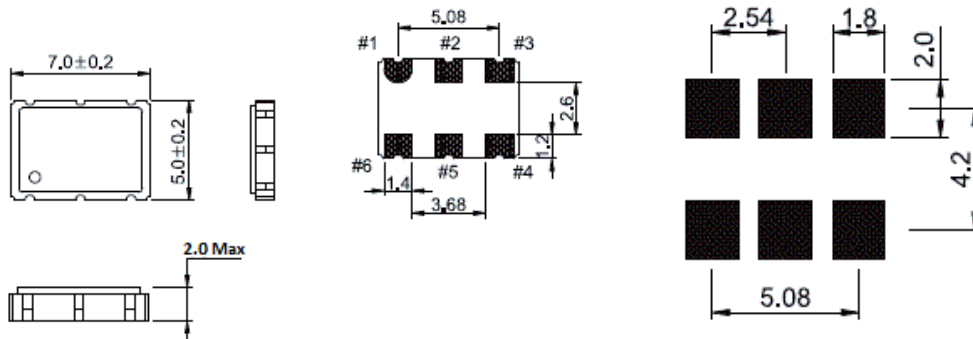


CVM57C Series Dual Frequency VCXO

5x7 Ceramic 6 Pad
RoHS Compliant
CMOS
2.5V or 3.3V
10.000MHz to
250.000MHz
Single or Dual Frequency

Dimensions are in millimeters. Dot indicates pin one location.

Land Pattern



Electrical Specifications

| | | |
|---------------------------------|--|---|
| Frequency Range | | 10.000MHz to 250.000MHz |
| Operating Temperature Range | | 0°C to 70°C, -20° to 70°C or -40° to 85°C |
| Storage Temperature Range | | -55°C to 125°C |
| Supply Voltage | VDD ±5% | 2.5 Or 3.3 |
| Waveform | | CMOS |
| Supply Current | 2.5VDC 3.3VDC | 20mA Typical 25mA Typical |
| Load | 2.5VDC 3.3VDC | 15pF HCMOS 10 TTL Gates or 30pF HCMOS |
| Frequency Tolerance / Stability | Inclusive of Operating Temp Range, Supply Voltage and Load | 10ppm,20ppm, 25ppm, 50ppm Or 100ppm |
| Duty Cycle | 50% of Waveform | 50 ± 5% |
| Rise Fall Time | | 4nSecond Max |
| Period Jitter (RMS) | | <2.5pSecond Max |
| Phase Jitter | 12KHz to 20MHz | <1.0pSecond Typical |
| Startup Time | | 10mSeconds Max |
| Vol | | 10% Vdd Max |
| Voh | | 90% Vdd Min |
| Pullability | | ±100ppm |
| Linearity | | 10% |
| Tri-State | VIH≥70% of VDD VIH≤30% of VDD | Enables Output Disables Output: High Impedance |
| Tristate Current Consumption | Disables | 16mA |
| Aging | | ±5.0ppm First Year |

| Part Marking | |
|--------------|---|
| Line #1 | CVM57C |
| Line #2 | XX.XXX M XX.XXX = Frequency (5 Digits Max + Decimal) M = Frequency Unit Of Measure (MHz) |
| Line #3 | XX YY ZZ XX = Crescent Manufacturing Identifier YY = Last Two Digits of Year ZZ = Week of Year |

| Pad Connections | |
|-----------------|------------------------------|
| Pad 1 | VC |
| Pad 2* | Tristate or Frequency Select |
| Pad 3 | Ground |
| Pad 4 | Output |
| Pad 5 | No Connect |
| Pad 6 | Supply Voltage |

*No Tristate With Dual Frequency

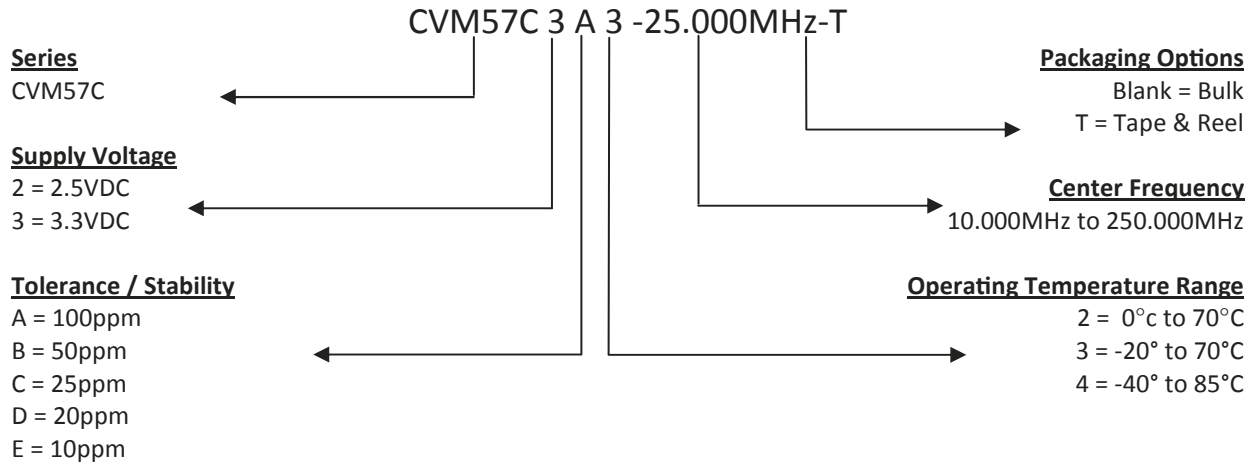
| Single Frequency Reference Table | | |
|----------------------------------|----------|-------------------------|
| Pin 1 | Pin 2 | Corresponding Frequency |
| VC | Tristate | Frequency 1 |

| Dual Frequency Reference Table | | |
|--------------------------------|-----------|-------------------------|
| Pin 1 | Pin 2 | Corresponding Frequency |
| VC | Logic "0" | Frequency 1 |
| VC | Logic "1" | Frequency 2 |

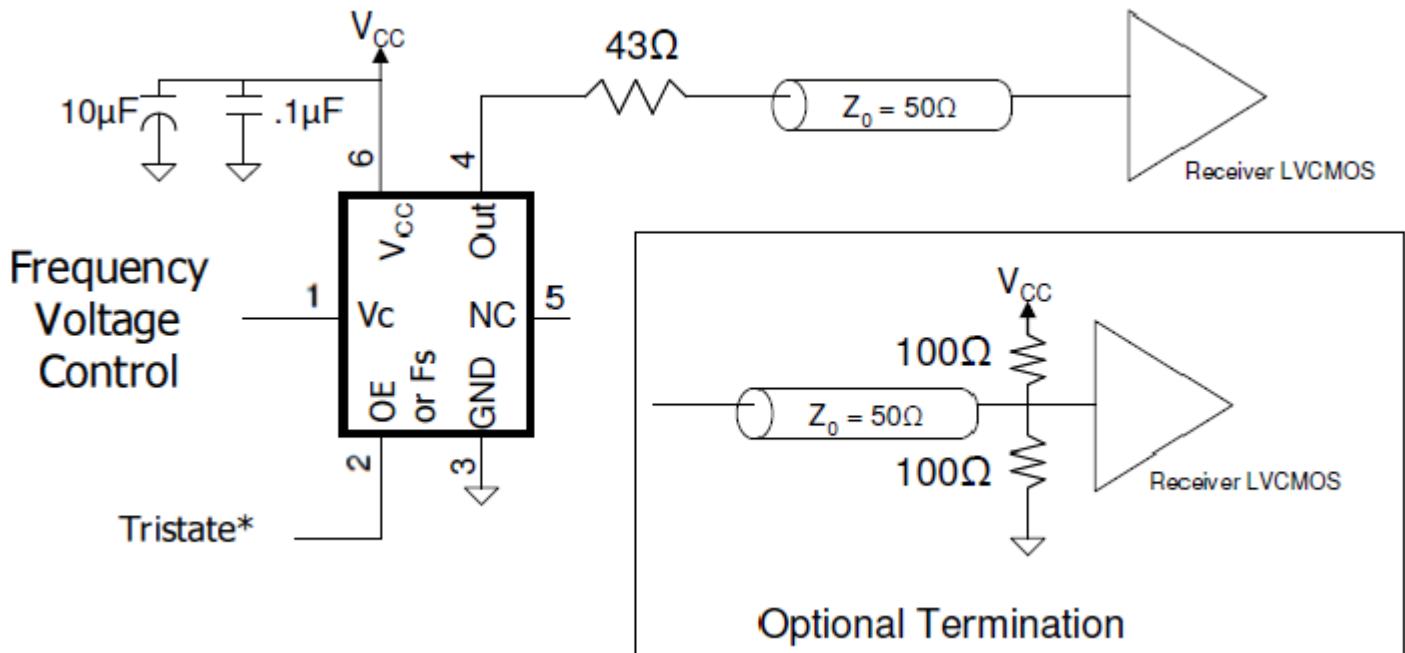
| Phase Noise | |
|------------------|------------|
| Offset Frequency | 70.000MHz |
| 100Hz | -88dBc/Hz |
| 1KHz | -115dBc/Hz |
| 10KHz | -120dBc/Hz |
| 100KHz | -125dBc/Hz |
| 1MHz | -130dBc/Hz |
| 10MHz | -145dBc/Hz |

| Mechanical / Environmental | |
|----------------------------|-----------------------------------|
| Shock | MIL-STD-883, Method 2002 Cond B |
| Solvent Resistance | MIL-STD-202, Method 215 |
| Solderability | MIL-STD-883, Method 2003 |
| MSL | Level 1 Per IPC/JEDEC J-STD 20 |
| Gross Leak Test | MIL-STD-883, Method 1014, Cond C |
| Fine Leak Test | MIL-STD-883, Method 1014, Cond A2 |
| Vibration | MIL-STD-883, Method 2007, Cond A |

Part Numbering Guide



Test Set Up



*Pin 2 is Frequency Select With Dual Frequency