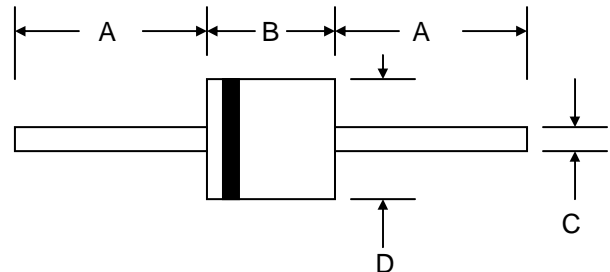


### Features

- Glass Passivated Die Construction
- 5000W Peak Pulse Power Dissipation
- 120V – 200V Standoff Voltage
- Uni- and Bi-Directional Versions Available
- Excellent Clamping Capability
- Fast Response Time
- Plastic Case Material has UL Flammability Classification Rating 94V-O



### Mechanical Data

- Case: P-600, Molded Plastic
- Terminals: Axial Leads, Solderable per MIL-STD-750, Method 2026
- Polarity: Cathode Band Except Bi-Directional
- Marking: Type Number
- Weight: 2.10 grams (approx.)
- **Lead Free: For RoHS / Lead Free Version, Add "-LF" Suffix to Part Number, See Page 5**

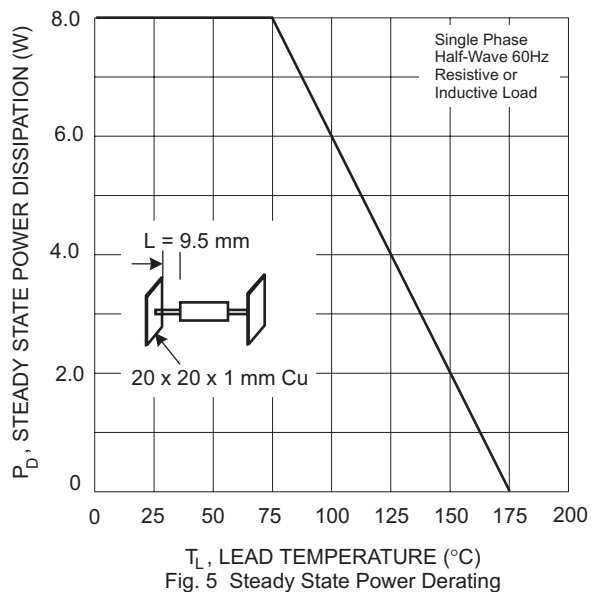
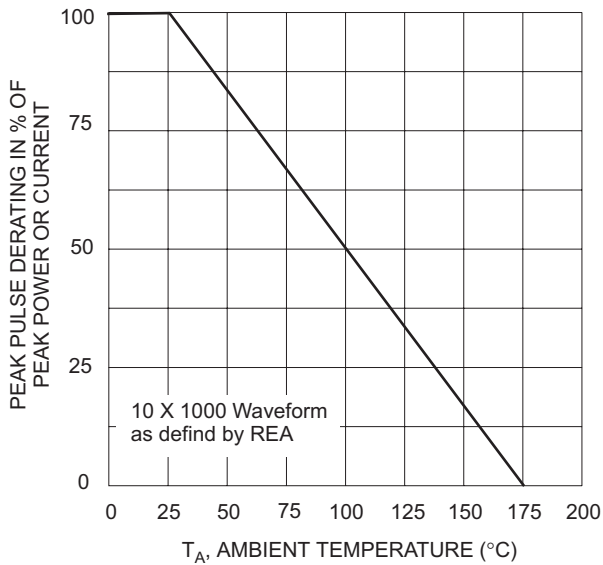
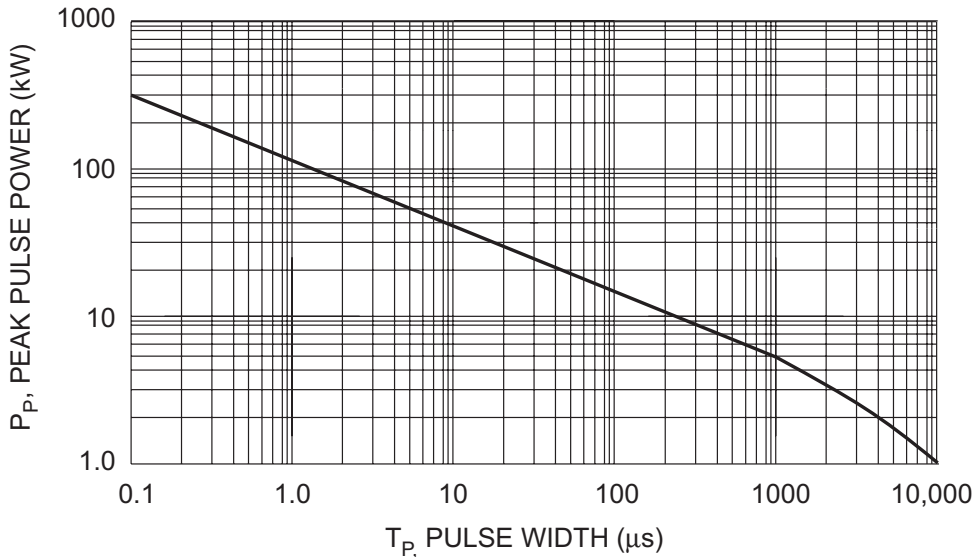
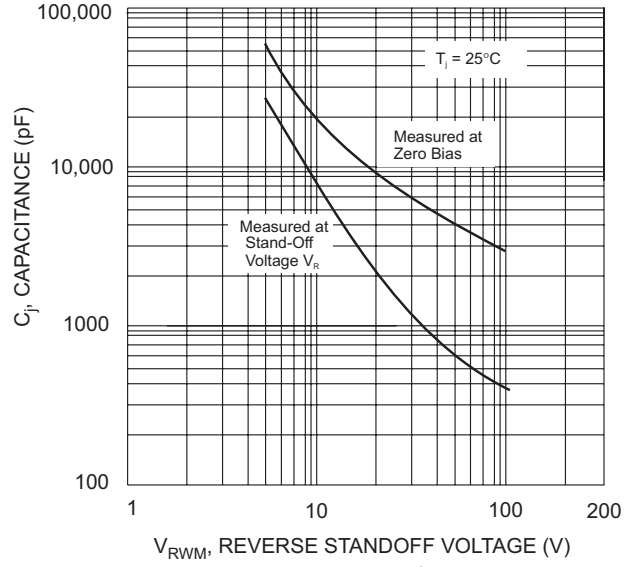
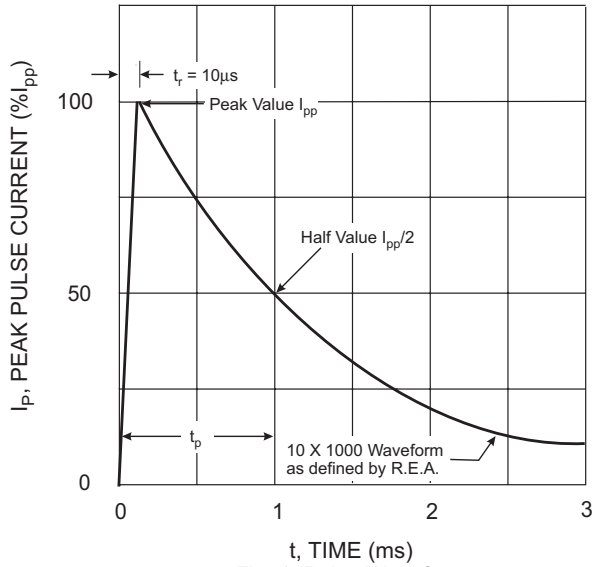
P-600		
Dim	Min	Max
A	25.4	—
B	8.60	9.10
C	1.20	1.30
D	8.60	9.10
All Dimensions in mm		

"C" Suffix Designates Bi-directional Devices  
 "A" Suffix Designates 5% Tolerance Devices  
 No Suffix Designates 10% Tolerance Devices

### Maximum Ratings and Electrical Characteristics @ $T_A=25^\circ\text{C}$ unless otherwise specified

Characteristic	Symbol	Value	Unit
Peak Pulse Power Dissipation at $T_A = 25^\circ\text{C}$ (Note 1, 2, 5) Figure 3	P PPM	5000 Minimum	W
Peak Forward Surge Current (Note 3)	IFSM	600	A
Peak Pulse Current on 10/1000 $\mu\text{s}$ Waveform (Note 1) Figure 1	IPPM	See Table 1	A
Steady State Power Dissipation (Note 2, 4)	PM(AV)	8.0	W
Typical Thermal Resistance, Junction to Lead (Note 6)	$R_{\theta JL}$	15	$^\circ\text{C/W}$
Typical Thermal Resistance, Junction to Ambient (Note 6)	$R_{\theta JA}$	65	$^\circ\text{C/W}$
Operating and Storage Temperature Range	$T_j, T_{STG}$	-55 to +175	$^\circ\text{C}$

- Note: 1. Non-repetitive current pulse per Figure 1 and derated above  $T_A = 25^\circ\text{C}$  per Figure 4.  
 2. Mounted on 20mm<sup>2</sup> copper pad.  
 3. 8.3ms single half sine-wave duty cycle = 4 pulses per minutes maximum.  
 4. Lead temperature at 75 $^\circ\text{C}$ .  
 5. Peak pulse power waveform is 10/1000 $\mu\text{s}$ .  
 6. Measured at lead length 3/8" (9.5mm) from body.



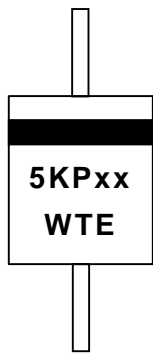
## UNI-DIRECTIONAL 5000 WATT AXIAL LEAD TVS

UNI-DIRECTIONAL PART NUMBER	REVERSE STAND-OFF VOLTAGE VRWM (V)	BREAKDOWN VOLTAGE VBR (V) MIN. @IT	BREAKDOWN VOLTAGE VBR (V) MAX. @IT	TEST CURRENT IT (mA)	MAXIMUM CLAMPING VOLTAGE @Ipp Vc (V)	PEAK PULSE CURRENT Ipp (A)	REVERSE LEAKAGE @VRWM IR (uA)
5KP120	120.00	133.00	169.00	5	214.0	23	10
5KP120A	120.00	133.00	153.00	5	193.0	20	10
5KP130	130.00	144.00	182.50	5	231.0	22	10
5KP130A	130.00	144.00	165.50	5	209.0	24	10
5KP150	150.00	167.00	211.50	5	268.0	19	10
5KP150A	150.00	167.00	192.50	5	243.0	21	10
5KP160	160.00	178.00	226.00	5	287.0	17	10
5KP160A	160.00	178.00	205.00	5	259.0	19	10
5KP170	170.00	189.00	239.50	5	304.0	16	10
5KP170A	170.00	189.00	217.50	5	275.0	18	10
5KP180	180.00	198.00	253.80	1	322.0	16	5
5KP180A	180.00	198.00	230.40	1	292.0	17	5
5KP190	190.00	209.00	267.90	1	340.0	15	5
5KP190A	190.00	209.00	243.20	1	308.0	16	5
5KP200	200.00	220.00	282.00	1	358.0	14	5
5KP200A	200.00	220.00	256.00	1	324.0	15	5

## BI-DIRECTIONAL 5000 WATT AXIAL LEAD TVS

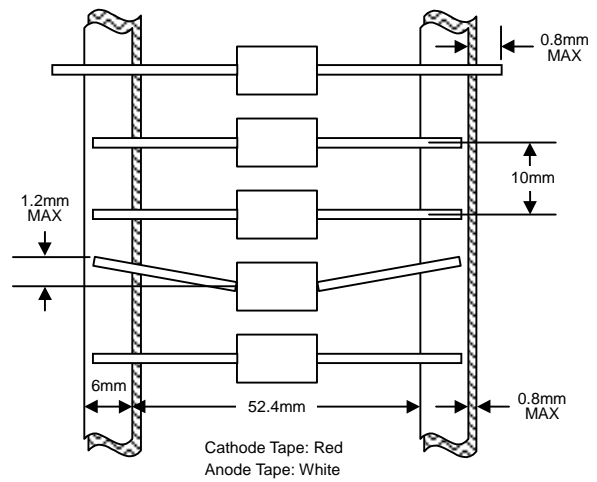
BI-DIRECTIONAL PART NUMBER	REVERSE STAND-OFF VOLTAGE VRWM (V)	BREAKDOWN VOLTAGE VBR (V) MIN. @IT	BREAKDOWN VOLTAGE VBR (V) MAX. @IT	TEST CURRENT IT (mA)	MAXIMUM CLAMPING VOLTAGE @Ipp Vc (V)	PEAK PULSE CURRENT Ipp (A)	REVERSE LEAKAGE @VRWM IR (uA)
5KP120C	120.00	133.00	169.00	5	214.0	23	10
5KP120CA	120.00	133.00	153.00	5	193.0	20	10
5KP130C	130.00	144.00	182.50	5	231.0	22	10
5KP130CA	130.00	144.00	165.50	5	209.0	24	10
5KP150C	150.00	167.00	211.50	5	268.0	19	10
5KP150CA	150.00	167.00	192.50	5	243.0	21	10
5KP160C	160.00	178.00	226.00	5	287.0	17	10
5KP160CA	160.00	178.00	205.00	5	259.0	19	10
5KP170C	170.00	189.00	239.50	5	304.0	16	10
5KP170CA	170.00	189.00	217.50	5	275.0	18	10
5KP180C	180.00	198.00	253.80	1	322.0	16	5
5KP180CA	180.00	198.00	230.40	1	292.0	17	5
5KP190C	190.00	209.00	267.90	1	340.0	15	5
5KP190CA	190.00	209.00	243.20	1	308.0	16	5
5KP200C	200.00	220.00	282.00	1	358.0	14	5
5KP200CA	200.00	220.00	256.00	1	324.0	15	5

## MARKING INFORMATION



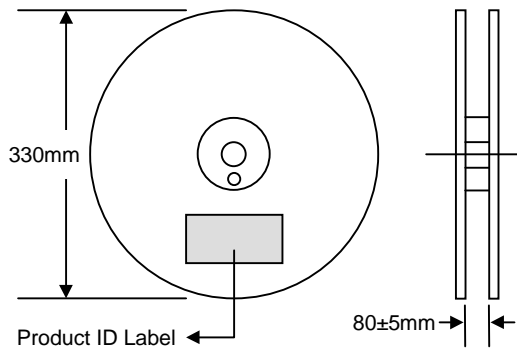
Cathode = Polarity Band Except Bi-Directional Types  
 5KPxx = Device Number  
 WTE = Manufacturer's Logo

## TAPING SPECIFICATIONS

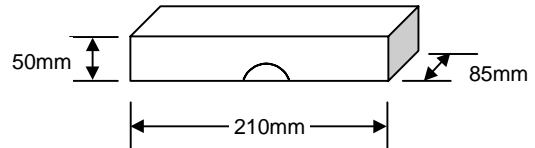


## PACKAGING INFORMATION

### TAPE & REEL



### BULK



Packaging	Reel Diameter / Box Size (mm)	Quantity (PCS)	Carton Size (mm)	Quantity (PCS)	Approx. Gross Weight (KG)
<b>TAPE &amp; REEL</b>	330	800	370 x 370 x 420	4,000	12.0
<b>BULK</b>	210 x 85 x 50	250	500 x 255 x 275	7,000	17.0

**Note:** 1. Paper reel, white or gray color. Core material: plastic or metal.  
 2. Components are packed in accordance with EIA standard RS-296-E.

## ORDERING INFORMATION

Product No.	Package Type	Shipping Quantity
<b>5KPxx-T3</b>	P-600	800/Tape & Reel
5KPxx	P-600	250 Units/Box

1. Products listed in **bold** are WTE **Preferred** devices.
2. Shipping quantity given is for minimum packing quantity only. For minimum order quantity, please consult the Sales Department.
3. **To order RoHS / Lead Free version, add "-LF" suffix to part number above. For example, 5KP120-T3-LF.**

Won-Top Electronics Co., Ltd (WTE) has checked all information carefully and believes it to be correct and accurate. However, WTE cannot assume any responsibility for inaccuracies. Furthermore, this information does not give the purchaser of semiconductor devices any license under patent rights to manufacturer. WTE reserves the right to change any or all information herein without further notice.

**WARNING:** DO NOT USE IN LIFE SUPPORT EQUIPMENT. WTE power semiconductor products are not authorized for use as critical components in life support devices or systems without the express written approval.

**Won-Top Electronics Co., Ltd.**

No. 44 Yu Kang North 3rd Road, Chine Chen Dist., Kaohsiung, Taiwan

**Phone:** 886-7-822-5408 or 886-7-822-5410

**Fax:** 886-7-822-5417

**Email:** sales@wontop.com

**Internet:** <http://www.wontop.com>

*We power your everyday.*