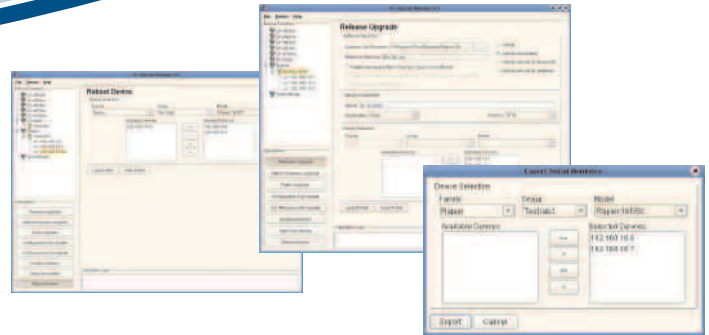


# ALLIEDVIEW™-UM

## Network Device Management Software



### AlliedView-UM 2.0

Software distribution tool for Allied Telesis devices

#### Overview

AlliedView-UM is a Java-based application that allows for fast and efficient distribution of software releases and patches for Allied Telesis devices. It automates the process of loading and activating software releases - both major and interim - and patches over multiple devices. It does this by allowing associated devices to be grouped together and after being supplied with the necessary license keys generated from WebGen, automatically applies the license keys to the grouped devices.

#### Ease of Use

Manage and maintain all your network devices - no matter how many - easily and quickly through AlliedView-UM's intuitive graphical user interface. You can install software releases, patches, interim releases, GUI resource files, and system help files, enable features, and modify device configuration over multiple devices. You can do all these conveniently using this user-friendly tool from Allied Telesis.

#### Reduced Process Time

Significantly cut down the time it takes to upgrade the software on multiple devices. AlliedView-UM automates the upgrade process by removing the need to manually go through all the commands and procedures for each and every one of your devices. This tool establishes a telnet management session with the device and issues the required commands depending on the operation selected by the user.

#### One Upgrade Tool For All Your Devices

Dealing with one or two devices is no big deal. On the other hand, dealing with tens, hundreds or even thousands of them can be. Managing and installing software releases has never been simpler with this one upgrade tool that works for all your devices. With AlliedView-UM, you don't even need to move away from your workstation. Upgrade the software on your devices with just a mouse click - and get them all to work.

#### Key Features

- Intuitive graphical interface
- Software release upgrades over multiple devices
- Patch application over multiple devices
- Interim release upgrades over multiple devices
- Configuration file update over multiple devices
- GUI resource file update over multiple devices
- System help file update over multiple devices
- Enabling of features on multiple devices
- Audit trail
- Operation rollback
- Operation scheduling
- Serial number and model information retrieval
- Serial number export ability
- Multiple-device reboot
- Support for Allied Telesis devices

## SUPPORTED DEVICES

### Routers

Product Name	Software Version
AT-AR300	Rel 2.2.2, Rel 2.3.1 or later
AT-AR300L	Rel 2.2.2, Rel 2.3.1 or later
AT-AR320	Rel 2.2.2, Rel 2.3.1 or later
AT-AR330	Rel 2.2.2, Rel 2.3.1 or later
AT-AR350	Rel 2.2.2, Rel 2.3.1 or later
AT-AR370(S)	Rel 2.2.2, Rel 2.3.1 or later
AT-AR370(U)	Rel 2.2.2, Rel 2.3.1 or later
AT-AR390	Rel 2.2.2, Rel 2.3.1 or later
AT-AR395	Rel 2.2.2, Rel 2.3.1 or later
AT-AR410	Rel 2.3.2 or later
AT-AR415S	Rel 2.8.1 or later
AT-AR440S	Rel 2.6.6 or later
AT-AR441S	Rel 2.7.1 or later
AT-AR442S	Rel 2.7.6A or later
AT-AR450S	Rel 2.5.2 or later
AT-AR720	Rel 2.4.1 or later
AT-AR725	Rel 2.4.1 or later
AT-AR740	Rel 2.4.1 or later
AT-AR745	Rel 2.4.1 or later
AT-AR750S	Rel 2.7.1b or later
AT-AR770S	Rel 2.8.1 or later

### Layer 2 Switches

Product Name	Software Version
AT-8000/8POE	AT-s81 v1.0.0 or later
AT-8000GS/24	AT-S95 v1.0.1 or later
AT-8000GS/24POE	AT-S95 v1.0.1 or later
AT-8000GS/48	AT-S95 v1.0.1 or later
AT-8000S/16	Rel 1.0.0.19 or later
AT-8000S/24	Rel 1.0.0.19 or later
AT-8000S/24POE	Rel 1.0.0.19 or later
AT-8000S/48	Rel 1.0.0.19 or later
AT-8000S/48POE	Rel 1.0.0.19 or later
AT-8012M	AT-s39 v3.2.0 or later
AT-8012M-QS	AT-s39 v3.3.0 or later
AT-8016F/MT	AT-s39 v3.2.0 or later
AT-8016F/SC	AT-s39 v3.2.0 or later
AT-8016F/ST	AT-s39 v3.3.0 or later
AT-8024	AT-s39 v3.2.0 or later
AT-8024GB	AT-s39 v3.2.0 or later
AT-8024M	AT-s39 v3.2.0 or later
AT-8026FC	AT-s39 v3.2.0 or later
AT-8026T	AT-s39 v3.2.0 or later
AT-8088/MT	AT-s39 v3.2.0 or later
AT-8088/SC	AT-s39 v3.2.0 or later
AT-8326GB	AT-s41 v1.0.2 or later
AT-8350GB	AT-s41 v1.0.2 or later
AT-8400	AT-s60 v2.0.0 NE or later
AT-9000/24	AT-s84 v1.0.0 or later
AT-9410GB	AT-s45 v1.0.2 or later

### Layer 2+

Product Name	Software Version
AT-8516F/SC	AT-s62 v1.2.1 NE or later
AT-8524M	AT-s62 v1.1.0 NE or later
AT-8524POE	AT-s62 v1.2.1 NE or later
AT-8550GB	AT-s62 v1.2.1 NE or later

AT-8550SP	AT-s62 v1.2.1 NE or later
AT-8724XL	Rel 2.5.1 or later
AT-8748XL	Rel 2.5.1 or later
AT-9000/24	AT-s84 v1.0.0 or later
AT-9408LC/SP	AT-s63 v1.1.0 NE or later
AT-9424T/GB	AT-s63 v1.0.0 NE or later
AT-9424T/SP	AT-s63 v1.0.0 NE or later

### Layer 3 Switches

Product Name	Software Version
AT-8624POE	Rel 2.7.4 or later
AT-8624T/2M	Rel 2.6.4 or later
AT-8648T/2SP	Rel 2.7.6 or later
AT-8824	Rel 2.6.1 or later
AT-8848	Rel 2.6.1 or later
AT-9424T	AT-S63 v3.2.0 NE or later
AT-9424T/POE	AT-S63 v3.2.0 NE or later
AT-9424Ts	AT-S63 v2.0.0 or later
AT-9424Ts/XP	AT-S63 v2.0.0 or later
AT-9448T/SP	AT-S63 v2.0.0 or later
AT-9448Ts/XP	AT-S63 v1.3.0 or later
Rapier 16F/MT	Rel 2.6.4 or later
Rapier 16F/SC	Rel 2.6.4 or later
Rapier 16Fi/MT	Rel 2.2.2 or later
Rapier 16Fi/SC	Rel 2.2.2 or later
Rapier 24	Rel 2.6.4 or later
Rapier 24i	Rel 2.2.2 or later
Rapier 48	Rel 2.6.4 or later
Rapier 48i	Rel 2.2.2 or later
Rapier 48w	Rel 2.9.1-04 or later
Rapier G6	Rel 2.6.4 or later
Rapier G6FLX/SC	Rel 2.6.4 or later
Rapier G6FSX/MT	Rel 2.6.4 or later
Rapier G6FSX/SC	Rel 2.6.4 or later

### Layer 3+ Switches

Product Name	Software Version
AT-8948	Rel 2.6.2 or later
AT-9724TS	Rel 2.03 or later
AT-9748TS/XP	Rel 2.03 or later
AT-9924SP	Rel 2.6.6 or later
AT-9924T	Rel 2.6.6 or later
AT-9924T/4SP	Rel 2.6.6 or later
AT-9924Ts	Rel 3.0.2 or later
AT-SBx908	Rel 5.2.1 or later
AT-x600-24Ts	Rel 5.2.2 or later
AT-x600-24Ts/XP	Rel 5.2.2 or later
AT-x900-12XT/S	Rel 5.2.1 or later
AT-x900-24XS	Rel 3.1.1-03 or later (AlliedWare)
AT-x900-24XS	Rel 5.2.1 or later (AlliedWare Plus)
AT-x900-24XT	Rel 3.1.1-03 or later (AlliedWare)
AT-x900-24XT	Rel 5.2.1 or later (AlliedWare Plus)
AT-x900-24XT-N	Rel 3.1.1-03 or later (AlliedWare)
AT-x900-24XT-N	Rel 5.2.1 or later (AlliedWare Plus)
AT-x900-48FE	Rel 2.8.1 or later
AT-x900-48FS	Rel 2.9.1-11 or later

### Layer 3/4+ Switches

Product Name	Software Version
AT-9812T	Rel 2.4.2 or later
AT-9816GB	Rel 2.4.2 or later

### Layer 4+ Switches

Product Name	Software Version
AT-SB4004	Rel 2.4.2 or later
AT-SB4008	Rel 2.4.2 or later

## SYSTEM REQUIREMENTS

### Hardware

Windows 2000, Windows XP, Windows 2003

64MB RAM (128MB+ recommended)  
100MB disk space (during installation)  
50MB disk space (during operation)  
166MHz Pentium-compatible processor

Sun OS 5.8/Solaris 8 (32-bit version)

128MB RAM (256MB+ recommended)  
120MB disk space (during installation)  
60MB disk space (during operation)  
SPARC station 20 or UltraSparc series

HP-UX 11 (32-bit version)

128MB RAM (256MB+ recommended)  
210MB disk space (during installation)  
105MB disk space (during operation)  
HP 9000 Workstation or HP Visualize Workstation

### Display

1024 x 768 with 16-bit colour depth

## Ordering Information

### AT-ALLIEDVIEW-UMV2

AlliedView-UM version 2.0

USA Headquarters | 19800 North Creek Parkway | Suite 100 | Bothell | WA 98011 | USA | T: +1 800 424 4284 | F: +1 425 481 3895

European Headquarters | Via Motta 24 | 6830 Chiasso | Switzerland | T: +41 91 69769.00 | F: +41 91 69769.11

Asia-Pacific Headquarters | 11 Tai Seng Link | Singapore | 534182 | T: +65 6383 3832 | F: +65 6383 3830

[www.alliedtelesis.com](http://www.alliedtelesis.com)

© 2008 AlliedTelesis Inc. All rights reserved. Information in this document is subject to change without notice. All company names, logos, and product designs that are trademarks or registered trademarks are the property of their respective owners.

617-00530 Rev 1