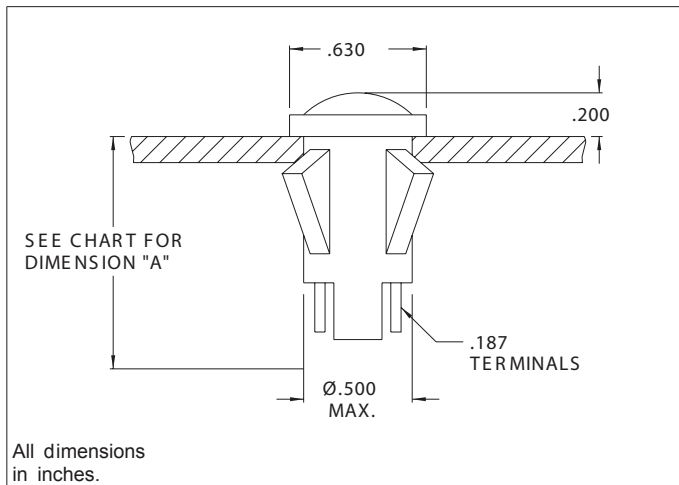


## 1030QD, 1031QD, 1032QD and 1033QD Series Non-Relampable Neon Indicator Lights

### Description and Features



**Mounting:** Will snap-fit into Ø.500/.505 hole in panels .020/.100 thick. Push-on speednut SN0461 also available. Mounting hole pattern on page SP2.

**Terminals:** Quick-connect, tinned brass

**Lens:** Polycarbonate

**Bezel:** Polished stainless steel. For black finish add "X" after the series letter(s).

**Housing:** White Nylon

Lens Color	Neon	
	Model No. (105-125VAC)	Model No. (208-250VAC)
Red	1030QD1	1031QD1
Amber	1030QD3	1031QD3
White	1030QD4	1031QD4
Green	1032QD5*	1033QD5*
Lamp used	C2A+Resistor	

\* Incorporates G2B lamp and resistor.  
Underwriters Laboratories (UL) File No. E20325  
Canadian Standards Association (CSA) File No. LR13346