

Matrox **Mura™** MPX Series



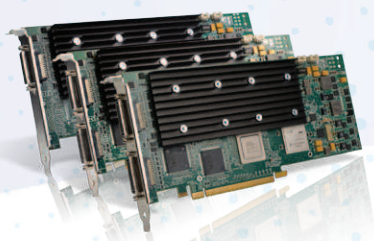
Matrox Mura MPX Video Wall Solutions
Meet Your Project Requirements

Building a Video Wall? It's Easier Than You Think.

Building a video wall doesn't need to be an expensive or complex process—in fact, it's easy when using Matrox Mura MPX Series video wall controller boards. The Mura MPX Series allows you to configure a video wall with off-the-shelf components and control it with user-friendly software. Simply choose the boards you need from a complete hardware line-up and then select one or more software control options.

Mura MPX Series Features	Benefits
Integrated Inputs and Outputs	<ul style="list-style-type: none"> Start building video walls with just one board, with up to four universal inputs and four full HD outputs on a single slot add-in card Leverage load balancing and bandwidth preservation for large-scale, multi-channel projects
PCIe x16 Gen2 Bus Interface	<ul style="list-style-type: none"> Unparalleled performance with 16 lanes available for duplex, peer-to-peer data transfer on Mura MPX-4/4, MPX-4/2, and MPX-4/0 boards
Universal Input Capture	<ul style="list-style-type: none"> Capture DVI, RGB, Component, S-Video and Composite video on the same board Separate boards are available to capture SDI feeds Dedicated NTSC/PAL/SECAM capture boards support 8 or 16 channels each
HDCP Compliance	<ul style="list-style-type: none"> Capture and scale HDCP content from sources such as external Blu-ray™ players, set-top boxes, and video game consoles
Many Video Wall Management Options	<ul style="list-style-type: none"> Complete control from computer consoles, tablet devices, and AMX® or Crestron® touch panels
Scalability	<ul style="list-style-type: none"> Create high density, low footprint video wall controllers with up to 56 HD inputs and 56 HD outputs
Bezel Management	<ul style="list-style-type: none"> Compensate for display bezels for more realistic video presentation across multiple screens
Edge Overlap	<ul style="list-style-type: none"> Simplify multi-projector edge blending by adjusting the number of overlapping pixels between edge blending projectors to create seamless, unified images
Hardware Genlock	<ul style="list-style-type: none"> Synchronization of multiple outputs provides tear-free display of captured video sources across multiple displays
Microsoft® Windows® Environment	<ul style="list-style-type: none"> Access a Windows desktop to run local applications
Passive Cooling	<ul style="list-style-type: none"> Increased longevity and reliability

Universal Output/Input Boards



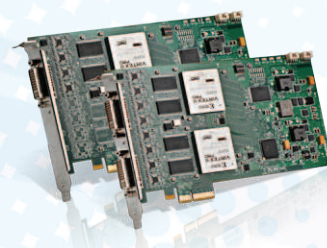
Matrox Mura MPX-4/4, MPX-4/2, MPX-4/0

SDI Input/DVI Output Board



Matrox Mura MPX-SDI

Analog Video Input Boards



Matrox Mura MPX-V8, MPX-V16

Many Software Options to Manage Your Video Wall.

Matrox MuraControl™

Matrox MuraControl video wall management software provides an easy and intuitive way to manage your Mura MPX-powered video wall locally or remotely. Available as a feature rich, single-license software for Windows or as a free, lighter version app for iPad® with drag & drop functionality—you can use it to create and manage layouts offline or in real time.

Key Features (MuraControl for Windows):

- Position, scale, clone, crop, frame, and label input windows
- Lock a layout to prevent accidental changes
- Rename, crop, and rotate (90°, 180°, and 270°) source content
- Create custom gridlines and control window snap behaviour
- Apply color, text overlay, and deinterlacing filters
- Adjust window z-order and create picture-in-picture configurations

	MuraControl for Windows	MuraControl for iPad
Supported OS	Windows XP, Windows 7, Windows Server® 2008 R2	iOS 5 and up
Video Wall Controller Requirements	<ul style="list-style-type: none"> • Mura MPX Video Wall Controller Cards • Matrox Mura Network API • Mura MPX Driver version 2.02 or later 	<ul style="list-style-type: none"> • Mura MPX Video Wall Controller Cards • Matrox Mura Network API • Mura MPX Driver version 2.01 or later
Getting Started	<ul style="list-style-type: none"> • Free trial software available from Matrox (USB software license available for purchase) 	<ul style="list-style-type: none"> • Free app available on the Apple® App StoreSM

AMX and Crestron Integration

Easily integrate customized AMX and Crestron touch panel control for Mura MPX-based video walls with free modules to get you started.

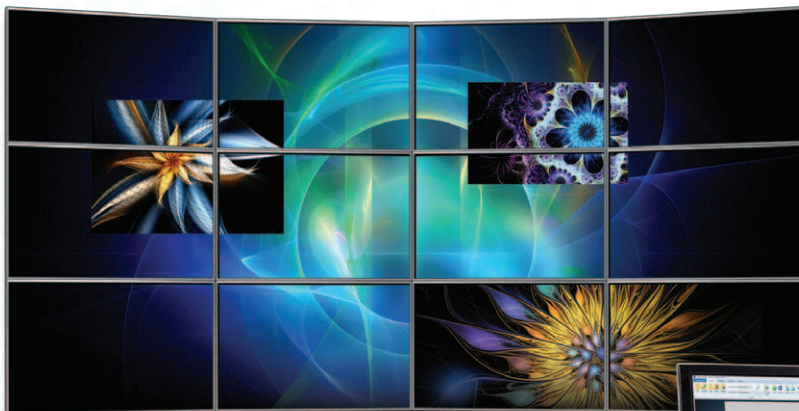
- Mura AMX Duet module: Developed and maintained by Matrox, this module is available on the Matrox website and facilitates integration with NetLinx® Integrated Controller Systems
- Mura Crestron module: Realized through Matrox membership in the Crestron Integrated Partner Program, this module (available from Crestron) helps integrators link Crestron Control Systems to Mura-based video walls

Matrox Mura Network API

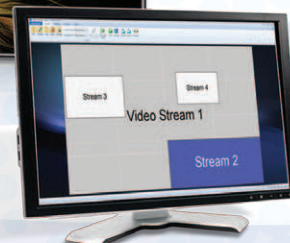
Develop your own custom control application to meet individual project specifications with Matrox's robust and easy-to-use Telnet-based Mura MPX Network API over Ethernet or RS-232. Clear documentation and .net sample code are available to kick-start custom control software development or modify existing control software to access the Mura MPX Series' high-end feature set.

OEM Partner Program

As part of the Matrox OEM Partner Program, qualified OEMs can develop their own control application using the comprehensive Mura SDK. Contact Matrox for details.



Control of your video wall is at your fingertips.



Matrox Mura MPX Series – Essential Building Blocks for Your Video Wall

	Universal Output/Input Boards			SDI Input/DVI Output Board	Video Input Boards	
	Mura MPX-4/4	Mura MPX-4/2	Mura MPX-4/0	Mura MPX-SDI	Mura MPX-V8	Mura MPX-V16
Part Number	MURA-MPX44HF	MURA-MPX42HF	MURA-MPX40HF	MURA-MPXSDIF	MURA-MPXV8F	MURA-MPXV16F
Board Type	4 outputs, 4 inputs	4 outputs, 2 inputs	4 outputs	2x DVI outputs, 2x 3G-SDI inputs	8 inputs	16 inputs
Bus Interface	PCIe x16 (Gen2)			PCIe x16 (Gen1)	PCIe x4 (Gen1)	
Memory	2GB ¹			1GB ¹	128 MB ²	256 MB ²
Data Transfer Rate	64 Gbit/sec			32 Gbit/sec	8 Gbit/sec	
Output Resolutions³ - SL-DVI - RGB (VGA)	2048x1152 2048x1536			2048x1152 2048x1536	— —	
Input Resolutions^{3, 4} - SL-DVI - RGB (VGA) - Component (YPbPr) - S-Video - Composite - SDI	1920x1200 2048x1536 ⁵ 1080i NTSC/PAL/SECAM NTSC/PAL/SECAM —	— — — — — —	— — — — — —	— — — — — 1920x1080	— — — NTSC/PAL/SECAM NTSC/PAL/SECAM —	
Supported SDI Formats	—			3G SDI (SMPTE 424M, SMPTE 425M Level A), HD SDI (SMPTE 292M, SMPTE 296M), SD SDI (SMPTE 259M)	—	
Power Consumption	Typical: 37W @ 12V, 0.5W @ 3.3V or 37.5W Total		Typical: 36W @ 12V, 0.5W @ 3.3V or 36.5W Total	Typical: 20W @ 12V, 0.03W @ 3.3V or 20.03W Total	Typical: 10W @ 12V	Typical: 17W @ 12V
Regulatory Certifications	FCC Class A, CE Class A, ACMA Class A, VCCI Class A, KCC, ICES - 003 Class A, CSA					
Environmental Certifications	EU RoHS, China RoHS, REACH					
Dimensions (LxH)	9.5 x 4.407 inches ⁶ / 9.5 x 3.905 inches ⁷			6.6 x 4.407 inches ⁶ / 6.6 x 3.905 inches ⁷	8.1 x 4.376 inches ⁶ / 8.1 x 3.874 inches ⁷	
Weight	298g	294g	290g	236g	158g	184g
Operating Conditions	Temperature: 0 to 35 degrees Celsius Humidity: 20% to 80% non-condensing Altitude: from 650 hPa (3580m) to 1013 hPa (0m)					
Non-operating/ Storage Conditions	Temperature: -40 to 65 degrees Celsius Humidity: 10% to 90% non-condensing Altitude: from 192 hPa (12000m) to 1020 hPa (-50m)					
OS Support	Microsoft Windows 7 Professional (64 bit), Windows Server 2008 R2 (64 bit)					
Warranty	3 years					

1. Shared memory for inputs and outputs. 2. Input memory. 3. Maximum resolutions listed above. Support for standard and custom resolutions available. For specific requirements contact Matrox. 4. RGB (VGA) adapter included with Mura MPX-4/4, Mura MPX-4/2 and Mura MPX-4/0. Matrox adapters sold separately for component, S-Video, and composite. Contact Matrox for details. 5. Refresh rate of 47Hz. 6. Including gold-fingers; not including bracket and connectors. 7. Not including gold-fingers.

www.matrox.com/graphics

North America Corporate Headquarters: 1 800-361-1408 or 514-822-6000
United Kingdom: +44 (0) 1895 827260
Deutschland: +49 89 62170-444
Email: graphics@matrox.com

© 2013 Matrox Graphics Inc. All rights reserved. Matrox reserves the right to change specifications without notice. Matrox and Matrox product names are registered trademarks in Canada and other countries and/or trademarks of Matrox Electronic Systems, Ltd. and/or Matrox Graphics Inc. Blu-ray is a trademark of the Blu-ray Disc Association. Microsoft, Windows, and Windows Server are registered trademarks of Microsoft Corporation in the United States and other countries. Apple, App Store and iPad are trademarks or service marks of Apple Inc. All other company and product names are registered trademarks and/or trademarks of their respective owners.
February 2013

matrox[®]
Graphics for Professionals