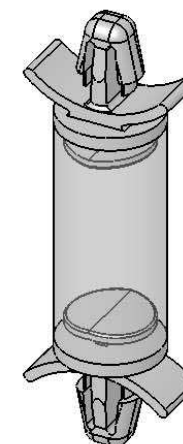


SECTION A-A

TO SNAP LOCK IN A .187±.003
[4.75±0.08] DIA. HOLE WITH A PANEL
THICKNESS OF .031-.078 [0.79-1.98]
(BOTH ENDS)





| PART NO. | "A" ±.03 [0.8] UNCOMPRESSED | "B" REF | TARGET LOAD |
|----------|--------------------------------|-------------|----------------|
| HSCBS-1 | .59 [14.9] | .38 [9.7] | 2.2 LBF [9.8N] |
| HSCBS-2 | .83 [21.0] | .62 [16.3] | |
| HSCBS-3 | 1.07 [27.1] | .87 [22.0] | |
| HSCBS-4 | 1.31 [33.2] | 1.10 [28.0] | |

NOTES:

1. MOUNT MATERIAL: FLAME RETARDANT NYLON 6/6 (RMS-169)
COLOR: NATURAL
2. DAMPER MATERIAL: THERMOPLASTIC ELASTOMER (RMS-168)
HARDNESS: 45A
COLOR: BLACK

| REV. | DESCRIPTION | ENGR. | DATE |
|------|---|-------|----------|
| C | "A" DIMS REVISED, SEE ECN #1000 FOR CHANGES | SK | 05/09/05 |
| B | SEE ECN #934 FOR CHANGES | SK | 02/04/05 |
| A | RELEASED FOR PRODUCTION | SM | 12/01/04 |

| | | | | | | | |
|---|------------------|---------------|--|----------|---|----------------|---|
| TITLE: HIGH SHOCK CIRCUIT BOARD SUPPORT | | | | |  | DWG IN IN [MM] |  |
| CREATED USING SOLIDWORKS | FILE #: HSCBS | | DWN: SM | APP: DJZ | FINAL | | |
| TOLERANCES UNLESS NOTED .XX=±.010 .XXX=±.005 FRAC.=±1/64 ANG.=±1° | SHEET: 1 OF 1 | SHEET SIZE: A | DT: 09/09/04 | CHKD: SJ | PART # | PRINT TYPE | |
| | RE: RICHCO, INC. | | RICHCO, INC. ENG@RICHCO-INC.COM (773) 539-4060 | | SEE TABLE | CA | |