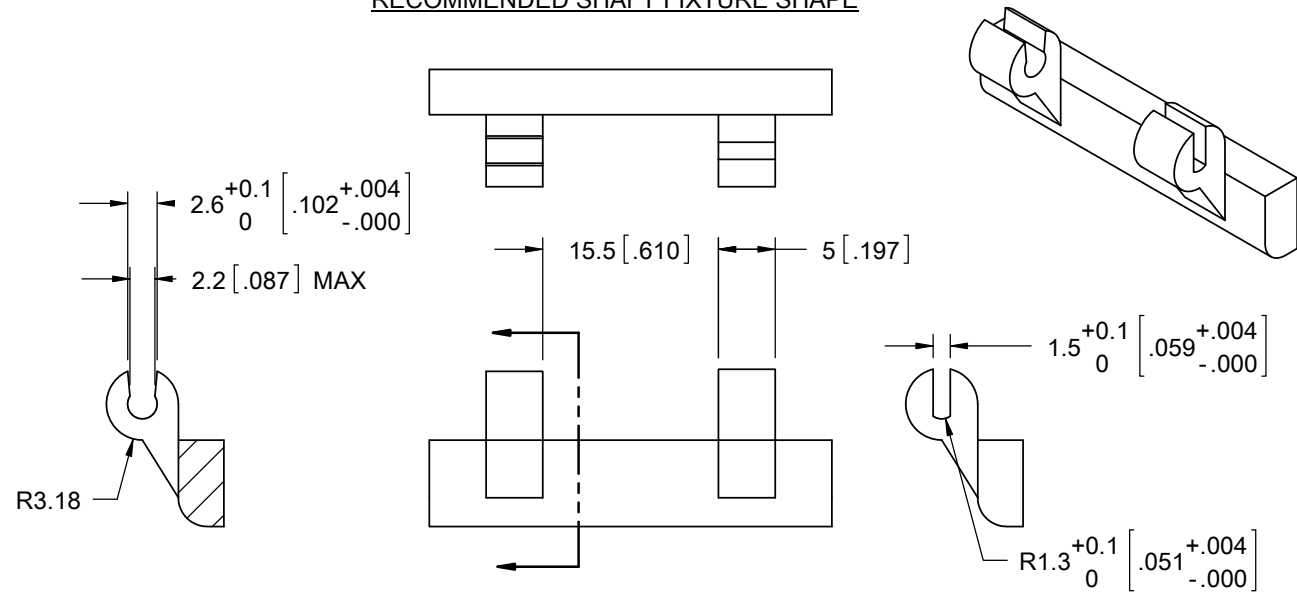
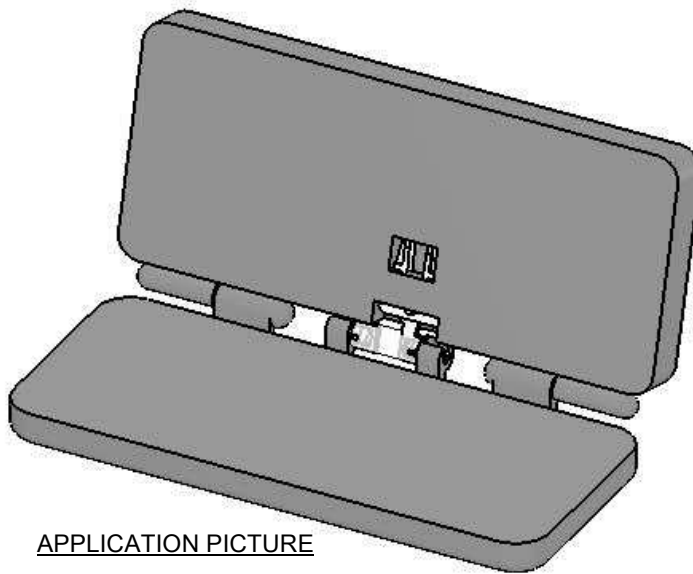
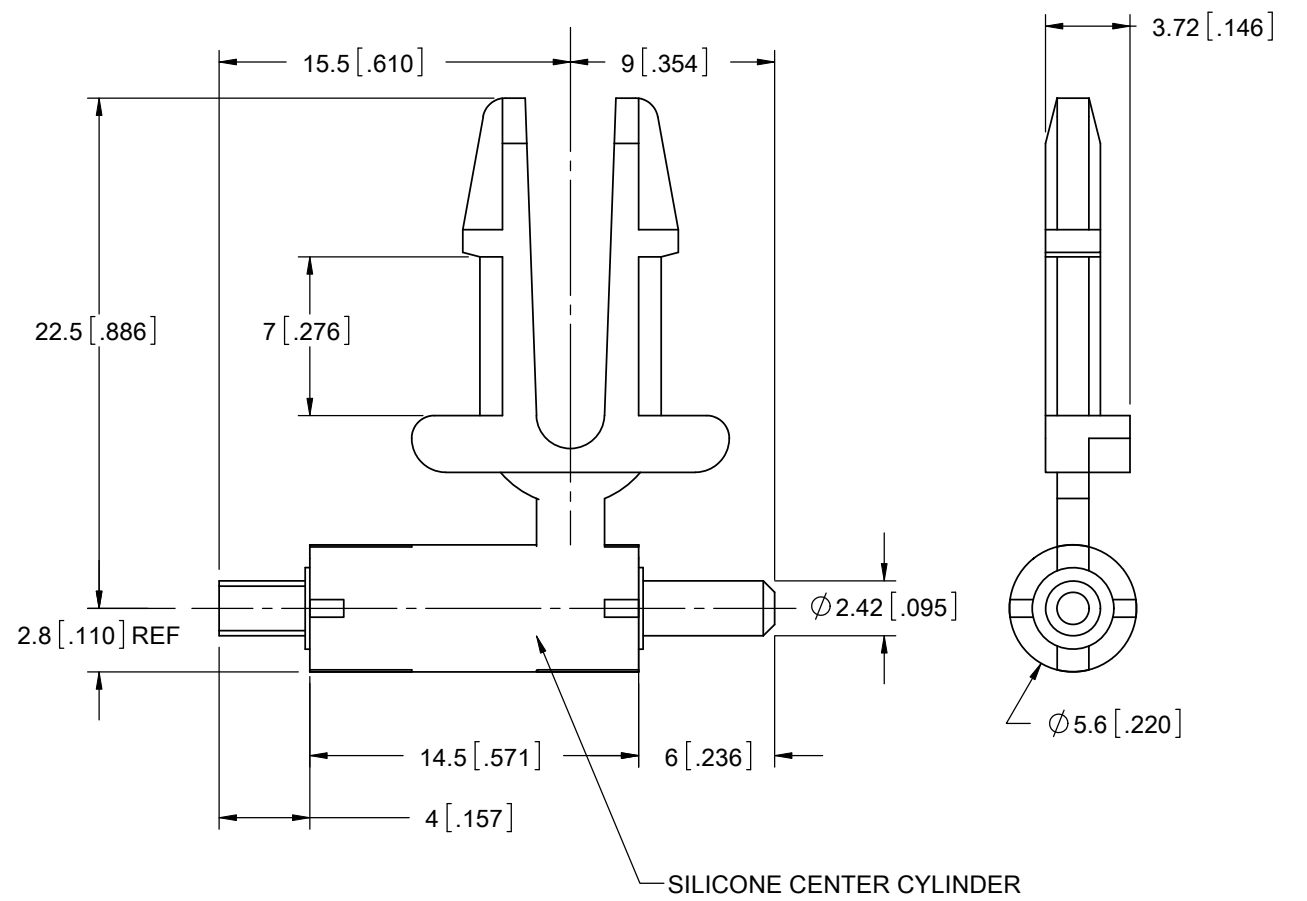
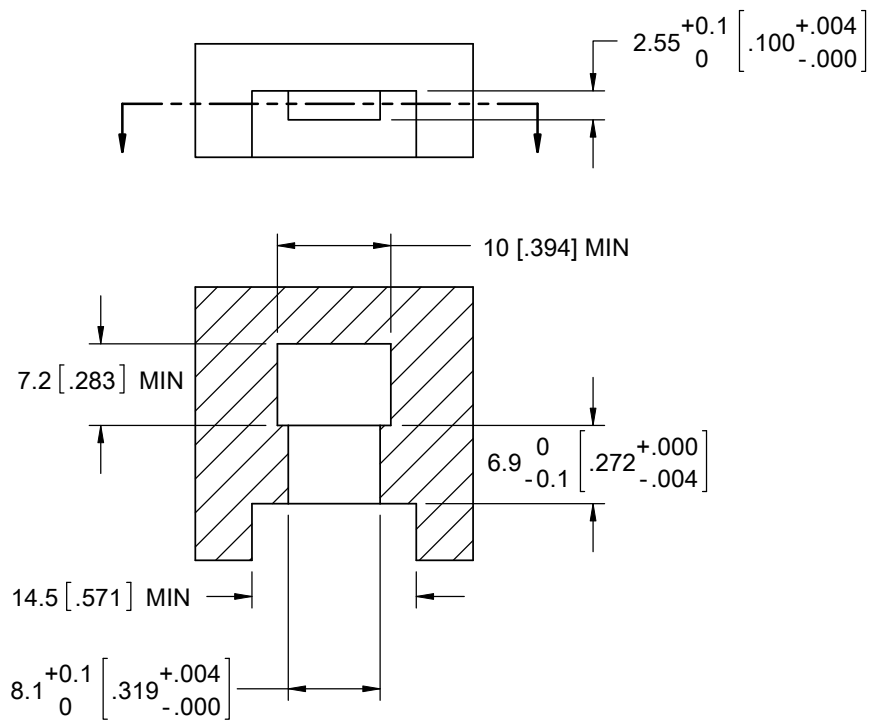


RECOMMENDED SHAFT FIXTURE SHAPE



RECOMMENDED HOLE SHAPE



APPLICATION PICTURE

- NOTES:**
1. MATERIAL:
THERMOPLASTIC: NYLON 6/6 UL94 V-2 (RMS-406) AND
CENTER CYLINDER: LIQUID SILICONE RUBBER (RMS-407)
 2. COLOR: BLACK PLASTIC AND NATURAL (TRANSLUCENT) ELASTOMER
 3. DURABILITY: 50,000 CYCLES FROM 0° to 120°
 4. TORQUE: 0.4 (gf*cm)/°
 5. MAX. REVOLUTION ± 180°
 6. PATENT PENDING

A	RELEASED FOR PRODUCTION	S.J.	07.10.09
REV.	DESCRIPTION	ENGR.	DATE

TITLE: AXIS SPRING				DWG IN IN [MM]		FINAL	
CREATED USING SOLIDWORKS	FILE #: AS-1	DWN: A.N.	APP: D.J.Z.	PART #			
TOLERANCES UNLESS NOTED 0-10±0.1 10.01-30±0.3 30.01-50±0.5 ANG.=±1°	SHEET: 1 OF 1	SHEET SIZE: B	DT: 09.29.2008	CHKD: S.J.	PART #		PRINT TYPE
RE: RICHCO INC.		RICHCO, INC. ENG@RICHCO-INC.COM (773) 539-4060		AS-1		CA	