

**Overview**

The BM11 series high torque stepper motors have a 1.8° step angle, NEMA11 dimensions and are available in single or dual shaft versions. They feature 4 leads but can be provided also with 6 or 8 leads upon request. Custom lead length adaptation is available.



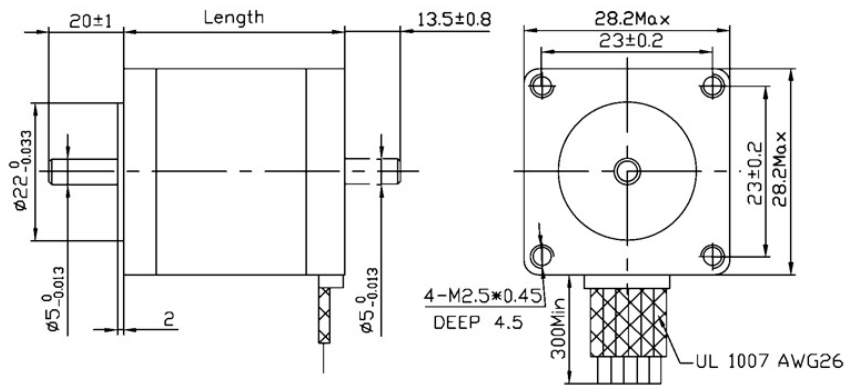
The dual shaft motors are optionally available with a differential encoder.

**Specifications**

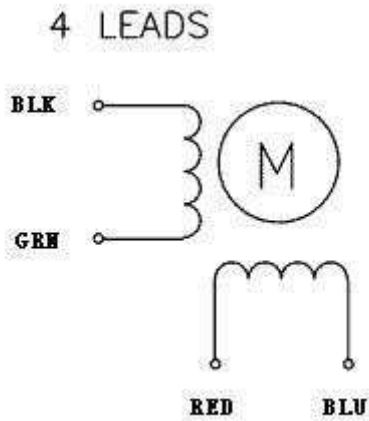
Model Number		Current / Phase	Resistance / Phase	Inductance / Phase	Holding Torque	Rotor Inertia	Weight	Length
Single Shaft	Dual Shaft	A	Ω	mH	g-cm (oz-in)	g-cm <sup>2</sup>	kg	mm
BM11-8-S	BM11-8-D	0.67	5.6	4.2	576 (8)	9	0.11	31.5
BM11-13-S	BM11-13-D	0.67	6.8	4.9	936 (13)	12	0.14	44.5
BM11-16-S	BM11-16-D	0.67	9.2	7.2	1152 (16)	18	0.20	50.5

Step Angle	1.8°
Step Angle Accuracy	±5% (full step, no load)
Resistance Accuracy	±10%
Inductance Accuracy	±20%
Temperature Rise	80°C max. (rated current, both phases on)
Ambient Temperature	-20°C ~ +50°C
Insulation Resistance	100MΩ min., 500VDC
Dielectric Strength	500VAC for one minute
Shaft Radial Play	0.02 max. (450 g load)
Shaft Axial Play	0.08 max. (450g load)
Max. Radial Force	28N (20mm from the flange)
Max. Axial Force	10N
Direction of Rotation	CW (when viewing from the front flange)

**Dimensions in mm**



**Connection**



**Torque Speed Curves**

