



UT4406

Power MOSFET

N-CHANNEL ENHANCEMENT MODE

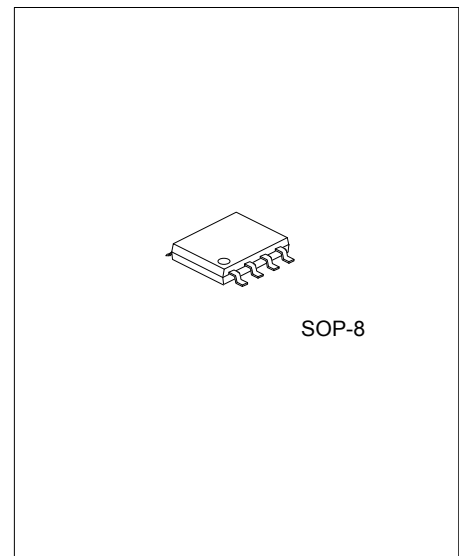
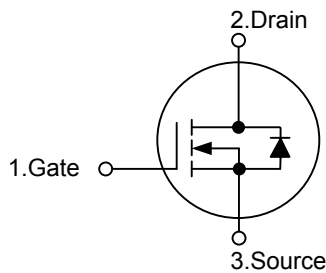
DESCRIPTION

The **UT4406** can provide excellent $R_{DS(ON)}$, low gate charge and operation with gate voltages as low as 2.5V by using UTC's advanced trench technology which makes an excellent high side switch for notebook CPU core DC-DC conversion.

FEATURES

- * $R_{DS(ON)} < 14m\Omega @V_{GS} = 10 V$
- $R_{DS(ON)} < 16.5m\Omega @V_{GS} = 4.5 V$
- $R_{DS(ON)} < 26m\Omega @V_{GS} = 2.5 V$
- * Low capacitance
- * Low gate charge
- * Fast switching capability
- * Avalanche energy specified

SYMBOL



SOP-8

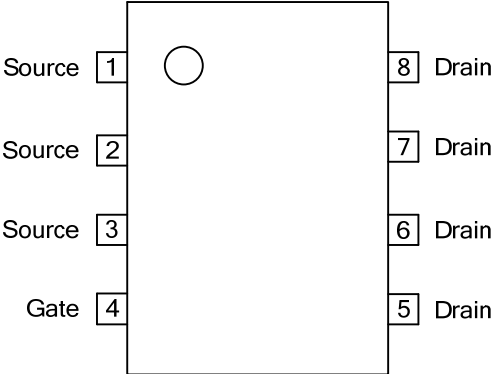
Lead-free: UT4406L
Halogen-free: UT4406G

ORDERING INFORMATION

Ordering Number			Package	Packing
Normal	Lead Free	Halogen Free		
UT4406-S08-R	UT4406L-S08-R	UT4406G-S08-R	SOP-8	Tape Reel
UT4406-S08-T	UT4406L-S08-T	UT4406G-S08-T	SOP-8	Tube

<p>UT4406L-S08-R</p> <p>(1)Packing Type</p> <p>(2)Package Type</p> <p>(3)Lead Plating</p>	<p>(1) R: Tape Reel, T: Tube</p> <p>(2) S08: SOP-8</p> <p>(3) G: Halogen Free, L: Lead Free, Blank: Pb/Sn</p>
---	---

■ PIN CONFIGURATION



■ ABSOLUTE MAXIMUM RATINGS (T_A = 25°C, unless otherwise specified)

PARAMETER	SYMBOL	RATINGS	UNIT
Drain-Source Voltage	V _{DSS}	30	V
Gate-Source Voltage	V _{GSS}	±12	
Continuous Drain Current	I _D	11.5	A
Pulsed Drain Current	I _{DM}	80	A
Avalanche Current (Note 2)	I _{AV}	25	A
Repetitive Avalanche Energy, L=0.1mH (Note 2)	E _{AV}	78	mJ
Power Dissipation	P _D	3	W
T _C =25°C			
Junction Temperature	T _J	+150	°C
Storage Temperature	T _{STG}	-55 ~ +150	°C

Note: 1. Absolute maximum ratings are those values beyond which the device could be permanently damaged.

Absolute maximum ratings are stress ratings only and functional device operation is not implied.

2. Pulse width limited by T_{J(MAX)}

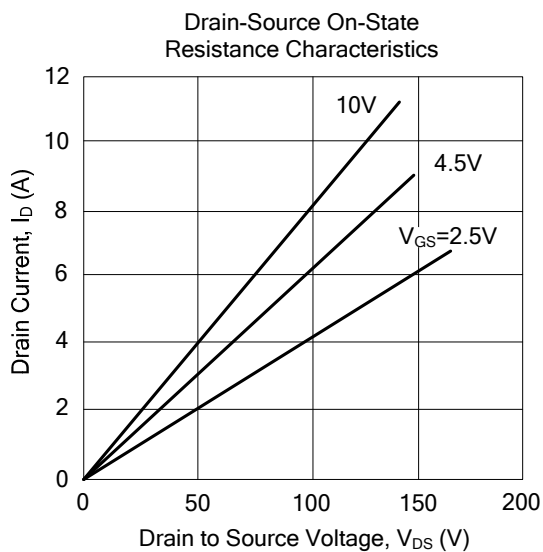
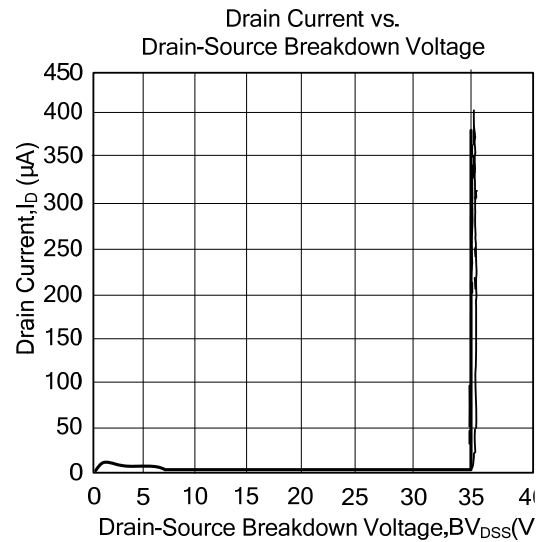
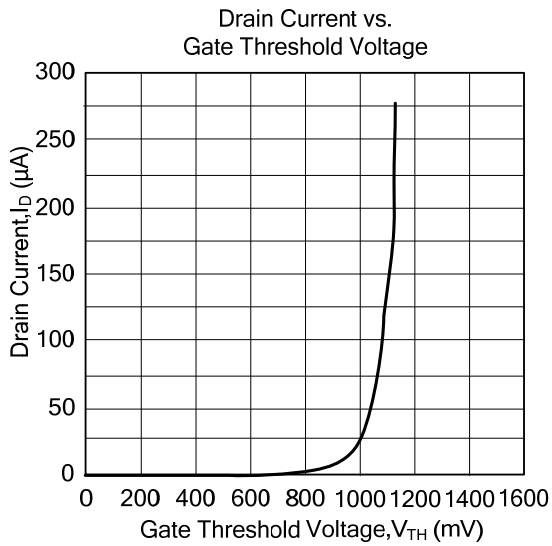
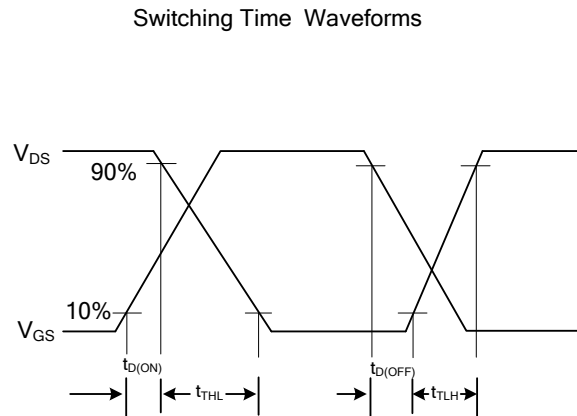
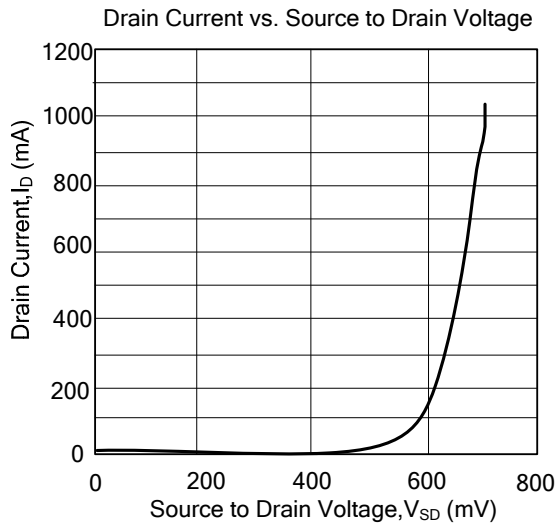
■ THERMAL DATA

PARAMETER	SYMBOL	MIN	TYP	MAX	UNIT
Junction-to-Ambient	θ _{JA}		48	65	°C/W
Junction-to-Case	θ _{JC}		12	16	

■ ELECTRICAL CHARACTERISTICS (T_J =25°C, unless otherwise specified)

PARAMETER	SYMBOL	TEST CONDITIONS	MIN	TYP	MAX	UNIT
OFF CHARACTERISTICS						
Drain-Source Breakdown Voltage	BV _{DSS}	V _{GS} =0V, I _D =250μA	30			V
Zero Gate Voltage Drain Current	I _{DSS}	V _{DS} =24V, V _{GS} =0V			1	μA
Gate-Body Leakage Current	I _{GSS}	V _{DS} =0V, V _{GS} =±12V			100	nA
ON CHARACTERISTICS						
Gate Threshold Voltage	V _{GS(TH)}	V _{DS} =V _{GS} , I _D =250μA	0.8	1	1.5	V
On State Drain Current	I _{D(ON)}	V _{DS} =5V, V _{GS} =4.5V	60			A
Static Drain-Source On-Resistance	R _{DS(ON)}	V _{GS} =10V, I _D =12A		11.5	14.8	mΩ
		V _{GS} =4.5V, I _D =10A		13.5	17.5	
		V _{GS} =2.5V, I _D =8A		19.5	26.8	
DYNAMIC PARAMETERS						
Input Capacitance	C _{ISS}	V _{DS} =15V, V _{GS} =0V, f=1MHz		1630		pF
Output Capacitance	C _{OSS}			201		pF
Reverse Transfer Capacitance	C _{RSS}			142		pF
SWITCHING PARAMETERS						
Turn-ON Delay Time	t _{D(ON)}	V _{GS} =10V, V _{DS} =15V, R _L =1.2Ω, R _G =3Ω		4		ns
Turn-ON Rise Time	t _R			5		ns
Turn-OFF Delay Time	t _{D(OFF)}			32		ns
Turn-OFF Fall-Time	t _F			5		ns
Total Gate Charge	Q _G				18	
Gate Source Charge	Q _{GS}	V _{DS} =15V, V _{GS} =4.5V, I _D =11.5A		2.5		nC
Gate Drain Charge	Q _{GD}			5.5		nC
SOURCE- DRAIN DIODE RATINGS AND CHARACTERISTICS						
Diode Forward Voltage	V _{SD}	I _S =10A, V _{GS} =0V		0.83	1	V
Maximum Body-Diode Continuous Current	I _S				4.5	A
Body Diode Reverse Recovery Time	t _{RR}	I _F =10A, dI/dt=100A/μs		18.7		ns
Body Diode Reverse Recovery Charge	Q _{RR}	I _F =10A, dI/dt=100A/μs		19.8		nC

TYPICAL CHARACTERISTICS



UTC assumes no responsibility for equipment failures that result from using products at values that exceed, even momentarily, rated values (such as maximum ratings, operating condition ranges, or other parameters) listed in products specifications of any and all UTC products described or contained herein. UTC products are not designed for use in life support appliances, devices or systems where malfunction of these products can be reasonably expected to result in personal injury. Reproduction in whole or in part is prohibited without the prior written consent of the copyright owner. The information presented in this document does not form part of any quotation or contract, is believed to be accurate and reliable and may be changed without notice.