



4053

CMOS IC

TRIPLE 2-CHANNEL ANALOG MULTIPLEXERS/DEMULPLEXERS

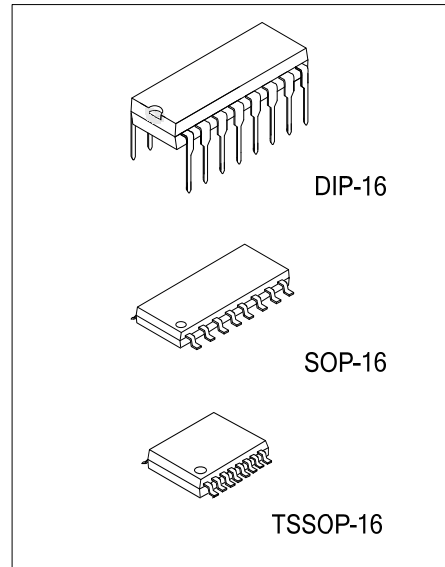
DESCRIPTION

UTC 4053 is triple 2-channel analog multiplexers/demultiplexers for application as digitally-controlled analog switches.

The device has three separate digital control inputs and an inhibit input. It feature low ON impedance and very low OFF leakage current. Control of analog signals up to the complete supply voltage range can be achieved.

FEATURES

- * Wide Analog Voltage Range: $V_{DD}-V_{EE} = 3V\sim 18V$.
(Note: V_{EE} must be $\leq V_{SS}$)
- * Break-Before-Make Switching Eliminates Channel Overlap.
- * Linearized Transfer Characteristics
- * Implement an SPDT Switch Effectively.
- * Pin to Pin Replacement for CD4053

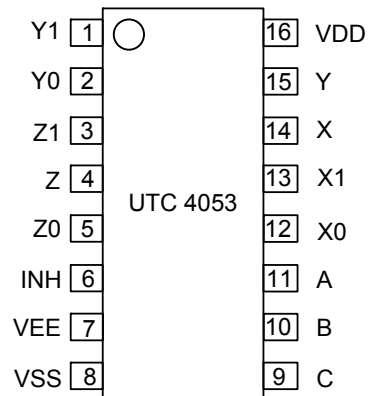


ORDERING INFORMATION

| Ordering Number | | Package | Packing |
|-----------------|--------------|----------|-----------|
| Lead Free | Halogen Free | | |
| 4053L-D16-T | 4053G-D16-T | DIP-16 | Tube |
| 4053L-P16-R | 4053G-P16-R | TSSOP-16 | Tape Reel |
| 4053L-P16-T | 4053G-P16-T | TSSOP-16 | Tube |
| 4053L-S16-R | 4053G-S16-R | SOP-16 | Tape Reel |
| 4053L-S16-T | 4053G-S16-T | SOP-16 | Tube |

| | |
|---|--|
| <p>4053L-D16-R</p> <p>(1) Packing Type</p> <p>(2) Package Type</p> <p>(3) Lead Free</p> | <p>(1) T: Tube, R: Tape Reel</p> <p>(2) D16: DIP-16, P16: TSSOP-16, S16: SOP-16</p> <p>(3) G: Halogen Free, L: Lead Free</p> |
|---|--|

■ PIN CONFIGURATION



■ PIN DESCRIPTION

| PIN No. | SYMBOL | NAME AND FUNCTION |
|---------|-----------------|-----------------------------|
| 14,15,4 | X,Y,Z | Commons Input/Output |
| 6 | INH | Inhibit Input |
| 7 | V _{EE} | Supply Voltage |
| 8 | V _{SS} | Ground |
| 11,10,9 | A,B,C | Digital Control Inputs |
| 12,13 | X0,X1 | A-X Switches Inputs/Outputs |
| 2,1 | Y0,Y1 | B-Y Switches Inputs/Outputs |
| 5,3 | Z0,Z1 | C-Z Switches Inputs/Outputs |
| 16 | V _{DD} | Positive Supply Voltage |

■ ABSOLUTE MAXIMUM RATING

| PARAMETER | SYMBOL | RATINGS | UNIT |
|--|----------------------|-----------------------|-------|
| DC Supply Voltage (Referenced to V_{EE} , $V_{SS} \geq V_{EE}$) | V_{DD} | -0.5 ~ +18 | V |
| Input or Output Voltage (DC or Transient) (Referenced to V_{SS} for Control Inputs and V_{EE} for Switch I/O) | V_{IN} , V_{OUT} | -0.5 ~ $V_{DD} + 0.5$ | V |
| Input Current (DC or Transient), per Control Pin | I_{IN} | ± 10 | mA |
| Switch Through Current | I_{SW} | ± 25 | mA |
| Power Dissipation | P_D | 500 | mW |
| Derating above 65°C | | 7 | mW/°C |
| Junction Temperature | T_J | 125 | °C |
| Operating Temperature | T_{OPR} | -40 ~ +125 | °C |
| Storage Temperature | T_{STG} | -40 ~ +150 | °C |

Note: Absolute maximum ratings are those values beyond which the device could be permanently damaged.

Absolute maximum ratings are stress ratings only and functional device operation is not implied.

■ ELECTRICAL CHARACTERISTICS ($T_A=25^\circ\text{C}$, unless otherwise specified.)

| PARAMETER | SYMBOL | TEST CONDITIONS | MIN | TYP | MAX | UNIT | |
|---|---------------------|--|--|---|---------------|---------------|---|
| SUPPLY REQUIREMENTS (Voltages Referenced to V_{EE}) | | | | | | | |
| Power Supply Voltage Range | V_{DD} | $V_{DD} - 3 \geq V_{SS} \geq V_{EE}$ | 3 | | 18 | V | |
| Quiescent Current per Package | $V_{DD}=5\text{V}$ | Control Inputs: $V_{IN} = V_{SS}$ or V_{DD} Switch I/O: $V_{EE} \leq V_{I/O} \leq V_{DD}$, $\Delta V_{SW} \leq 500\text{mV}$ (Note 2) | | 0.005 | 5 | μA | |
| | $V_{DD}=10\text{V}$ | | | 0.010 | 10 | μA | |
| | $V_{DD}=15\text{V}$ | | | 0.015 | 20 | μA | |
| Total Supply Current (Dynamic Plus Quiescent, Per Package) | $V_{DD}=5\text{V}$ | $T_A=25^\circ\text{C}$ only (The channel component, $(V_{IN}-V_{OUT})/R_{ON}$, is excluded) | | $(0.07 \mu\text{A}/\text{kHz}) f + I_Q$ | | μA | |
| | $V_{DD}=10\text{V}$ | | | $(0.20 \mu\text{A}/\text{kHz}) f + I_Q$ | μA | | |
| | $V_{DD}=15\text{V}$ | | | $(0.36 \mu\text{A}/\text{kHz}) f + I_Q$ | μA | | |
| SWITCHES IN/OUT AND COMMONS OUT/IN -- X, Y, Z (Voltages Referenced to V_{EE}) | | | | | | | |
| Recommended Peak-to-Peak Voltage Into or Out of the Switch | $V_{I/O}$ | Channel On or Off | 0 | | V_{DD} | V_{PP} | |
| Recommended Static or Dynamic Voltage Across the Switch (Note2) | ΔV_{SW} | Channel On | 0 | | 600 | mV | |
| Output Offset Voltage | $V_{O(OFF)}$ | $V_{IN} = 0\text{V}$, No Load | | 10 | | μV | |
| ON Resistance | $V_{DD}=5\text{V}$ | $\Delta V_{SW} \leq 500\text{mV}$ $V_{IN} = V_{IL}$ or V_{IH} (Control), and $V_{IN} = 0$ to V_{DD} (Switch) | | 250 | 1050 | Ω | |
| | $V_{DD}=10\text{V}$ | | | 120 | 500 | Ω | |
| | $V_{DD}=15\text{V}$ | | | 80 | 280 | Ω | |
| Δ ON Resistance Between Any Two Channels in the Same Package | $V_{DD}=5\text{V}$ | ΔR_{ON} | | 25 | 70 | Ω | |
| | $V_{DD}=10\text{V}$ | | | 10 | 50 | Ω | |
| | $V_{DD}=15\text{V}$ | | | 10 | 45 | Ω | |
| Off-Channel Leakage Current | I_{OFF} | $V_{IN} = V_{IL}$ or V_{IH} (Control) Channel to Channel or Any One Channel, $V_{DD}=15\text{V}$ | | ± 0.05 | ± 100 | nA | |
| Capacitance, Switch I/O | $C_{I/O}$ | Inhibit = V_{DD} | | 10 | | pF | |
| Capacitance, Common O/I | $C_{O/I}$ | Inhibit = V_{DD} | | 17 | | pF | |
| Capacitance, Feedthrough (Channel Off) | $C_{I/O}$ | Pins Not Adjacent | | 0.15 | | pF | |
| | | Pins Adjacent | | 0.47 | | pF | |
| CONTROL INPUTS – INHIBIT A, B, C (Voltages Referenced to V_{SS}) | | | | | | | |
| Low Level Input Voltage | $V_{DD}=5\text{V}$ | V_{IL} | $R_{ON} = \text{per spec}$, $I_{OFF} = \text{per spec}$ | | 2.25 | 1.5 | V |
| | $V_{DD}=10\text{V}$ | | | | 4.50 | 3.0 | V |
| | $V_{DD}=15\text{V}$ | | | | 6.75 | 4.0 | V |
| High Level Input Voltage | $V_{DD}=5\text{V}$ | V_{IH} | $R_{ON} = \text{per spec}$, $I_{OFF} = \text{per spec}$ | 3.5 | 2.75 | | V |
| | $V_{DD}=10\text{V}$ | | | 7.0 | 5.50 | | V |
| | $V_{DD}=15\text{V}$ | | | 11 | 8.25 | | V |
| Input Leakage Current | I_{LEAK} | $V_{IN} = 0$ or V_{DD} , $V_{DD}=15\text{V}$ | | ± 0.00001 | ± 0.1 | μA | |
| Input Capacitance | C_{IN} | | | 5.0 | 7.5 | pF | |

■ DYNAMIC ELECTRICAL CHARACTERISTICS

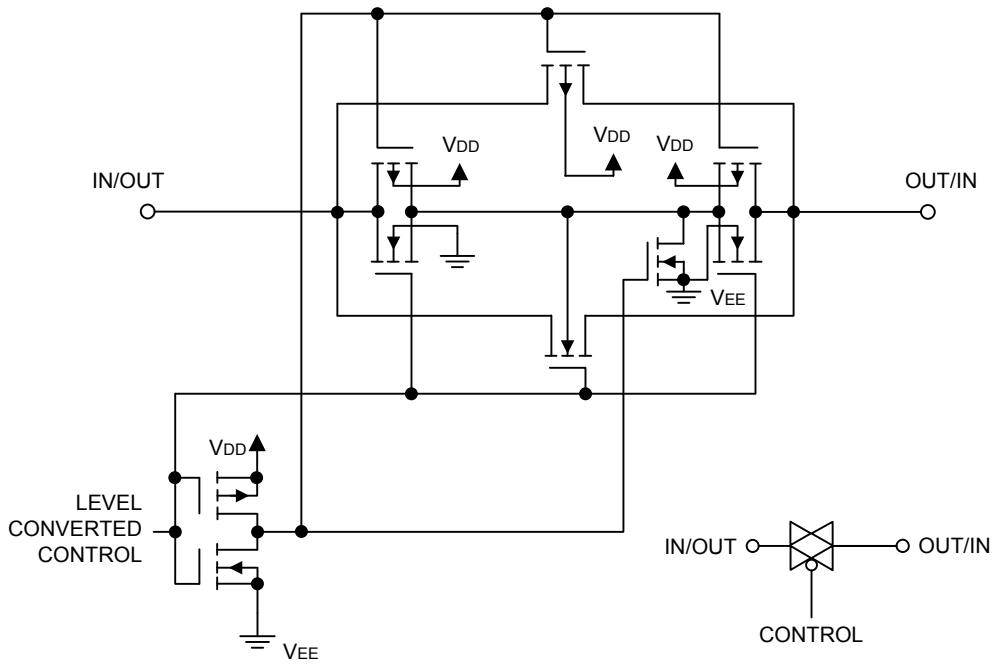
($C_L = 50\text{pF}$, $T_A = 25^\circ\text{C}$, $V_{EE} \leq V_{SS}$, unless otherwise specified)

| PARAMETER | SYMBOL | $V_{DD}-V_{EE}$ V_{DC} | TEST CONDITIONS | MIN | TYP | MAX | UNIT |
|---|--|-----------------------------|---|-----|------|-----|------|
| Propagation Delay Times Switch Input to Switch Output ($R_L = 10\text{ k}\Omega$) | t_{PLH} , t_{PHL} | 5 | t_{PLH} , $t_{PHL} = (0.17\text{ ns/pF})C_L + 16.5\text{ns}$ | | 25 | 65 | ns |
| | | 10 | t_{PLH} , $t_{PHL} = (0.08\text{ ns/pF})C_L + 4.0\text{ns}$ | | 8.0 | 20 | ns |
| | | 15 | t_{PLH} , $t_{PHL} = (0.06\text{ ns/pF})C_L + 3.0\text{ns}$ | | 6.0 | 15 | ns |
| Inhibit to Output | t_{PHZ} , t_{PLZ} t_{PZH} , t_{PZL} | 5 | $(R_L = 10\text{k}\Omega, V_{EE} = V_{SS})$, Output "1" or "0" to High Impedance, or High Impedance to "1" or "0" Level | | 275 | 550 | ns |
| | | 10 | | | 140 | 280 | ns |
| | | 15 | | | 110 | 220 | ns |
| Control Input to Output | t_{PLH} , t_{PHL} | 5 | $R_L = 10\text{k}\Omega, V_{EE} = V_{SS}$ | | 300 | 600 | ns |
| | | 10 | | | 120 | 240 | ns |
| | | 15 | | | 80 | 160 | ns |
| Total Harmonic Distortion | THD | 10 | $R_L = 10\text{k}\Omega, f = 1\text{ kHz}, V_{IN} = 5\text{ V}_{PP}$ | | 0.07 | | % |
| Bandwidth | BW | 10 | $R_L = 1\text{k}\Omega, V_{IN} = 1/2(V_{DD}-V_{EE})\text{ p-p}$, $C_L = 50\text{pF}, 20\text{ Log}(V_{OUT}/V_{IN}) = -3\text{dB}$ | | 17 | | MHz |
| Off Channel Feedthrough Attenuation | | 10 | $R_L = 1\text{k}\Omega, V_{IN} = 1/2(V_{DD}-V_{EE})\text{ p-p}$ $f_{IN} = 55\text{MHz}$ | | -50 | | dB |
| Channel Separation | | 10 | $R_L = 1\text{k}\Omega, V_{IN} = 1/2(V_{DD}-V_{EE})\text{ p-p}$ $f_{IN} = 3\text{MHz}$ | | -50 | | dB |
| Crosstalk, Control Input to Common O/I | | 10 | $R_1 = 1\text{k}\Omega, R_L = 10\text{k}\Omega$ Control $t_{TLH} = t_{THL} = 20\text{ns}$, Inhibit = V_{SS} | | 75 | | mV |

Note: 1. Data of "TYP" is intended as an indication of the IC's potential performance.

2. For voltage drops across the switch (ΔV_{SW}) > 600mV (> 300mV at high temperature), excessive V_{DD} current may be drawn, i.e. the current out of the switch may contain both V_{DD} and switch input components. The reliability of the device will be unaffected unless the Maximum Ratings are exceeded.

■ TEST CIRCUIT

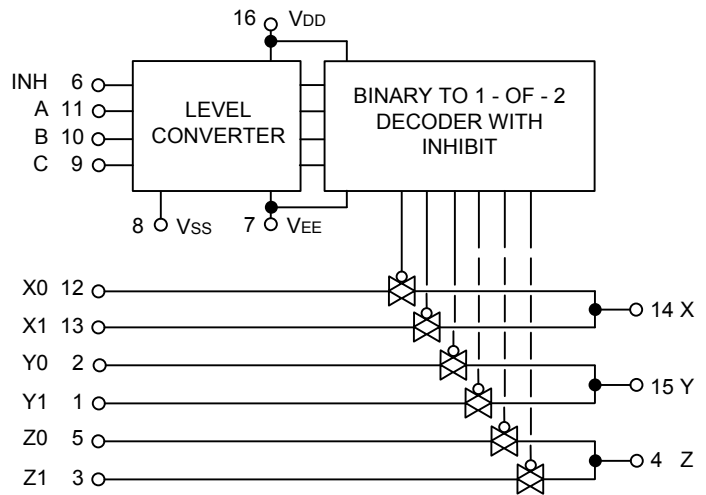


Switch Circuit Schematic

■ TRUTH TABLE

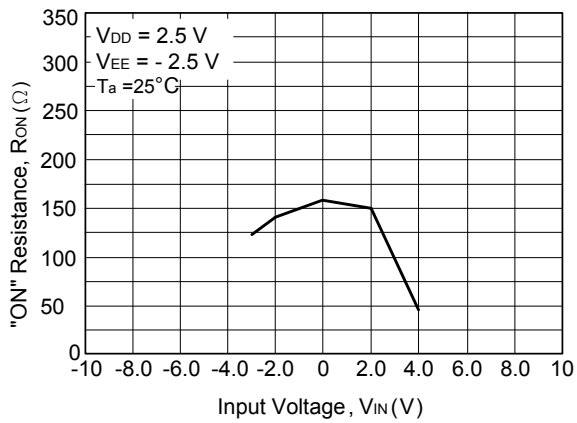
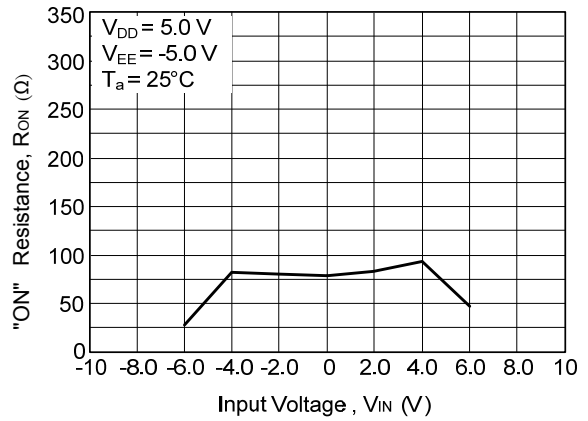
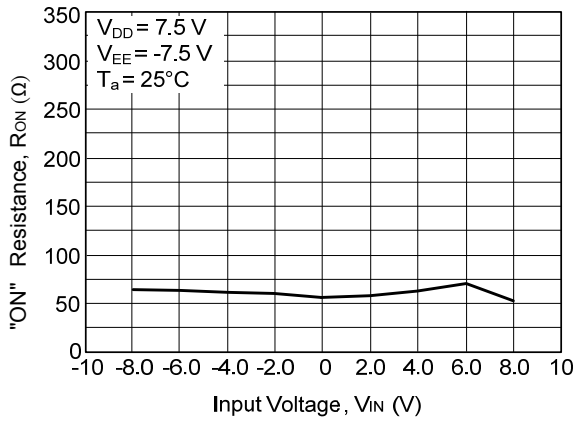
| Control Inputs | | ON Switches | | | | |
|----------------|--------|-------------|---|----------|----|----|
| INHIBIT | Select | | | UTC 4053 | | |
| | C | B | A | Z0 | Y0 | X0 |
| 0 | 0 | 0 | 0 | Z0 | Y0 | X0 |
| 0 | 0 | 0 | 1 | Z0 | Y0 | X1 |
| 0 | 0 | 1 | 0 | Z0 | Y1 | X0 |
| 0 | 0 | 1 | 1 | Z0 | Y1 | X1 |
| 0 | 1 | 0 | 0 | Z1 | Y0 | X0 |
| 0 | 1 | 0 | 1 | Z1 | Y0 | X1 |
| 0 | 1 | 1 | 0 | Z1 | Y1 | X0 |
| 0 | 1 | 1 | 1 | Z1 | Y1 | X1 |
| 1 | x | x | x | None | | |

x = Don't Care



UTC 4053 Functional Diagram

■ TYPICAL CHARACTERISTICS



UTC assumes no responsibility for equipment failures that result from using products at values that exceed, even momentarily, rated values (such as maximum ratings, operating condition ranges, or other parameters) listed in products specifications of any and all UTC products described or contained herein. UTC products are not designed for use in life support appliances, devices or systems where malfunction of these products can be reasonably expected to result in personal injury. Reproduction in whole or in part is prohibited without the prior written consent of the copyright owner. The information presented in this document does not form part of any quotation or contract, is believed to be accurate and reliable and may be changed without notice.