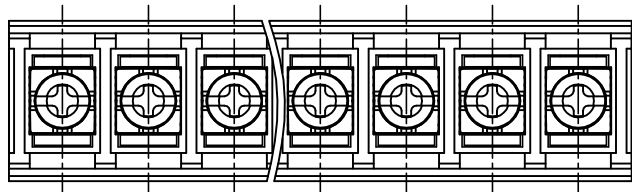


SIGN	DATE	DESCRIPTION	APPROVER
THIS IS CAD DRAWING, DO NOT REVISE MANUALLY!!!			



SPECIFICATIONS:

RATED VOLTAGE & CURRENT: 300 V, 20 A

WITHSTANDING VOLTAGE: AC 2000 V/Min

INSULATION RESISTANCE: 1000 MΩ OR MORE AT DC 500 V

OPERATING TEMPERATURE RANGE: -40 °C ~ +105 °C

SCREW TORQUE VALUE: 7 Lb-In.


WIRE RANGE: 22 - 12 AWG

1) MOLDED PARTS: POLYIMIDE 66, UL 94 V-0 BLACK

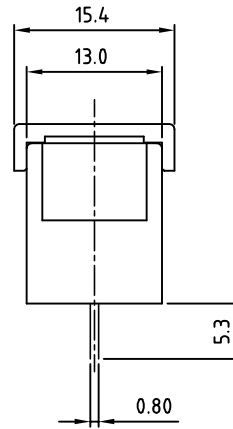
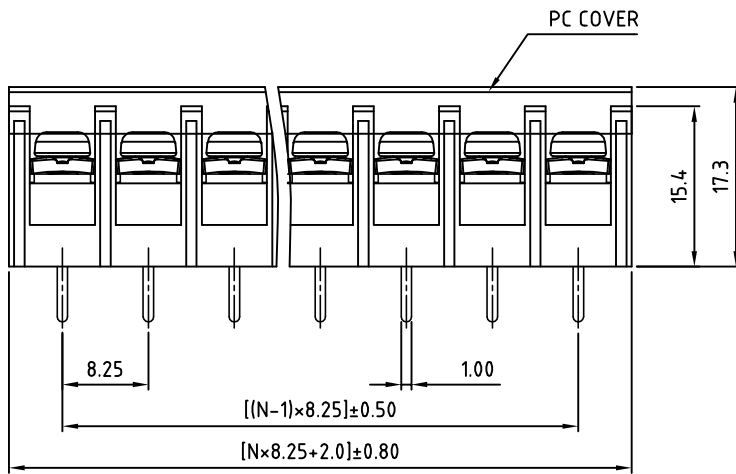
2) TERMINAL: BRASS, 0.8t, Tin PLATED

3) TERMINAL SCREWS: STEEL, Ni PLATED, M3

4) COVER MATERIAL: PC

APPROVAL:  us

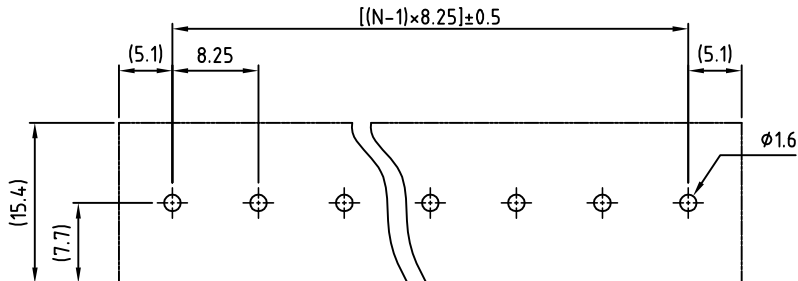
RoHS Compliant



PART NUMBER:
OSTYK402XX230

No. of Poles ————
02: 2 Poles
03: 3 Poles
04: 4 Poles
:
30: 30 Poles

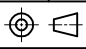
N=Number of poles



P.C.B LAYOUT

THESE DRAWINGS AND SPECIFICATIONS ARE THE PROPERTY OF ON-SHORE TECHNOLOGY, INC. AND SHALL NOT BE REPRODUCED, COPIED OR USED IN ANY MANNER WITHOUT THE PRIOR WRITTEN CONSENT OF ON-SHORE TECHNOLOGY, INC.



TITLE		OSTYK-402 W/O Flange & With Cover Series				
PART NO.	OSTYK402XX230	DWG NO.	OSTYK402XX230.DWG			
APPROVED	CHECKED	DESIGNED	DRAWN	CUST NO.		
		kind 2008.1.15	kind 2008.1.15			
					UNIT: mm	Tolerance
					SCALE: NONE	X.X ±0.50
				SHEET: 01/01	REV: B	X.XX ±0.30
						X° ±0.10
						X° ±1°