

SPECIFICATIONS:

<b>ELECTRICAL:</b>	
INSULATOR RESISTANCE:	5 G OHMS Min.
DIELECTRIC WITHSTANDING:	1,000VAC r.m.s.
OPERATING TEMPERATURE:	-55° C ~ +125° C
POWER CONTACT RESISTANCE:	1.0 Milliohms Max.
SIGNAL CONTACT RESISTANCE:	2.7 Milliohms Max.
POWER PINS:	40 AMPS
SIGNAL PINS:	5 AMPS
<b>MECHANICAL:</b>	
CONTACT INSERTION FORCE:	4.5 Kg Max.
CONTACT SEPARATOR FORCE:	0.3Kg Min.
<b>MATERIALS:</b>	
CONTACTS:	COPPER ALLOY
INSULATOR:	PBT UL94V-0 RATED, BLK 230°C PROCESS TEMP.
SHELL:	STEEL
BOARD LOCK:	BRASS, NICKEL PLATED
CINCHNUT:	BRASS, NICKEL PLATED
BRACKET:	STEEL, NICKEL PLATED
SEAL:	F08 FLEXIBLE ADHESIVE
<b>FINISH:</b>	
SHELL:	NICKEL
CONTACTS:	FULL GOLD FLASH


684S9W4103L461

46 = 4-40 INSERTS / BOARD LOCKS

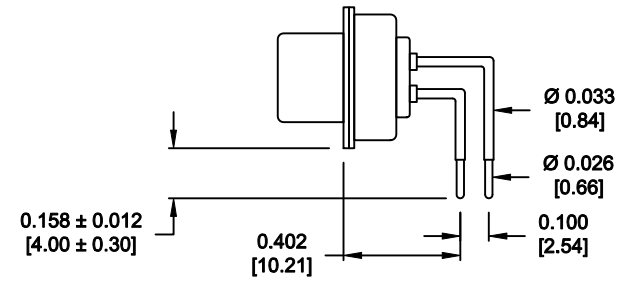
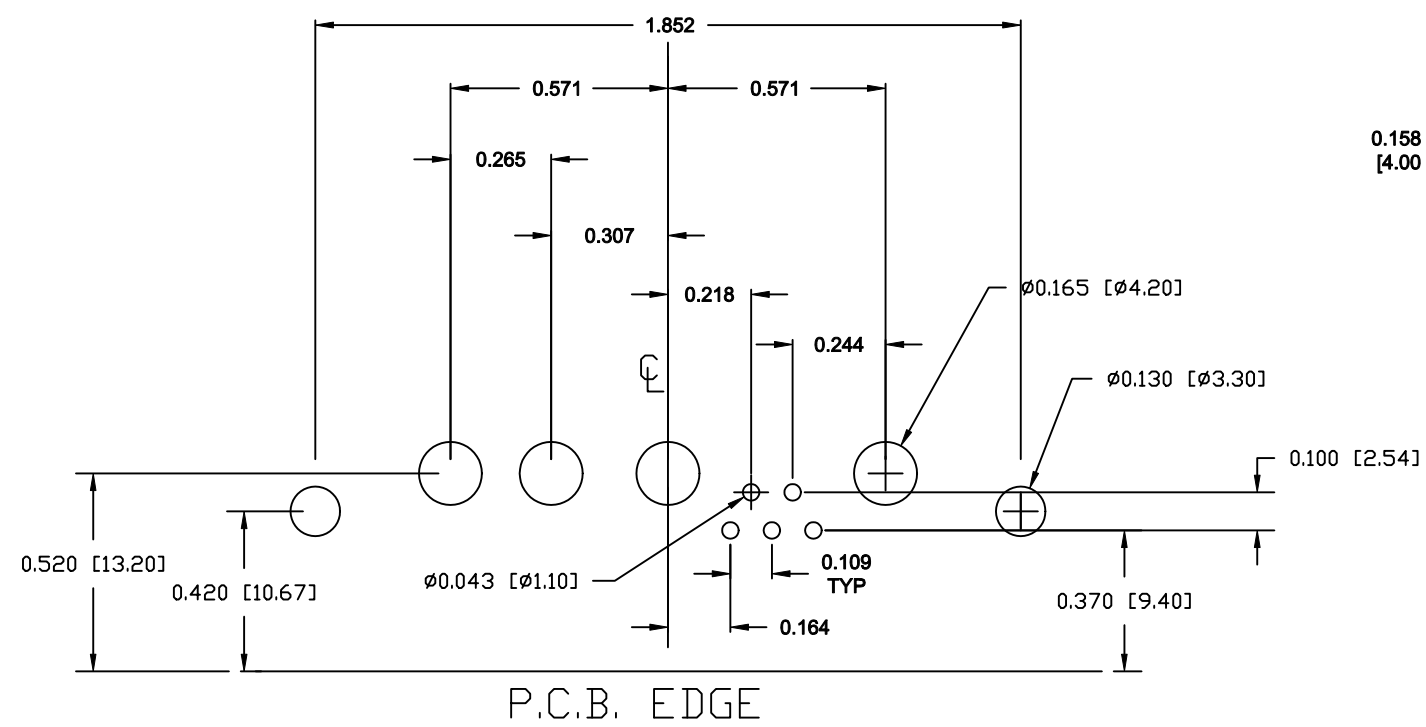
MEETS IP67 STANDARDS  
(SEE PAGE 3 FOR SEALING DETAILS)

DO NOT SCALE FROM DRAWING

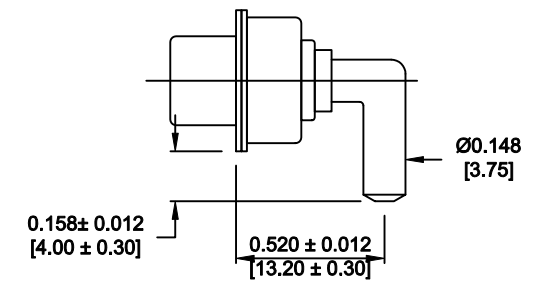
RoHS COMPLIANT

	THESE DRAWINGS AND SPECIFICATIONS ARE THE PROPERTY OF NorComp AND SHALL NOT BE REPRODUCED, COPIED OR USED AS THE BASIS FOR THE MANUFACTURE OF SALE OF APPARATUS WITHOUT WRITTEN PERMISSION.	DRAWN: M. SIGMON		DATE: 08-06-12	
		CHECKED:		DATE:	
<h1>NorComp</h1>		SCALE: N.T.S.	SHEET 1 OF 3		REV 3
		DWG NO. 684S9W4103L461			

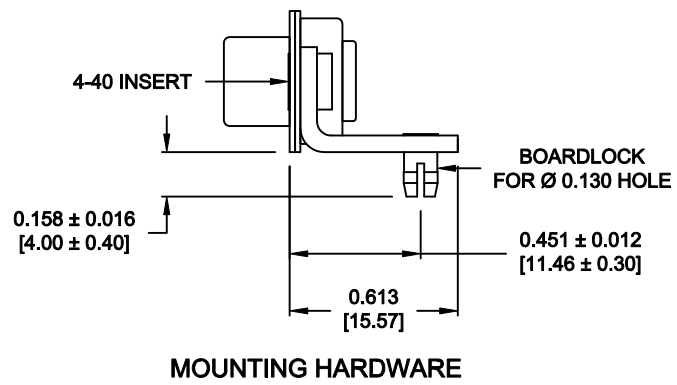
NOTE:  
POWER CONTACTS COME  
PRE-LOADED INTO INSULATORS



SIGNAL CONTACTS





40 AMP POWER CONTACT

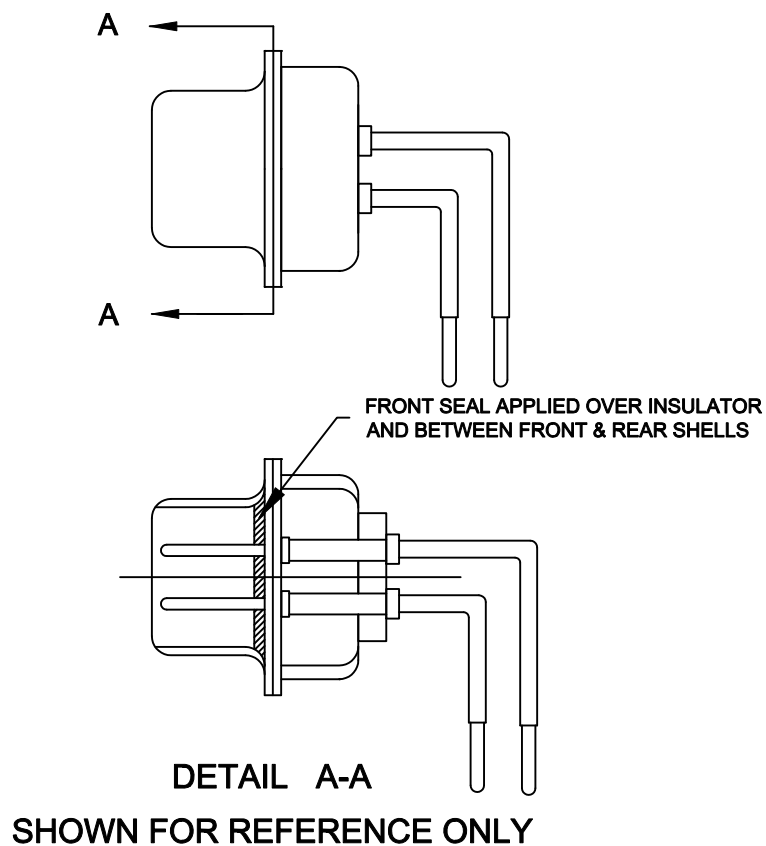


MOUNTING HARDWARE



DO NOT SCALE FROM DRAWING

	THESE DRAWINGS AND SPECIFICATIONS ARE THE PROPERTY OF NorComp AND SHALL NOT BE REPRODUCED, COPIED OR USED AS THE BASIS FOR THE MANUFACTURE OF SALE OF APPARATUS WITHOUT WRITTEN PERMISSION.	DRAWN: M. SIGMON		DATE: 08-06-12		
		CHECKED:		DATE:		
		SCALE: N.T.S.	SHEET 2		OF 3	REV 3
		DWG NO. 684S9W4103L461				

RoHS COMPLIANT



DO NOT SCALE FROM DRAWING

	THESE DRAWINGS AND SPECIFICATIONS ARE THE PROPERTY OF NorComp AND SHALL NOT BE REPRODUCED, COPIED OR USED AS THE BASIS FOR THE MANUFACTURE OF SALE OF APPARATUS WITHOUT WRITTEN PERMISSION.	DRAWN: M. SIGMON		DATE: 08-06-12		
		CHECKED:		DATE:		
		SCALE: N.T.S.	SHEET 3		OF 3	REV 3
		DWG NO. 684S9W4103L461				

RoHS COMPLIANT