

SPECIFICATIONS:

ELECTRICAL:

INSULATOR RESISTANCE: 5 G OHMS Min.

DIELECTRIC WITHSTANDING: 1,000VAC r.m.s.

OPERATING TEMPERATURE: -55° C ~ +125° C

POWER CONTACT RESISTANCE: 1.0 Milliohms Max.

SIGNAL CONTACT RESISTANCE: 2.7 Milliohms Max.

POWER PINS: 40 AMPS

SIGNAL PINS: 5 AMPS

MECHANICAL:

CONTACT INSERTION FORCE: 4.5 Kg Max.

CONTACT SEPARATOR FORCE: 0.3Kg Min.

MATERIALS:

CONTACTS: COPPER ALLOY

INSULATOR: PBT THERMOPLASTIC, 30% GLASS FILLED, UL94V-0 RATED, BLACK 230°C PROCESS TEMP.

SHELL: STEEL

BOARD LOCK: BRASS, NICKEL PLATED

CINCHNUT: BRASS, NICKEL PLATED

BRACKET: STEEL, NICKEL PLATED

SEAL: F08 FLEXIBLE ADHESIVE

FINISH:

SHELL: NICKEL


CONTACTS: FULL GOLD FLASH

684S21WA4PL461

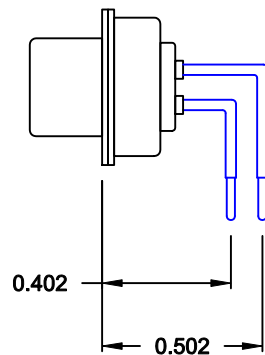
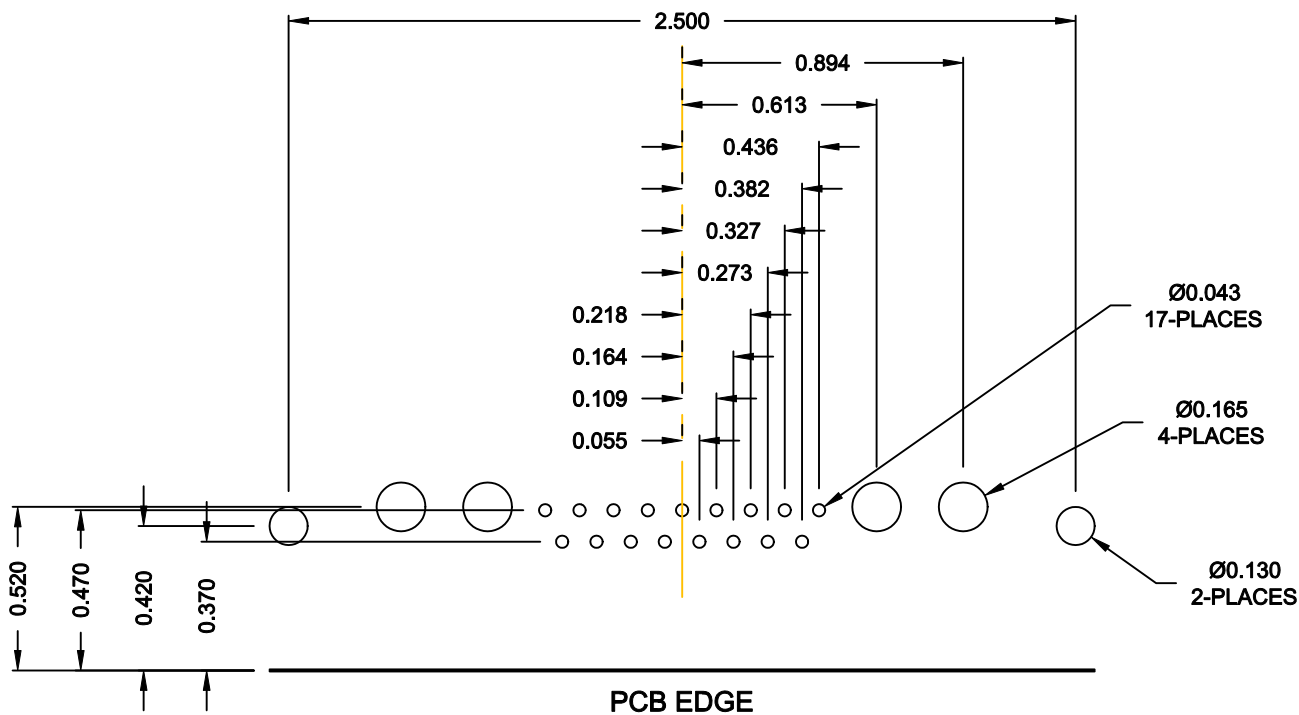
46 = 4-40 INSERTS /
BOARD LOCKS

RoHS COMPLIANT

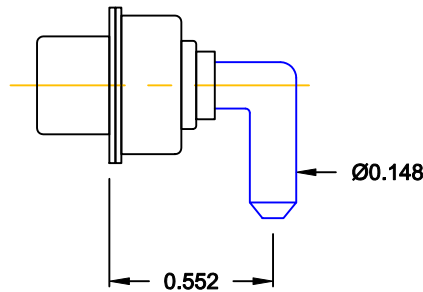
MEETS IP67 STANDARDS
(SEE PAGE 3 FOR SEALING DETAILS)

 NorComp	THESE DRAWINGS AND SPECIFICATIONS ARE THE PROPERTY OF NorComp AND SHALL NOT BE REPRODUCED, COPIED OR USED AS THE BASIS FOR THE MANUFACTURE OR SALE OF APPARATUS WITHOUT WRITTEN PERMISSION.		DRAWN: M. SIGMON		DATE: 06-12-13	
			CHECKED:		DATE:	
			SCALE: 1.5 = 1	SHEET 1	OF 3	REV 0
			DWG NO. 684S21WA4PL461			

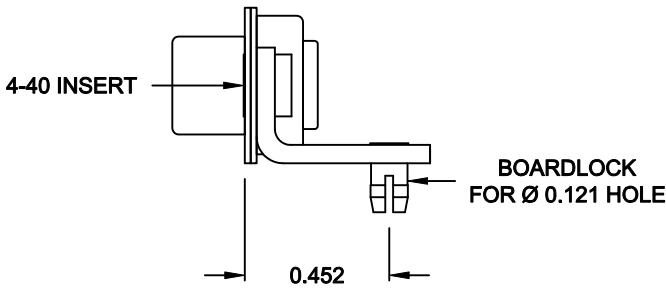
NOTE:
POWER CONTACTS COME
PRE-LOADED INTO INSULATORS



SIGNAL CONTACTS





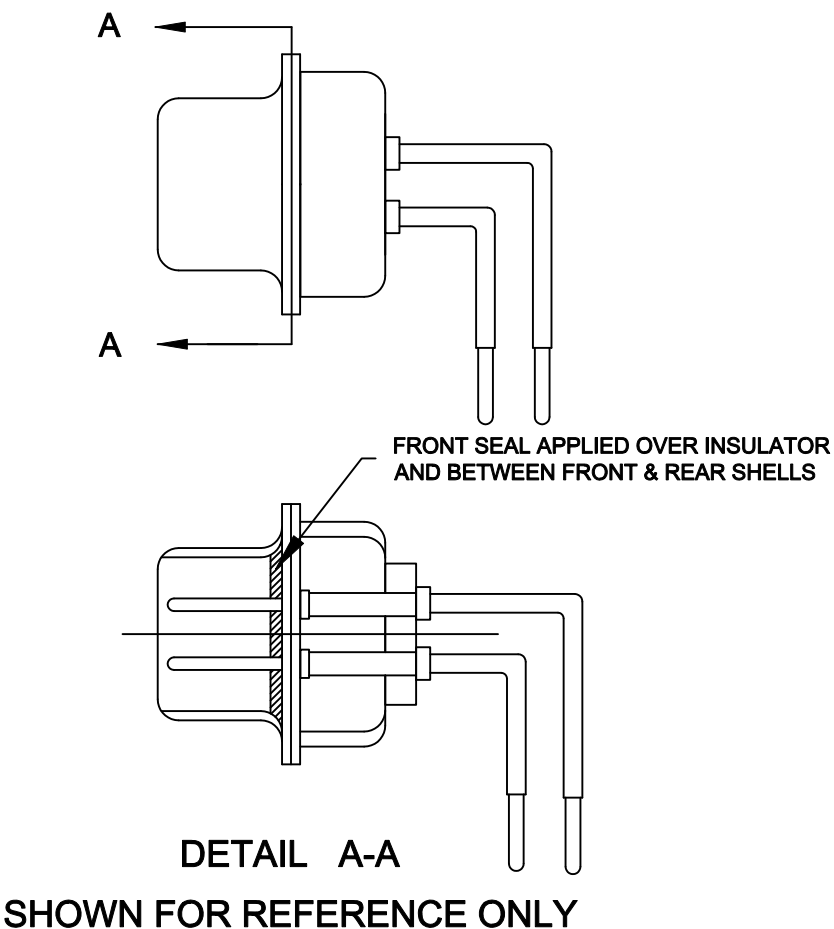
40 AMP POWER CONTACT




MOUNTING HARDWARE

RoHS COMPLIANT

	THESE DRAWINGS AND SPECIFICATIONS ARE THE PROPERTY OF NorComp AND SHALL NOT BE REPRODUCED, COPIED OR USED AS THE BASIS FOR THE MANUFACTURE OR SALE OF APPARATUS WITHOUT WRITTEN PERMISSION.	DRAWN: M. SIGMON		DATE: 06-12-13		
		CHECKED:		DATE:		
		SCALE: N.T.S.		SHEET 2 OF 3		REV 0
		DWG NO. 684S21WA4PL461				



RoHS COMPLIANT

	THESE DRAWINGS AND SPECIFICATIONS ARE THE PROPERTY OF NorComp AND SHALL NOT BE REPRODUCED, COPIED OR USED AS THE BASIS FOR THE MANUFACTURE OR SALE OF APPARATUS WITHOUT WRITTEN PERMISSION.	DRAWN: M. SIGMON		DATE: 06-12-13	
		CHECKED:		DATE:	
		SCALE: 1.5 = 1	SHEET 3 OF 3		REV 0
NorComp		DWG NO. 684S21WA4PL461			