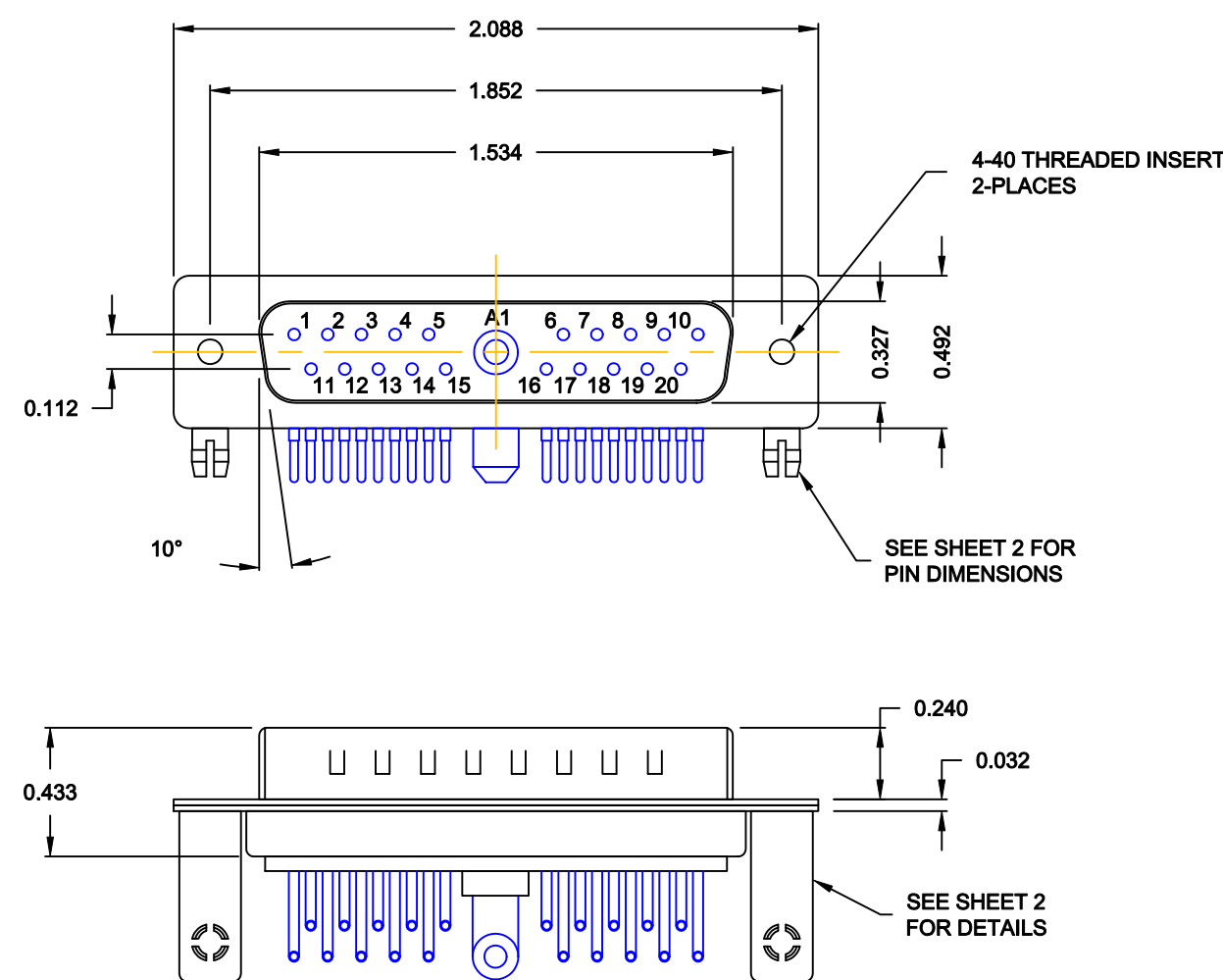


DESCRIPTION: POWER / SIGNAL - RIGHT ANGLE - MALE



SPECIFICATIONS:

ELECTRICAL:	
INSULATOR RESISTANCE:	5 G OHMS Min.
DIELECTRIC WITHSTANDING:	1,000VAC r.m.s.
OPERATING TEMPERATURE:	-55° C ~ +125° C
POWER CONTACT RESISTANCE:	1.0 Milliohms Max.
SIGNAL CONTACT RESISTANCE:	2.7 Milliohms Max.
POWER PINS:	40 AMPS
SIGNAL PINS:	5 AMPS
MECHANICAL:	
CONTACT INSERTION FORCE:	4.5 Kg Max.
CONTACT SEPARATOR FORCE:	0.3Kg Min.
MATERIALS:	
CONTACTS:	COPPER ALLOY
INSULATOR:	PBT THERMOPLASTIC, 30% GLASS FILLED, UL94V-0 RATED, BLACK 230°C PROCESS TEMP.
SHELL:	STEEL
BOARD LOCK:	BRASS, NICKEL PLATED
CINCHNUT:	BRASS, NICKEL PLATED
BACKET:	STEEL, NICKEL PLATED
SEAL:	F08 FLEXIBLE ADHESIVE



FINISH:	
SHELL:	NICKEL
CONTACTS:	FULL GOLD FLASH

68421W1103L461

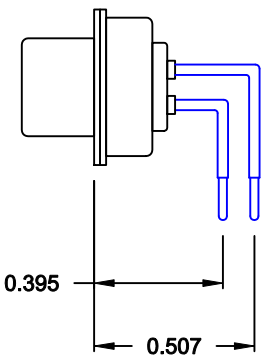
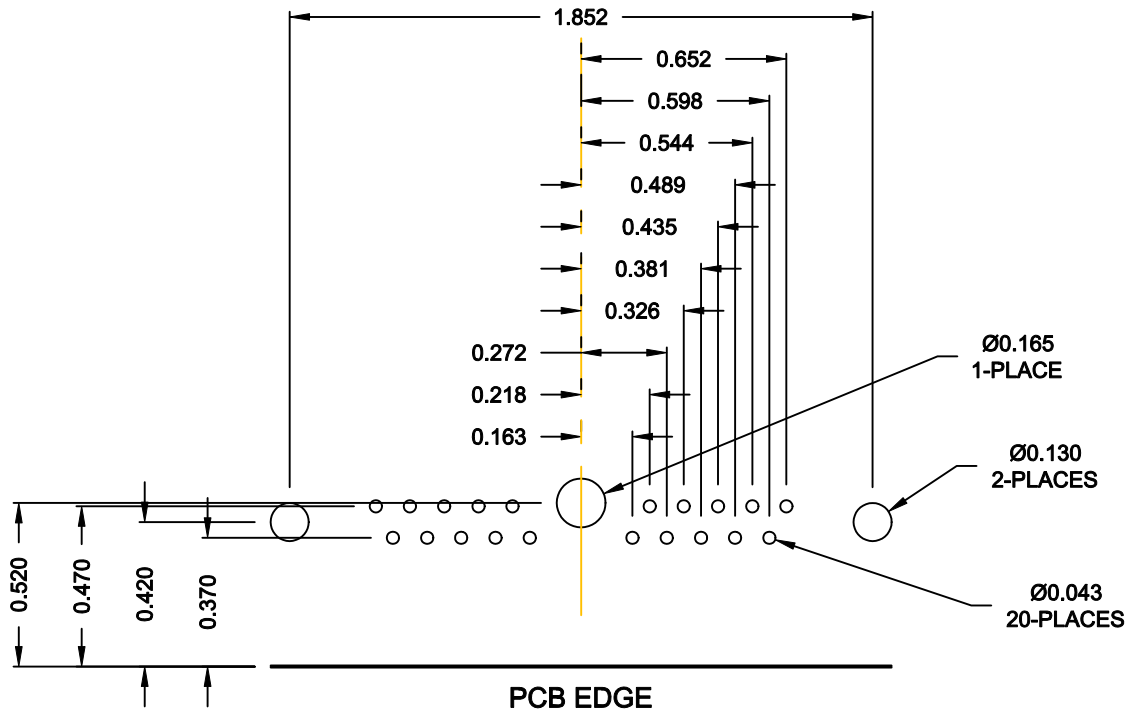
46 = 4-40 INSERTS / BOARD LOCKS

RoHS COMPLIANT

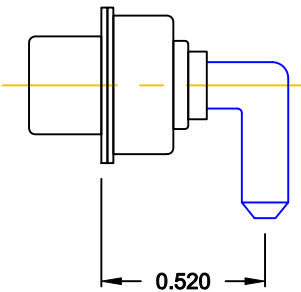
MEETS IP67 STANDARDS
(SEE PAGE 3 FOR SEALING DETAILS)

	THESE DRAWINGS AND SPECIFICATIONS ARE THE PROPERTY OF NorComp AND SHALL NOT BE REPRODUCED, COPIED OR USED AS THE BASIS FOR THE MANUFACTURE OR SALE OF APPARATUS WITHOUT WRITTEN PERMISSION.		DRAWN: M. SIGMON		DATE: 06-11-13					
			CHECKED:		DATE:					
			SCALE: 1.5 = 1	SHEET 1 OF 3	REV 0					
			DWG NO. 684S21W1103L461							

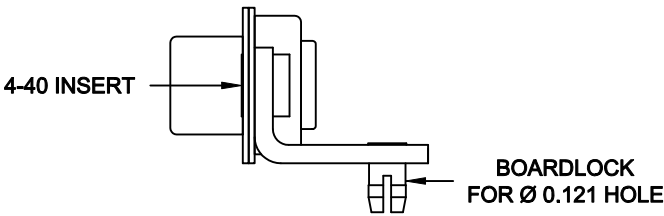
NOTE:
POWER CONTACTS COME
PRE-LOADED INTO INSULATORS



SIGNAL CONTACTS




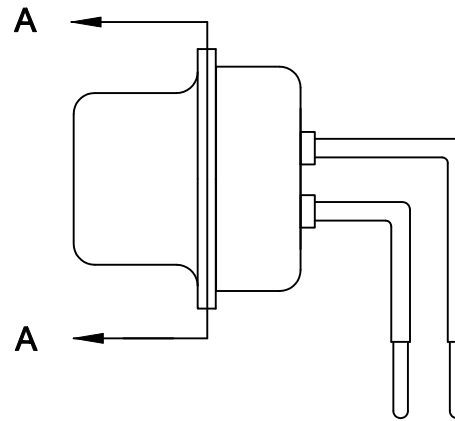
40 AMP POWER CONTACT



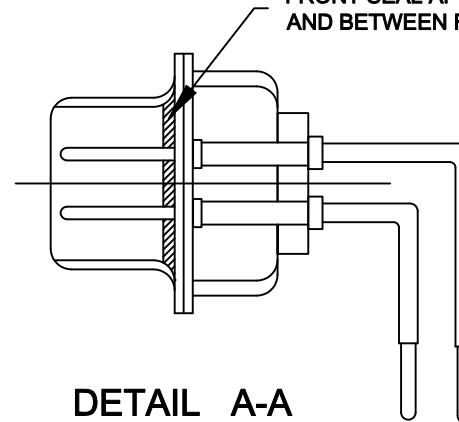
MOUNTING HARDWARE

RoHS COMPLIANT

	THESE DRAWINGS AND SPECIFICATIONS ARE THE PROPERTY OF NorComp AND SHALL NOT BE REPRODUCED, COPIED OR USED AS THE BASIS FOR THE MANUFACTURE OR SALE OF APPARATUS WITHOUT WRITTEN PERMISSION.	DRAWN: M. SIGMON		DATE: 06-11-13	
		CHECKED:		DATE:	
NorComp		SCALE: 1.5 = 1	SHEET 2 OF 3		REV 3
		DWG NO. 684S21W1103L461			




FRONT SEAL APPLIED OVER INSULATOR
AND BETWEEN FRONT & REAR SHELLS



DETAIL A-A

SHOWN FOR REFERENCE ONLY

DO NOT SCALE FROM DRAWING

	THESE DRAWINGS AND SPECIFICATIONS ARE THE PROPERTY OF NorComp AND SHALL NOT BE REPRODUCED, COPIED OR USED AS THE BASIS FOR THE MANUFACTURE OF SALE OF APPARATUS WITHOUT WRITTEN PERMISSION.	DRAWN: M. SIGMON		DATE: 06-11-13	
		CHECKED:		DATE:	
<h1>NorComp</h1>		SCALE: N.T.S.	SHEET 3 OF 3		REV 0
		DWG NO. 684S21W1103L461			

RoHS COMPLIANT

NorComp