

SPECIFICATIONS:


<b>ELECTRICAL:</b>	
INSULATOR RESISTANCE:	5 G OHMS Min.
DIELECTRIC WITHSTANDING:	1,000VAC r.m.s.
OPERATING TEMPERATURE:	-55° C ~ +155° C
POWER CONTACT RESISTANCE:	1.0 Milliohms Max.
SIGNAL CONTACT RESISTANCE:	2.7 Milliohms Max.
POWER PINS:	40 AMPS
SIGNAL PINS:	5 AMPS
<b>MECHANICAL:</b>	
CONTACT INSERTION FORCE:	4.5 Kg Max.
CONTACT SEPARATOR FORCE:	0.3Kg Min.
<b>MATERIALS:</b>	
CONTACTS:	COPPER ALLOY
INSULATOR:	PBT UL94V-0 RATED, BLK
	230°C PROCESS TEMP.
SHELL:	STEEL
SEAL:	F08 FLEXIBLE ADHESIVE
<b>FINISH:</b>	
SHELL:	NICKEL
CONTACTS:	FULL GOLD FLASH

681S5W1103L001

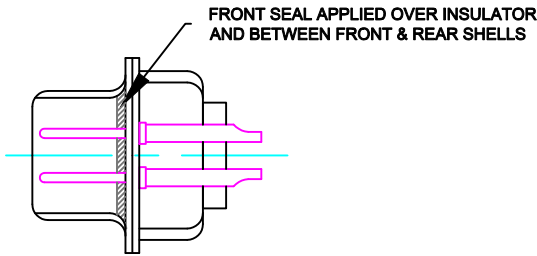
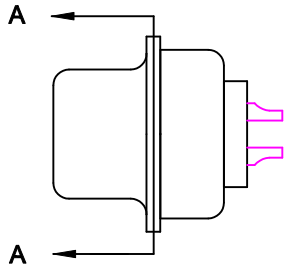
00 = 20 / 40 AMPS

MEETS IP67 STANDARDS  
(SEE PAGE 2 FOR SEALING DETAILS)

RoHS COMPLIANT

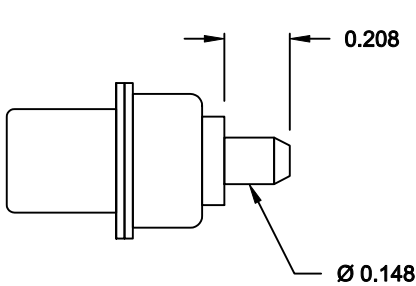
	THESE DRAWINGS AND SPECIFICATIONS ARE THE PROPERTY OF NorComp AND SHALL NOT BE REPRODUCED, COPIED OR USED AS THE BASIS FOR THE MANUFACTURE OF SALE OF APPARATUS WITHOUT WRITTEN PERMISSION.	DRAWN: <b>M. SIGMON</b>		DATE: <b>06-11-13</b>	
		CHECKED: <b>X</b>		DATE: <b>X</b>	
<b>NorComp</b>	SCALE: <b>N.T.S.</b>		SHEET <b>1</b>		OF <b>2</b>
					REV <b>0</b>
		DWG NO. <b>681S5W1103L001</b>			

NorComp

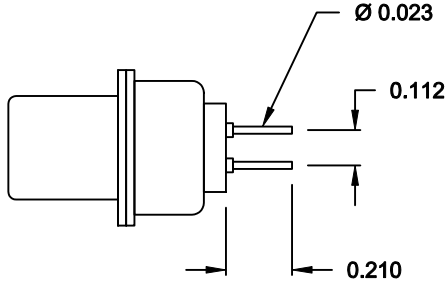


DETAIL A-A  
SHOWN FOR REFERENCE ONLY

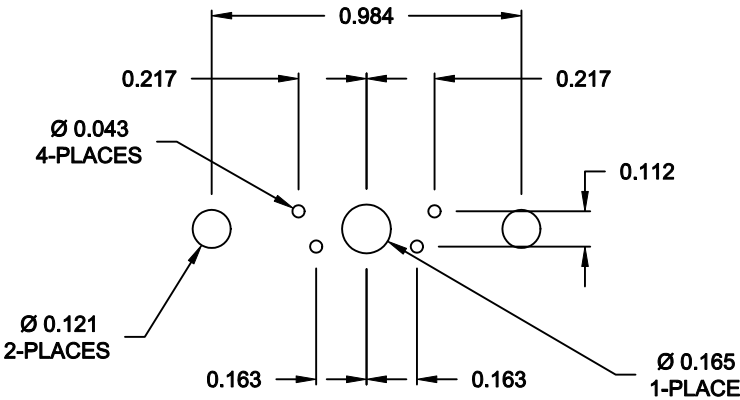
NOTE:  
SIGNAL AND POWER CONTACTS  
COME PRE-LOADED INTO INSULATORS



POWER CONTACTS



SIGNAL CONTACTS



RECOMMENDED PCB LAYOUT

RoHS COMPLIANT



THESE DRAWINGS AND SPECIFICATIONS  
ARE THE PROPERTY OF NorComp AND  
SHALL NOT BE REPRODUCED, COPIED  
OR USED AS THE BASIS FOR THE  
MANUFACTURE OF SALE OF APPARATUS  
WITHOUT WRITTEN PERMISSION.

DRAWN:  
**M. SIGMON**

DATE:  
**06-11-13**

CHECKED:  
**X**

DATE:  
**X**

SCALE:  
**N.T.S.**

SHEET  
**2** OF  
**2**

REV  
**0**

DWG NO. **681S5W1103L001**

**NorComp**