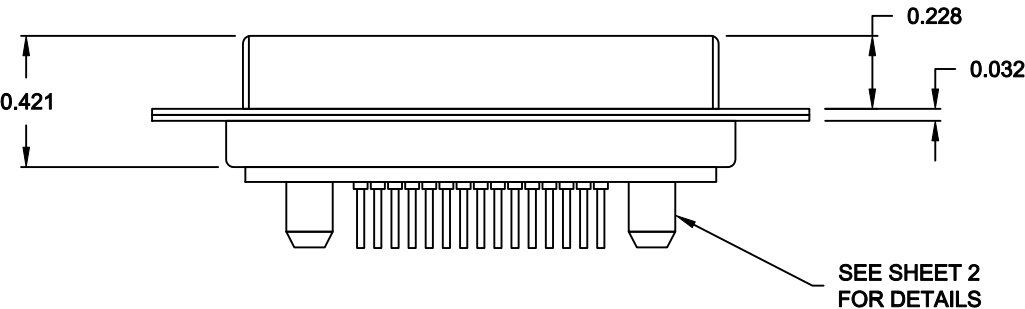
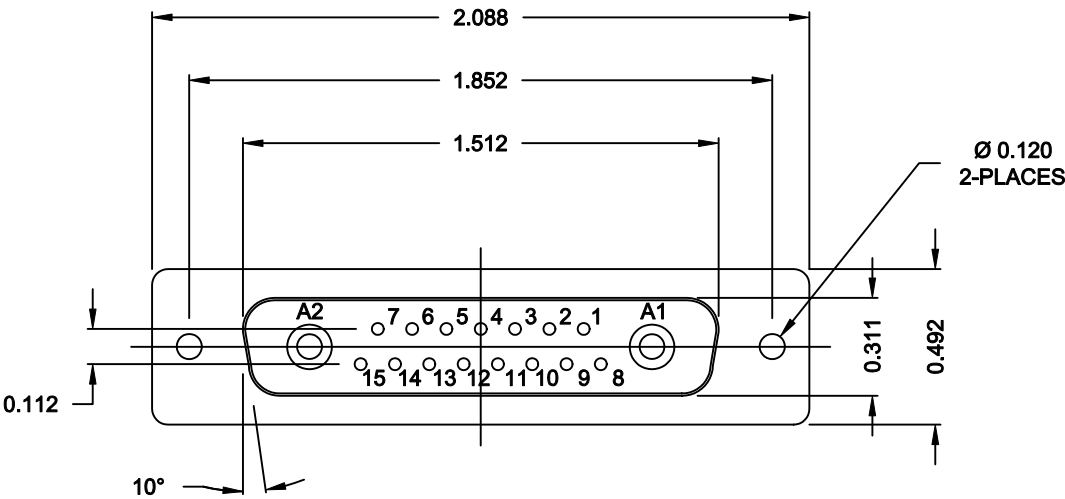


SPECIFICATIONS:

ELECTRICAL:	
INSULATOR RESISTANCE:	5 G OHMS Min.
DIELECTRIC WITHSTANDING:	1,000 VAC for 1 MINUTE.
OPERATING TEMPERATURE:	-55° C ~ +155° C
CONTACT RESISTANCE:	1.0MOHMS Max.
POWER PINS:	SEE PART No. BELOW
SIGNAL PINS:	5 AMPS
MECHANICAL:	
CONTACT INSERTION FORCE:	4.5 Kg Max.
CONTACT SEPARATOR FORCE:	0.3Kg Min.
MATERIALS:	
CONTACTS:	COPPER ALLOY
INSULATOR:	PBT UL94V-0 RATED, BLACK
	230°C PROCESS TEMP.
SHELL:	STEEL
SEAL:	F04 FLEXIBLE ADHESIVE
FINISH:	
SHELL:	NICKEL
CONTACTS:	FULL GOLD FLASH




681S17W2203L001

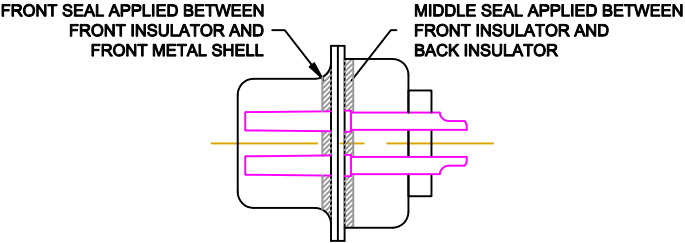
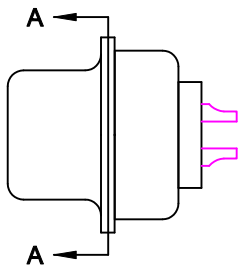
00 = 20 / 40 AMPS

MEETS IP67 STANDARDS

(SEE PAGE 2 FOR SEALING DETAILS)

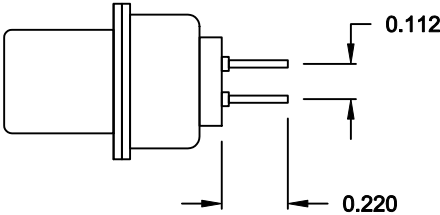
RoHS COMPLIANT

	THESE DRAWINGS AND SPECIFICATIONS ARE THE PROPERTY OF NorComp AND SHALL NOT BE REPRODUCED, COPIED OR USED AS THE BASIS FOR THE MANUFACTURE OR SALE OF APPARATUS WITHOUT WRITTEN PERMISSION.	DRAWN: <b>M. SIGMON</b>		DATE: <b>06-11-13</b>		
		CHECKED:		DATE:		
<b>NorComp</b>			SCALE: <b>1.5 = 1</b>	SHEET <b>1</b>	OF <b>3</b>	REV <b>0</b>
			DWG NO. <b>681S17W2203L001</b>			

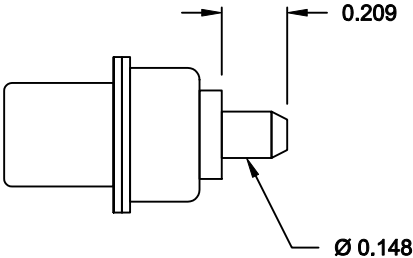


DETAIL A-A  
SHOWN FOR REFERENCE ONLY

NOTE:  
SIGNAL AND POWER CONTACTS  
COME PRE-LOADED INTO INSULATORS





SIGNAL CONTACTS



POWER CONTACTS

RoHS COMPLIANT

	THESE DRAWINGS AND SPECIFICATIONS ARE THE PROPERTY OF NorComp AND SHALL NOT BE REPRODUCED, COPIED OR USED AS THE BASIS FOR THE MANUFACTURE OR SALE OF APPARATUS WITHOUT WRITTEN PERMISSION.	DRAWN: <b>M. SIGMON</b>		DATE: <b>06-11-13</b>		
		CHECKED:		DATE:		
			SCALE: <b>1.5 = 1</b>	SHEET <b>2</b>	OF <b>3</b>	REV <b>0</b>
			DWG NO. <b>681S17W2203L001</b>			

