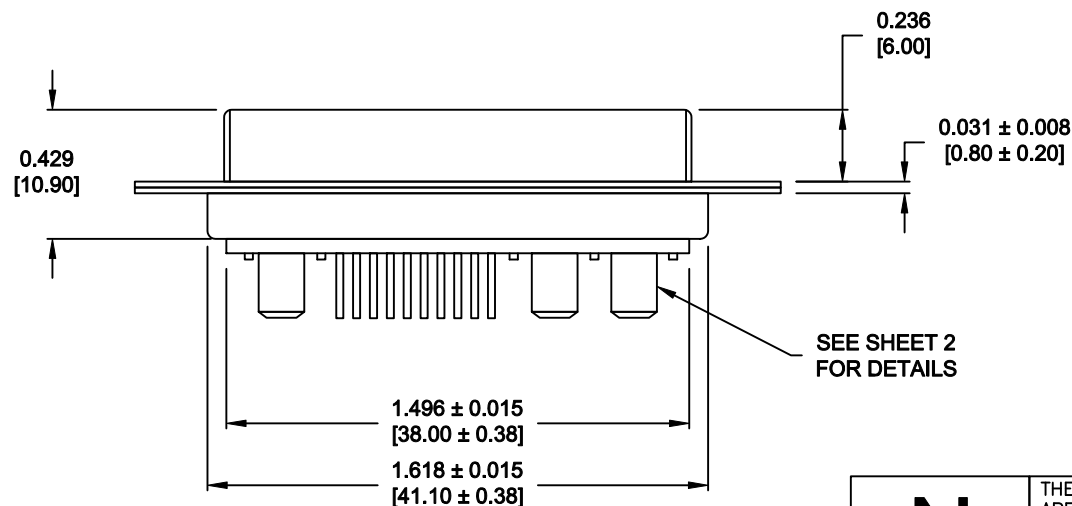
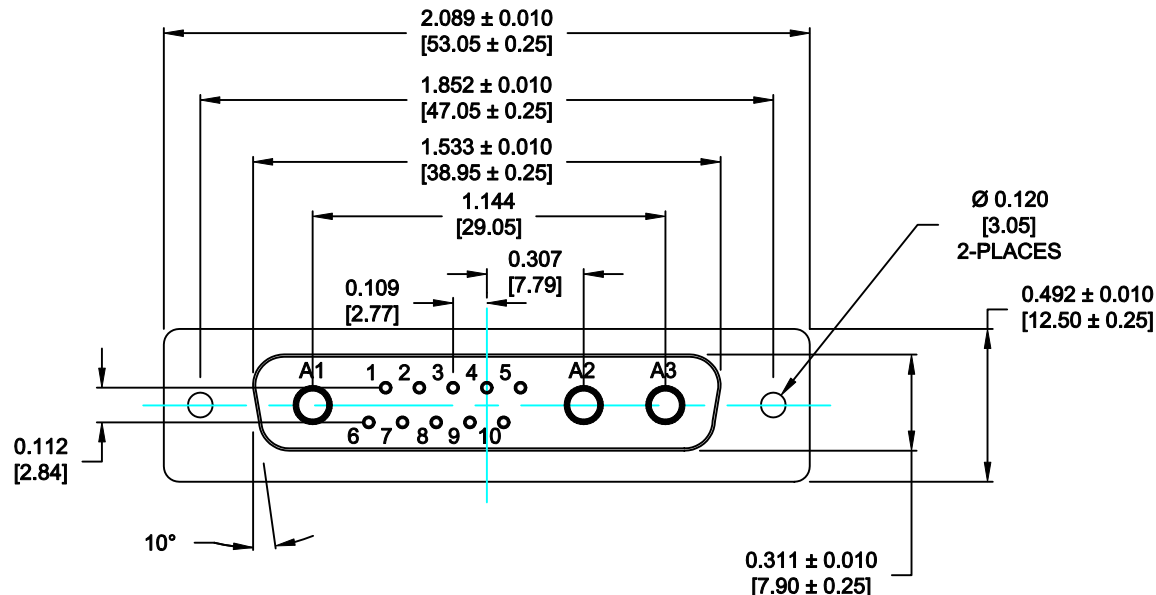


DESCRIPTION: POWER / SIGNAL - VERTICAL BOARD - FEMALE



SPECIFICATIONS:

ELECTRICAL:

INSULATOR RESISTANCE:	5 G OHMS Min.
DIELECTRIC WITHSTANDING:	1,000 VAC for 1 MINUTE.
OPERATING TEMPERATURE:	-55° C ~ +155° C
CONTACT RESISTANCE:	1.0MOHMS Max.
POWER PINS:	SEE PART No. BELOW
SIGNAL PINS:	5 AMPS

MECHANICAL:

CONTACT INSERTION FORCE:	4.5 Kg Max.
CONTACT SEPARATOR FORCE:	0.3Kg Min.

MATERIALS:

CONTACTS:	COPPER ALLOY
INSULATOR:	PBT UL94V-0 RATED, BLACK 230°C PROCESS TEMP.
SHELL:	STEEL
SEAL:	F04 FLEXIBLE ADHESIVE

FINISH:

SHELL:	NICKEL
CONTACTS:	FULL GOLD FLASH

681S13W3203L001

00 = 40 AMPS

MEETS IP67 STANDARDS

(SEE PAGE 2 FOR SEALING DETAILS)

RoHS COMPLIANT

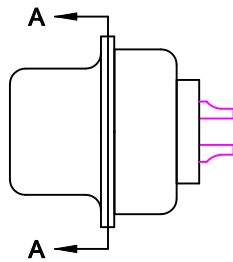


THESE DRAWINGS AND SPECIFICATIONS ARE THE PROPERTY OF NorComp AND SHALL NOT BE REPRODUCED, COPIED OR USED AS THE BASIS FOR THE MANUFACTURE OF SALE OF APPARATUS WITHOUT WRITTEN PERMISSION.

NorComp

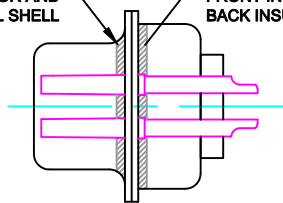
DRAWN: P. JENKINS		DATE: 09-13-11	
CHECKED:		DATE:	
SCALE: N.T.S.	SHEET 1	OF 3	REV 0
DWG NO. 681S13W3203L001			

DESCRIPTION: 681 SERIES CONTACTS



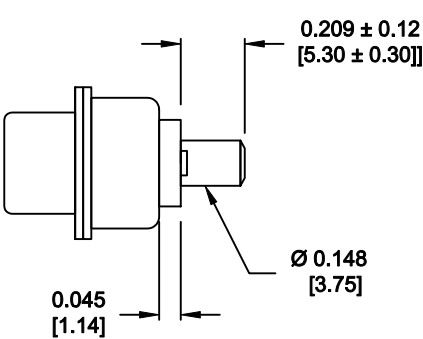
FRONT SEAL APPLIED BETWEEN
FRONT INSULATOR AND
FRONT METAL SHELL

MIDDLE SEAL APPLIED BETWEEN
FRONT INSULATOR AND
BACK INSULATOR

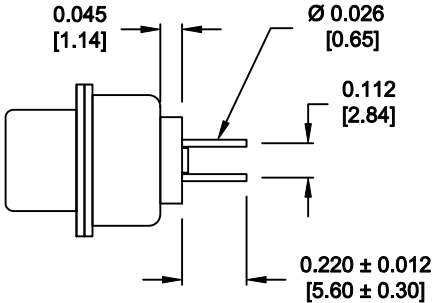


DETAIL A-A
SHOWN FOR REFERENCE ONLY

NOTE: SIGNAL AND POWER CONTACTS
COME PRE-LOADED INTO INSULATORS



POWER CONTACTS



SIGNAL CONTACTS

RoHS COMPLIANT



THESE DRAWINGS AND SPECIFICATIONS
ARE THE PROPERTY OF NorComp AND
SHALL NOT BE REPRODUCED, COPIED
OR USED AS THE BASIS FOR THE
MANUFACTURE OF SALE OF APPARATUS
WITHOUT WRITTEN PERMISSION.

DRAWN:
P. JENKINS

DATE:
09-13-11

CHECKED:

DATE:

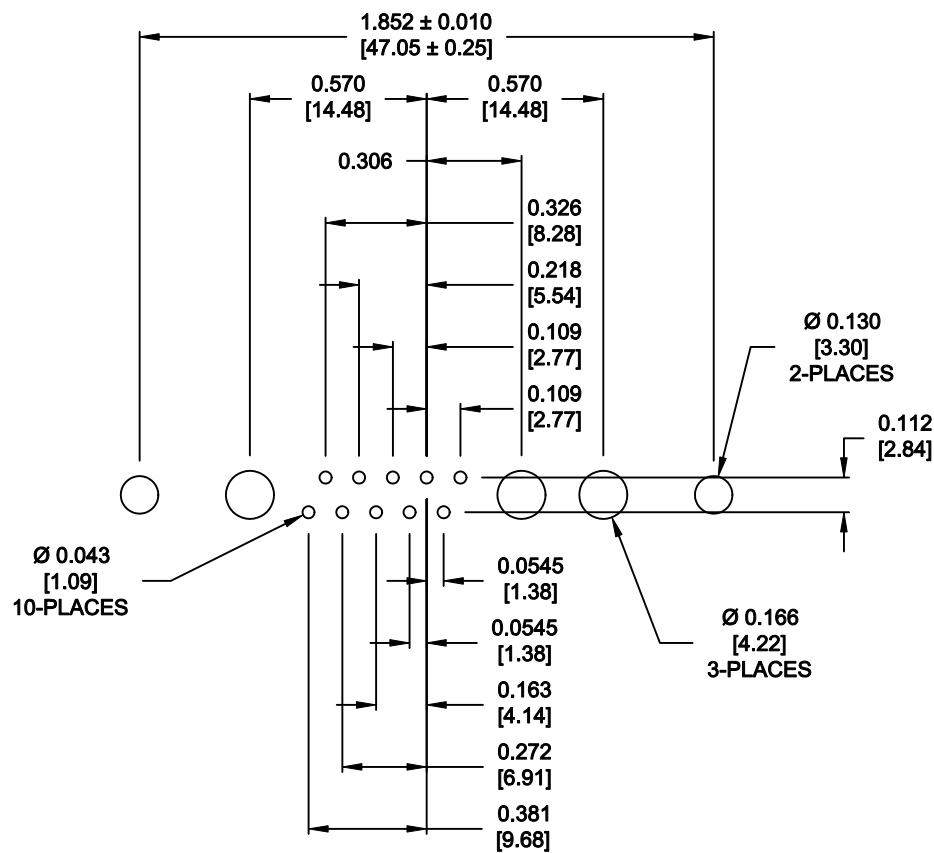
SCALE:
N.T.S.

SHEET
2 OF
3

REV
0

DWG NO. **681S13W3203L001**

NorComp



RECOMMENDED PCB LAYOUT
TOLERANCE ± 0.002 [0.05]



THESE DRAWINGS AND SPECIFICATIONS ARE THE PROPERTY OF NorComp AND SHALL NOT BE REPRODUCED, COPIED OR USED AS THE BASIS FOR THE MANUFACTURE OF SALE OF APPARATUS WITHOUT WRITTEN PERMISSION.

NorComp

DRAWN: **P. JENKINS**

DATE: **09-13-11**

CHECKED:

DATE:

SCALE: **N.T.S.**

SHEET **3** OF **3**

REV **0**

DWG NO. **681S13W3203L001**