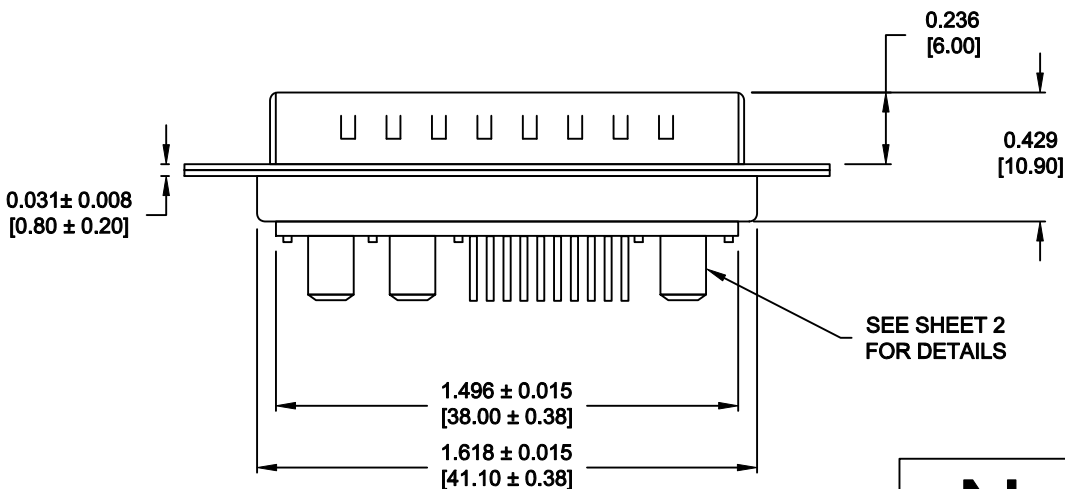
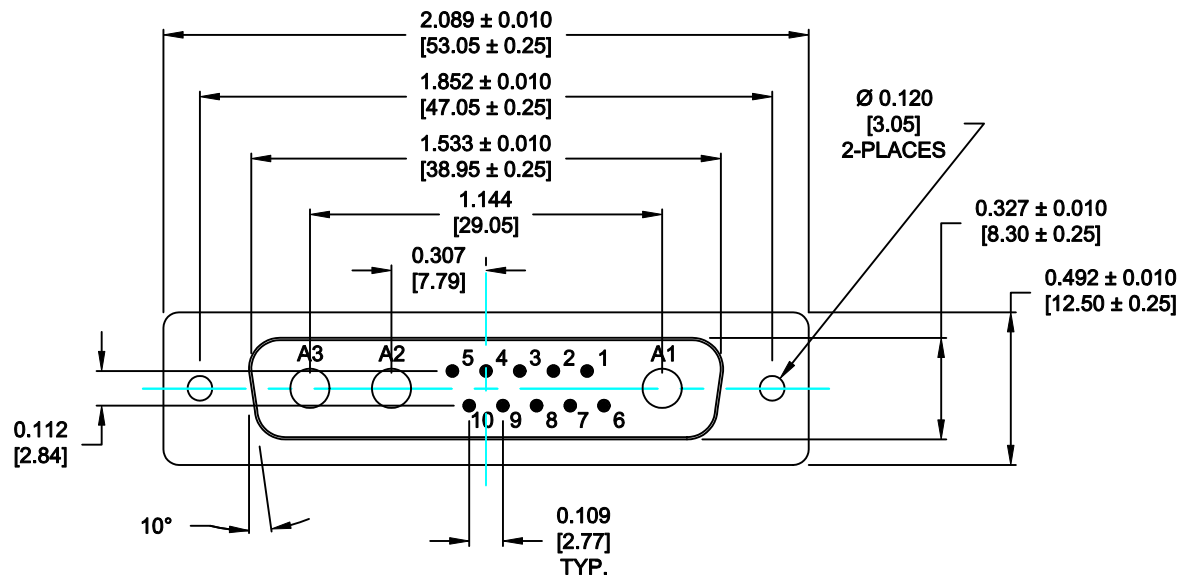


DESCRIPTION: POWER / SIGNAL - VERTICAL BOARD - MALE - MACHINED



SPECIFICATIONS:

ELECTRICAL:

INSULATOR RESISTANCE:	5 G OHMS Min.
DIELECTRIC WITHSTANDING:	1,000VAC r.m.s.
OPERATING TEMPERATURE:	-55° C ~ +155° C
POWER CONTACT RESISTANCE:	1.0 Milliohms Max.
SIGNAL CONTACT RESISTANCE:	2.7 Milliohms Max.
POWER PINS:	40 AMPS
SIGNAL PINS:	5 AMPS

MECHANICAL:

CONTACT INSERTION FORCE:	4.5 Kg Max.
CONTACT SEPARATOR FORCE:	0.3Kg Min.

MATERIALS:

CONTACTS:	COPPER ALLOY
INSULATOR:	PBT UL94V-0 RATED, BLK
SHELL:	STEEL
SEAL:	F08 FLEXIBLE ADHESIVE

FINISH:

SHELL:	NICKEL
CONTACTS:	FULL GOLD FLASH

681S13W3103L001

00 = 40 AMPS

MEETS IP67 STANDARDS

(SEE PAGE 2 FOR SEALING DETAILS)

RoHS COMPLIANT

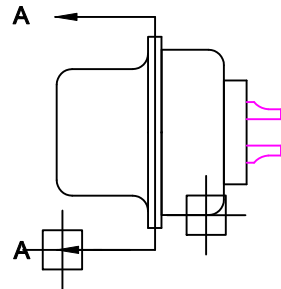


THESE DRAWINGS AND SPECIFICATIONS ARE THE PROPERTY OF NorComp AND SHALL NOT BE REPRODUCED, COPIED OR USED AS THE BASIS FOR THE MANUFACTURE OF SALE OF APPARATUS WITHOUT WRITTEN PERMISSION.

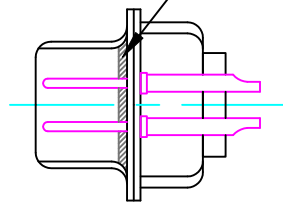
NorComp

DRAWN:	P.JENKINS	DATE:	09-13-11
CHECKED:		DATE:	
SCALE:	N.T.S.	SHEET	OF
		1	3
DWG NO.	681S13W3103L001	REV	0

DESCRIPTION: 681 SERIES CONTACTS

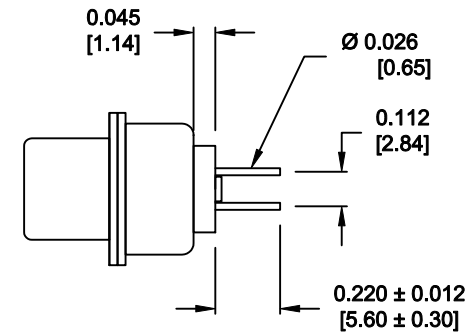


FRONT SEAL APPLIED OVER INSULATOR
AND BETWEEN FRONT & REAR SHELLS

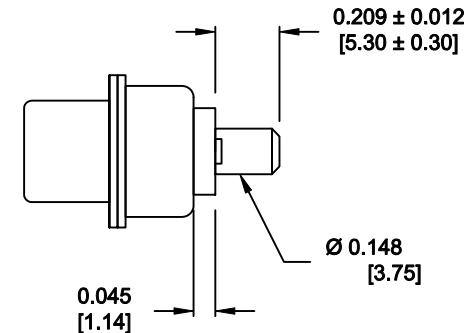


DETAIL A-A
SHOWN FOR REFERENCE ONLY

NOTE: SIGNAL AND POWER CONTACTS
COME PRE-LOADED INTO INSULATORS



SIGNAL CONTACTS



POWER CONTACTS

RoHS COMPLIANT



THESE DRAWINGS AND SPECIFICATIONS
ARE THE PROPERTY OF NorComp AND
SHALL NOT BE REPRODUCED, COPIED
OR USED AS THE BASIS FOR THE
MANUFACTURE OF SALE OF APPARATUS
WITHOUT WRITTEN PERMISSION.

DRAWN:
P. JENKINS

DATE:
09-13-11

CHECKED:

DATE:

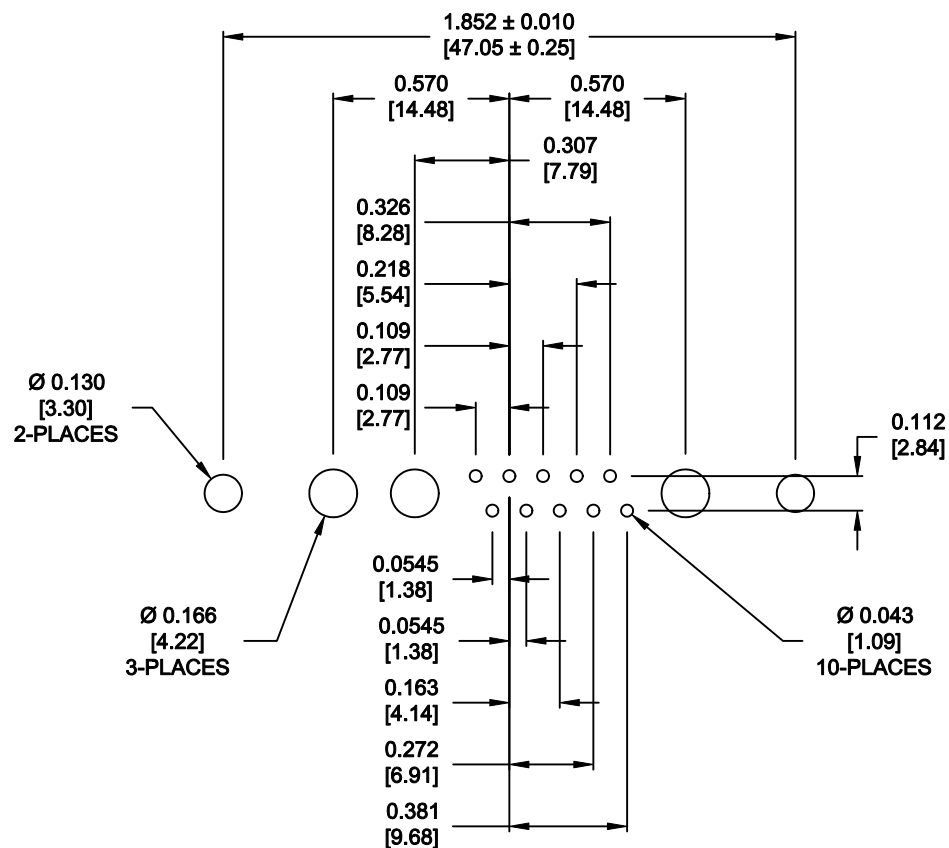
NorComp

SCALE:
N.T.S.

SHEET **2** OF **3**

REV
0

DWG NO. **681S13W3103L001**



RECOMMENDED PCB LAYOUT
TOLERANCE ± 0.002 [0.050]



THESE DRAWINGS AND SPECIFICATIONS
ARE THE PROPERTY OF NorComp AND
SHALL NOT BE REPRODUCED, COPIED
OR USED AS THE BASIS FOR THE
MANUFACTURE OF SALE OF APPARATUS
WITHOUT WRITTEN PERMISSION.

NorComp

DRAWN: **P. JENKINS**

DATE: **09-13-11**

CHECKED:

DATE:

SCALE: **N.T.S.**

SHEET **3** OF **3**

REV **0**

DWG NO. **681S13W3103L001**