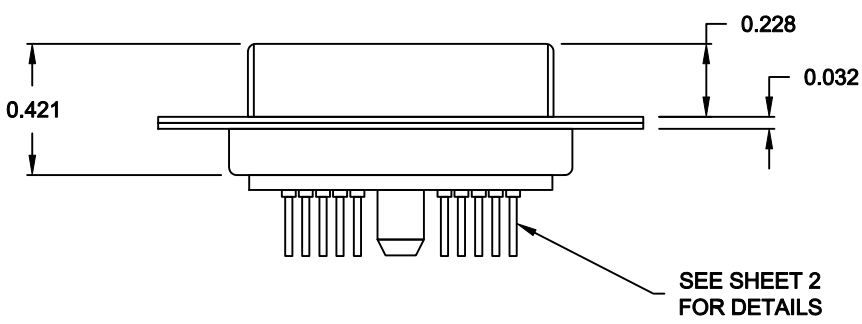
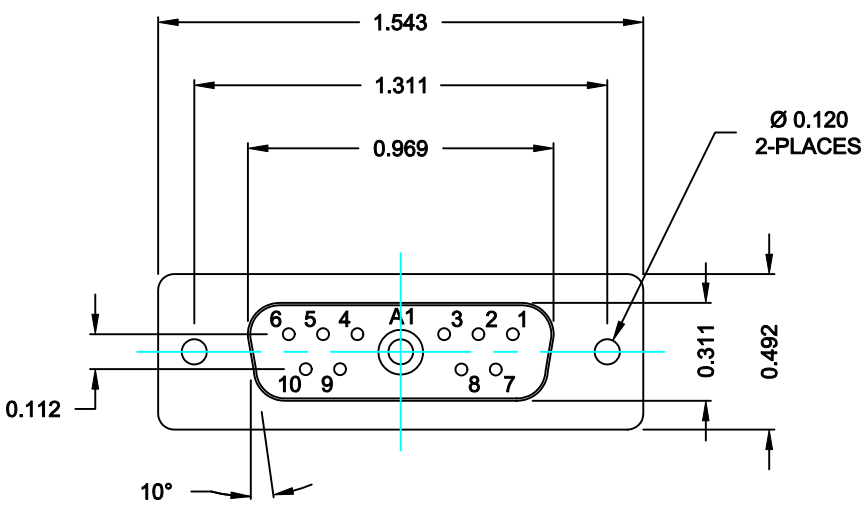


SPECIFICATIONS:

ELECTRICAL:	
INSULATOR RESISTANCE:	5 GOHMS Min.
DIELECTRIC WITHSTANDING:	1,000 VAC for 1 MINUTE
OPERATING TEMPERATURE:	-55° C ~ +155° C
CONTACT RESISTANCE:	1.0 mOHMS Max.
POWER PINS:	SEE PART No. BELOW
SIGNAL PINS:	5 AMPS
MECHANICAL:	
CONTACT INSERTION FORCE:	4.5 Kg Max.
CONTACT SEPARATOR FORCE:	0.3Kg Min.
MATERIALS:	
CONTACTS:	COPPER ALLOY
INSULATOR:	PBT UL94V-0 RATED, BLACK
	230°C PROCESS TEMP.
SHELL:	STEEL
SEAL:	F04 FLEXIBLE ADHESIVE
FINISH:	
SHELL:	NICKEL
CONTACTS:	FULL GOLD FLASH




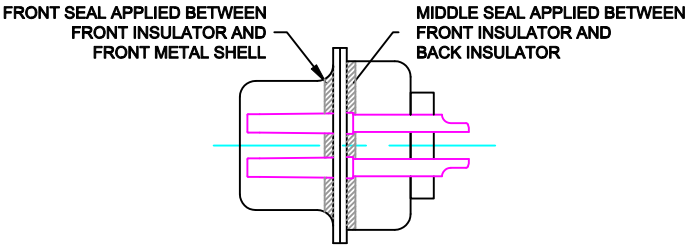
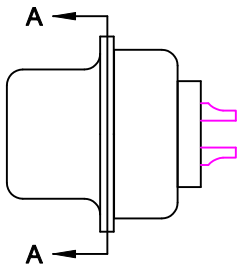
681S11W1203L001

00 = 20 / 40 AMPS

MEETS IP67 STANDARDS
(SEE PAGE 2 FOR SEALING DETAILS)

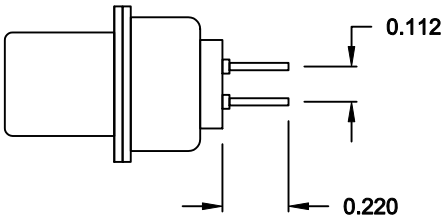
RoHS COMPLIANT

	THESE DRAWINGS AND SPECIFICATIONS ARE THE PROPERTY OF NorComp AND SHALL NOT BE REPRODUCED, COPIED OR USED AS THE BASIS FOR THE MANUFACTURE OF SALE OF APPARATUS WITHOUT WRITTEN PERMISSION.	DRAWN: M. SIGMON		DATE: 06-11-13	
		CHECKED: X		DATE: X	
NorComp	SCALE: N.T.S.		SHEET 1 OF 3		REV 0
	DWG NO. 681S11W1203L001				

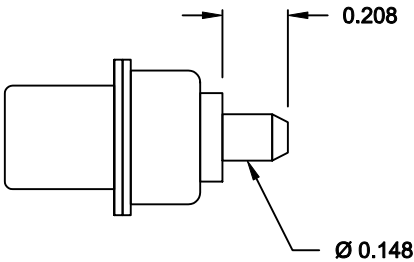


DETAIL A-A
SHOWN FOR REFERENCE ONLY

NOTE:
SIGNAL AND POWER CONTACTS
COME PRE-LOADED INTO INSULATORS



SIGNAL CONTACTS



POWER CONTACTS

RoHS COMPLIANT



THESE DRAWINGS AND SPECIFICATIONS
ARE THE PROPERTY OF NorComp AND
SHALL NOT BE REPRODUCED, COPIED
OR USED AS THE BASIS FOR THE
MANUFACTURE OF SALE OF APPARATUS
WITHOUT WRITTEN PERMISSION.

DRAWN:
M. SIGMON

DATE:
06-11-13

CHECKED:
X

DATE:
X

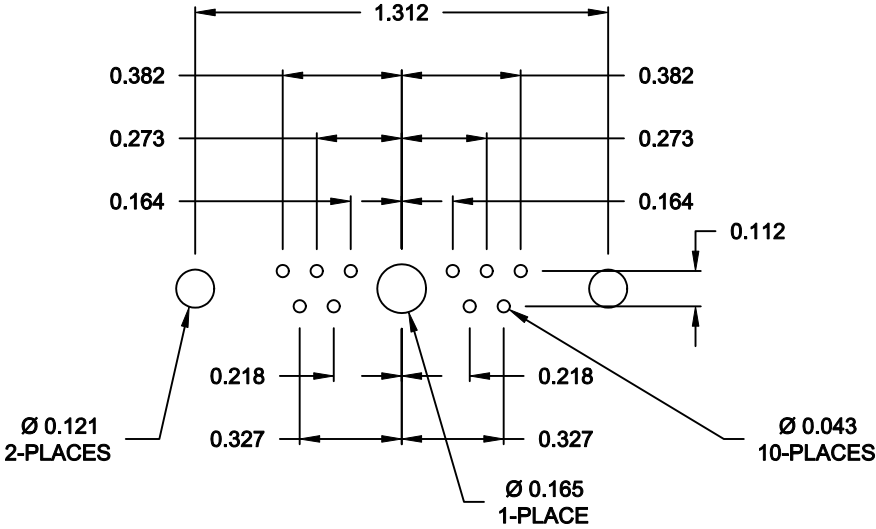
NorComp

SCALE:
N.T.S.

SHEET
2 OF
3


REV
0

DWG NO. **681S11W1203L001**



RECOMMENDED PCB LAYOUT

RoHS COMPLIANT

	THESE DRAWINGS AND SPECIFICATIONS ARE THE PROPERTY OF NorComp AND SHALL NOT BE REPRODUCED, COPIED OR USED AS THE BASIS FOR THE MANUFACTURE OF SALE OF APPARATUS WITHOUT WRITTEN PERMISSION.	DRAWN: M. SIGMON		DATE: 06-11-13	
		CHECKED: X		DATE: X	
NorComp		SCALE: N.T.S.	SHEET 3 OF 3		REV 0
		DWG NO. 681S11W1203L001			