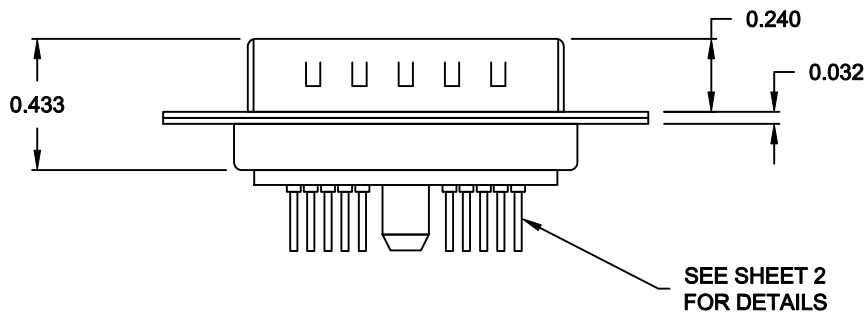
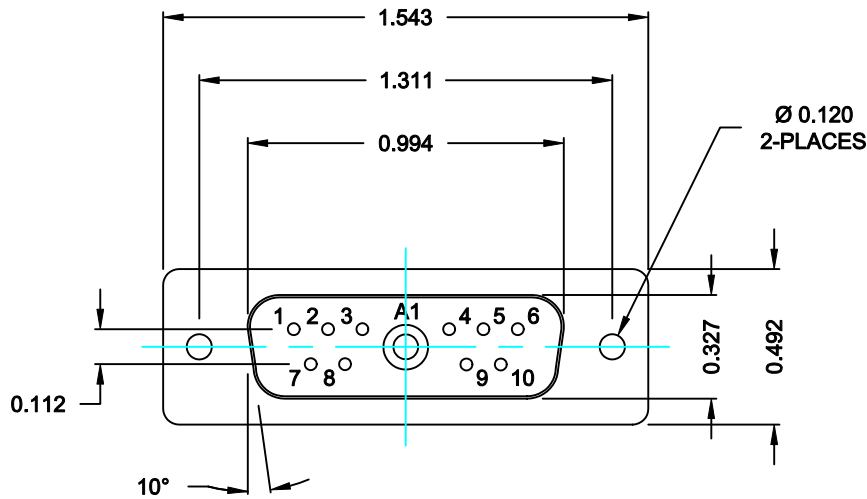


SPECIFICATIONS:

ELECTRICAL:	
INSULATOR RESISTANCE:	5 G OHMS Min.
DIELECTRIC WITHSTANDING:	1,000VAC r.m.s.
OPERATING TEMPERATURE:	-55° C ~ +155° C
POWER CONTACT RESISTANCE:	1.0 Milliohms Max.
SIGNAL CONTACT RESISTANCE:	2.7 Milliohms Max.
POWER PINS:	40 AMPS
SIGNAL PINS:	5 AMPS
MECHANICAL:	
CONTACT INSERTION FORCE:	4.5 Kg Max.
CONTACT SEPARATOR FORCE:	0.3Kg Min.
MATERIALS:	
CONTACTS:	COPPER ALLOY
INSULATOR:	PBT UL94V-0 RATED, BLK 230°C PROCESS TEMP.
SHELL:	STEEL
SEAL:	F08 FLEXIBLE ADHESIVE
FINISH:	
SHELL:	NICKEL
CONTACTS:	FULL GOLD FLASH




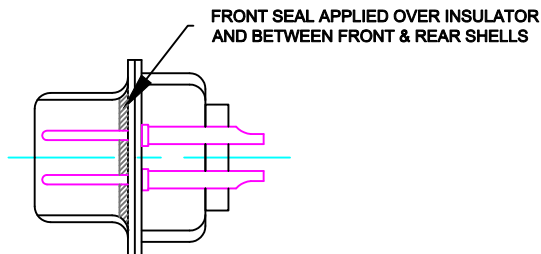
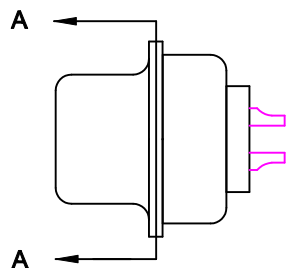
681S11W1103L001

00 = 20 / 40 AMPS

MEETS IP67 STANDARDS
(SEE PAGE 2 FOR SEALING DETAILS)

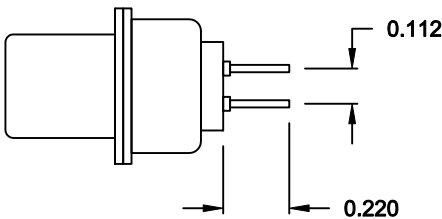
RoHS COMPLIANT

	THESE DRAWINGS AND SPECIFICATIONS ARE THE PROPERTY OF NorComp AND SHALL NOT BE REPRODUCED, COPIED OR USED AS THE BASIS FOR THE MANUFACTURE OF SALE OF APPARATUS WITHOUT WRITTEN PERMISSION.	DRAWN: M. SIGMON		DATE: 06-11-13		
		CHECKED: X		DATE: X		
NorComp	SCALE: N.T.S.		SHEET 1		OF 3	REV 0
	DWG NO. 681S11W1103L001					

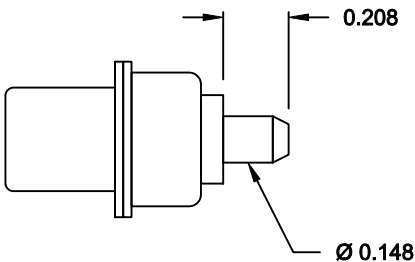


DETAIL A-A
SHOWN FOR REFERENCE ONLY

NOTE:
SIGNAL AND POWER CONTACTS
COME PRE-LOADED INTO INSULATORS




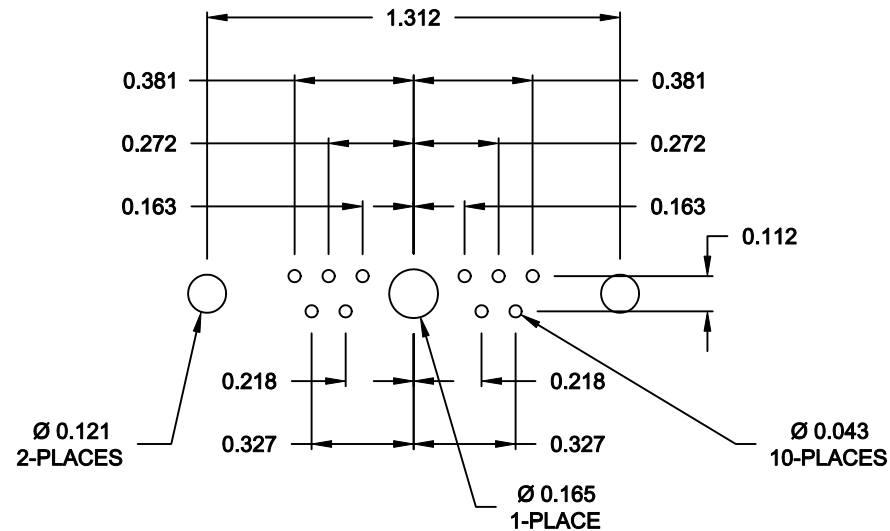
SIGNAL CONTACTS



POWER CONTACTS


RoHS COMPLIANT

	THESE DRAWINGS AND SPECIFICATIONS ARE THE PROPERTY OF NorComp AND SHALL NOT BE REPRODUCED, COPIED OR USED AS THE BASIS FOR THE MANUFACTURE OF SALE OF APPARATUS WITHOUT WRITTEN PERMISSION.	DRAWN: M. SIGMON		DATE: 06-11-13		
		CHECKED: X		DATE: X		
NorComp		SCALE: N.T.S.	SHEET 2		OF 3	REV 0
		DWG NO. 681S11W1103L001				



RECOMMENDED PCB LAYOUT

RoHS COMPLIANT

	THESE DRAWINGS AND SPECIFICATIONS ARE THE PROPERTY OF NorComp AND SHALL NOT BE REPRODUCED, COPIED OR USED AS THE BASIS FOR THE MANUFACTURE OF SALE OF APPARATUS WITHOUT WRITTEN PERMISSION.	DRAWN: M. SIGMON		DATE: 06-11-13	
		CHECKED: X		DATE: X	
NorComp		SCALE: N.T.S.	SHEET 3		OF 3
		REV 0			
		DWG NO. 681S11W1103L001			

NorComp