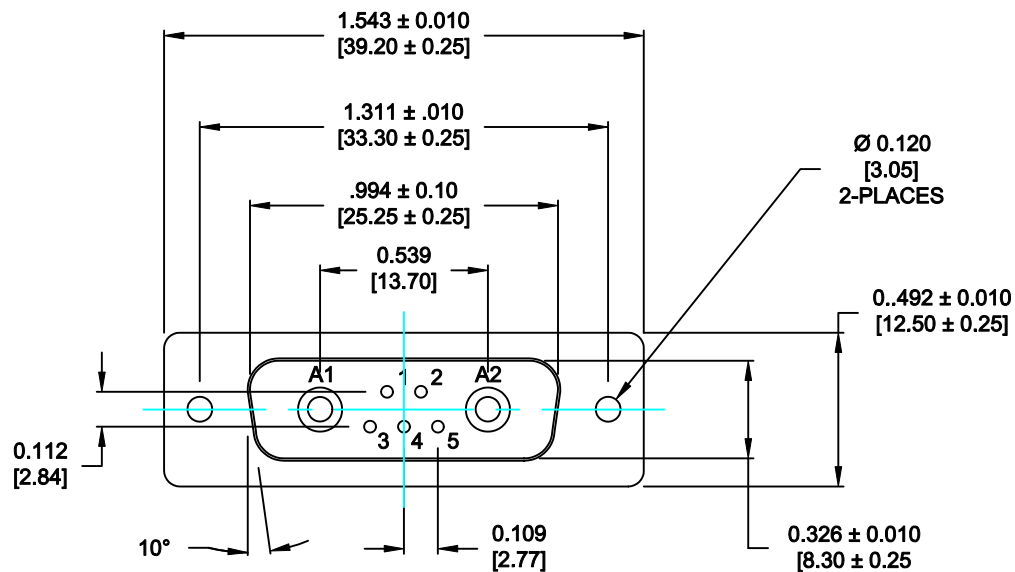


DESCRIPTION: POWER / SIGNAL - SOLDER CUP - MALE - MACHINED



SPECIFICATIONS:

ELECTRICAL:

INSULATOR RESISTANCE:	5 G OHMS Min.
DIELECTRIC WITHSTANDING:	1,000VAC r.m.s.
OPERATING TEMPERATURE:	-55° C ~ +155° C
POWER CONTACT RESISTANCE:	1.0 Milliohms Max.
SIGNAL CONTACT RESISTANCE:	2.7 Milliohms Max.
POWER PINS:	SEE PART No. BELOW
SIGNAL PINS:	5 AMPS

MECHANICAL:

CONTACT INSERTION FORCE:	4.5 Kg Max.
CONTACT SEPARATOR FORCE:	0.3Kg Min.

MATERIALS:

CONTACTS:	COPPER ALLOY
INSULATOR:	PBT UL94V-0 RATED, BLK
	230°C PROCESS TEMP.
SHELL:	STEEL
SEAL:	F08 FLEXIBLE ADHESIVE

FINISH:

SHELL:	NICKEL
CONTACTS:	FULL GOLD FLASH


680S7W2103LYY1

20 = 20 AMPS
40 = 40 AMPS

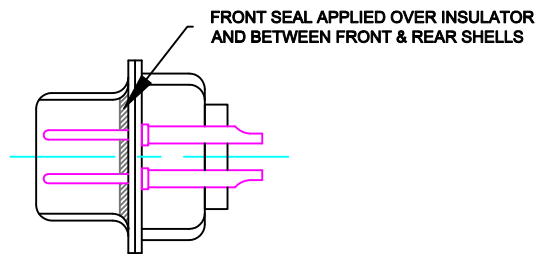
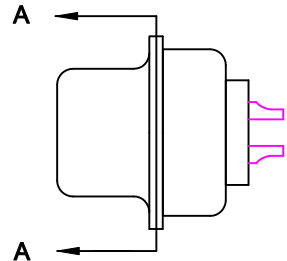
MEETS IP67 STANDARDS

(SEE PAGE 2 FOR SEALING DETAILS)

RoHS COMPLIANT

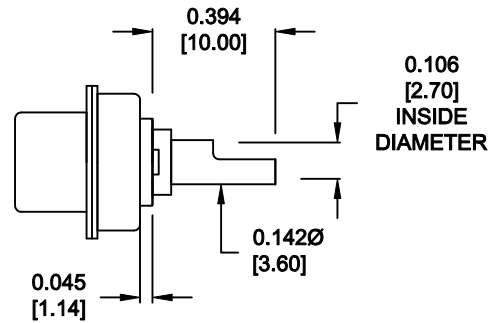
	THESE DRAWINGS AND SPECIFICATIONS ARE THE PROPERTY OF NorComp AND SHALL NOT BE REPRODUCED, COPIED OR USED AS THE BASIS FOR THE MANUFACTURE OF SALE OF APPARATUS WITHOUT WRITTEN PERMISSION.	DRAWN: P. JENKINS		DATE: 09-13-11		
		CHECKED: X		DATE: X		
NorComp			SCALE: N.T.S.	SHEET 1	OF 2	REV 0
			DWG NO. 680S7W2103LYY1			

DESCRIPTION: 680 SERIES CONTACTS

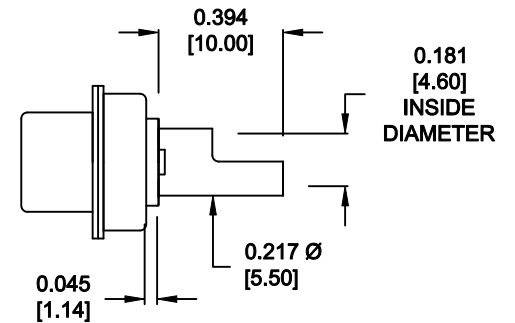


DETAIL A-A
SHOWN FOR REFERENCE ONLY

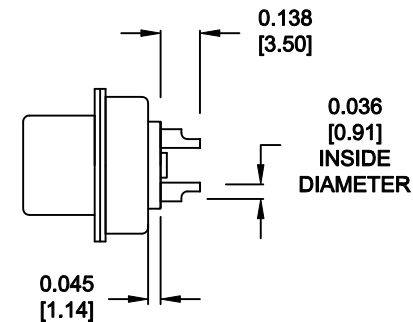
NOTE: SIGNAL AND POWER CONTACTS
COME PRE-LOADED INTO INSULATORS



20 AMP POWER CONTACTS
ACCEPTS UP TO 12 AWG WIRE



40 AMP POWER CONTACTS
ACCEPTS UP TO 8 AWG WIRE



SIGNAL CONTACTS
ACCEPTS UP TO 20 AWG WIRE

RoHS COMPLIANT



THESE DRAWINGS AND SPECIFICATIONS
ARE THE PROPERTY OF NorComp AND
SHALL NOT BE REPRODUCED, COPIED
OR USED AS THE BASIS FOR THE
MANUFACTURE OF SALE OF APPARATUS
WITHOUT WRITTEN PERMISSION.

NorComp

DRAWN:
P. JENKINS

DATE:
09-13-11

CHECKED:
X

DATE:
X

SCALE:
N.T.S.

SHEET 2 OF 2

REV
0

DWG NO. 680M7W2103LYY1