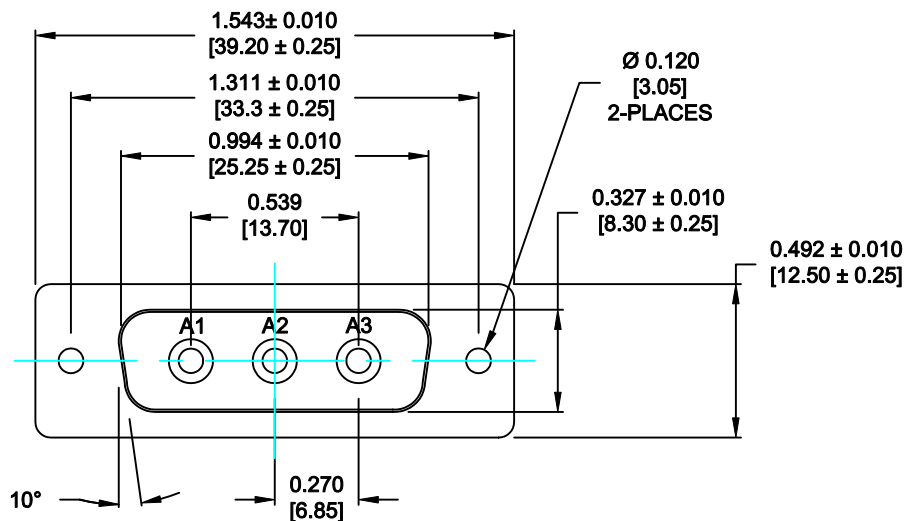


DESCRIPTION: POWER - SOLDER CUP - MALE - MACHINED - SEALED



**SPECIFICATIONS:**

**ELECTRICAL:**

INSULATOR RESISTANCE: 5 GOHMS Min.  
 DIELECTRIC WITHSTANDING: 1,000VAC r.m.s.  
 OPERATING TEMPERATURE: -55° C ~ +155° C  
 CONTACT RESISTANCE: 1.0 MillioHMS Max.  
 POWER PINS: SEE PART No. BELOW

**MECHANICAL:**

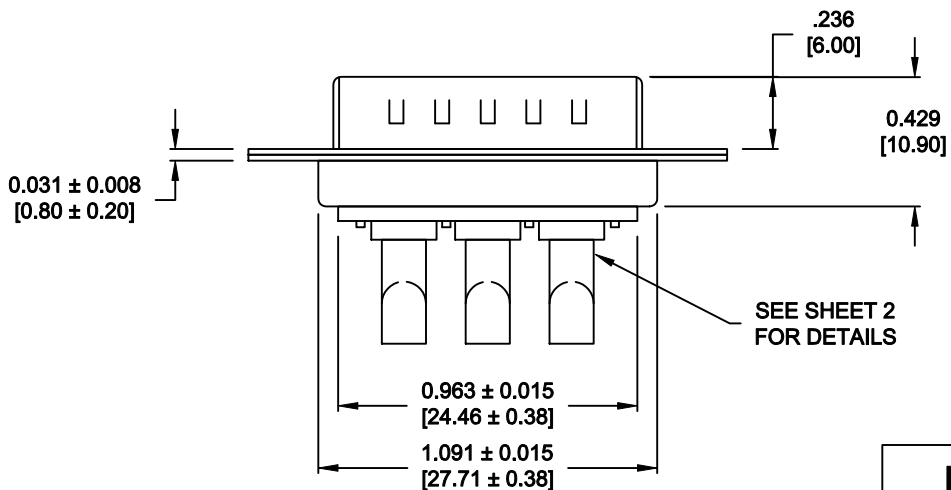
CONTACT INSERTION FORCE: 4.5 Kg Max.  
 CONTACT SEPARATOR FORCE: 0.3Kg Min.

**MATERIALS:**

CONTACTS: COPPER ALLOY  
 INSULATOR: PBT UL94V-0 RATED, BLK 230°C PROCESS TEMP.  
 SHELL: STEEL  
 SEAL: F08 FLEXIBLE ADHESIVE

**FINISH:**

SHELL: NICKEL  
 CONTACTS: FULL GOLD FLASH




**680S3W3103LYY1**

20 = 20 AMPS  
 40 = 40 AMPS

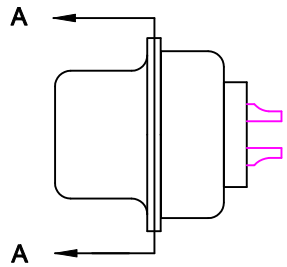
**MEETS IP67 STANDARDS**

(SEE PAGE 2 FOR SEALING DETAILS)

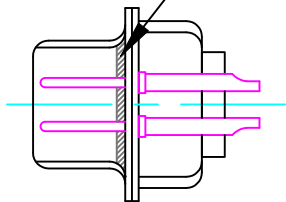
**RoHS COMPLIANT**

|  |   |                               |                             |                          |
|--|---|-------------------------------|-----------------------------|--------------------------|
|  | THESE DRAWINGS AND SPECIFICATIONS ARE THE PROPERTY OF NorComp AND SHALL NOT BE REPRODUCED, COPIED OR USED AS THE BASIS FOR THE MANUFACTURE OF SALE OF APPARATUS WITHOUT WRITTEN PERMISSION. |                               | DRAWN:<br><b>P. JENKINS</b> | DATE:<br><b>09-13-11</b> |
|  |   |                               | CHECKED:<br><b>X</b>        | DATE:<br><b>X</b>        |
| <h1>NorComp</h1>   |   | SCALE:<br><b>N.T.S.</b>       | SHEET OF<br><b>1 2</b>      | REV<br><b>0</b>          |
|  |   | DWG NO. <b>680S3W3103LYY1</b> |                             |                          |

DESCRIPTION: 680 SERIES CONTACTS

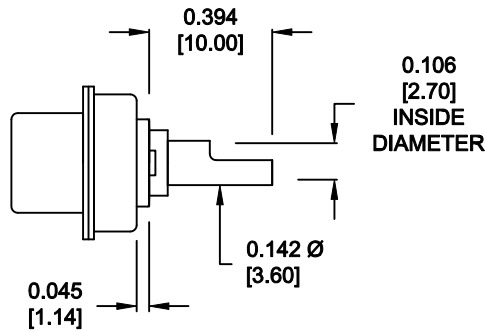


FRONT SEAL APPLIED OVER INSULATOR AND BETWEEN FRONT & REAR SHELLS

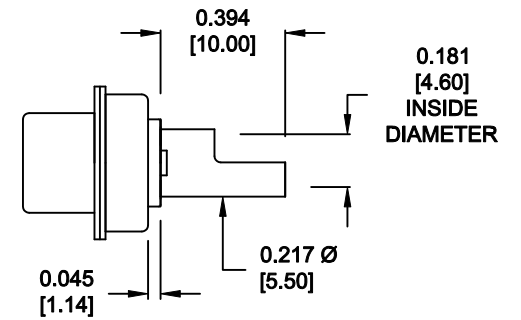


DETAIL A-A  
SHOWN FOR REFERENCE ONLY

**NOTE:  
POWER CONTACTS COME  
PRE-LOADED INTO INSULATORS**




**20 AMP POWER CONTACTS  
ACCEPTS UP TO 12 AWG WIRE**



**40 AMP POWER CONTACTS  
ACCEPTS UP TO 8 AWG WIRE**

**RoHS COMPLIANT**

|  |   |                               |                             |                          |
|--|---|-------------------------------|-----------------------------|--------------------------|
|  | THESE DRAWINGS AND SPECIFICATIONS ARE THE PROPERTY OF NorComp AND SHALL NOT BE REPRODUCED, COPIED OR USED AS THE BASIS FOR THE MANUFACTURE OF SALE OF APPARATUS WITHOUT WRITTEN PERMISSION. |                               | DRAWN:<br><b>P. JENKINS</b> | DATE:<br><b>09-13-11</b> |
|  |   |                               | CHECKED:<br><b>X</b>        | DATE:<br><b>X</b>        |
| <b>NorComp</b>   |   | SCALE:<br><b>N.T.S.</b>       | SHEET OF<br><b>2 2</b>      | REV<br><b>0</b>          |
|  |   | DWG NO. <b>680S3W3103LYY1</b> |                             |                          |