

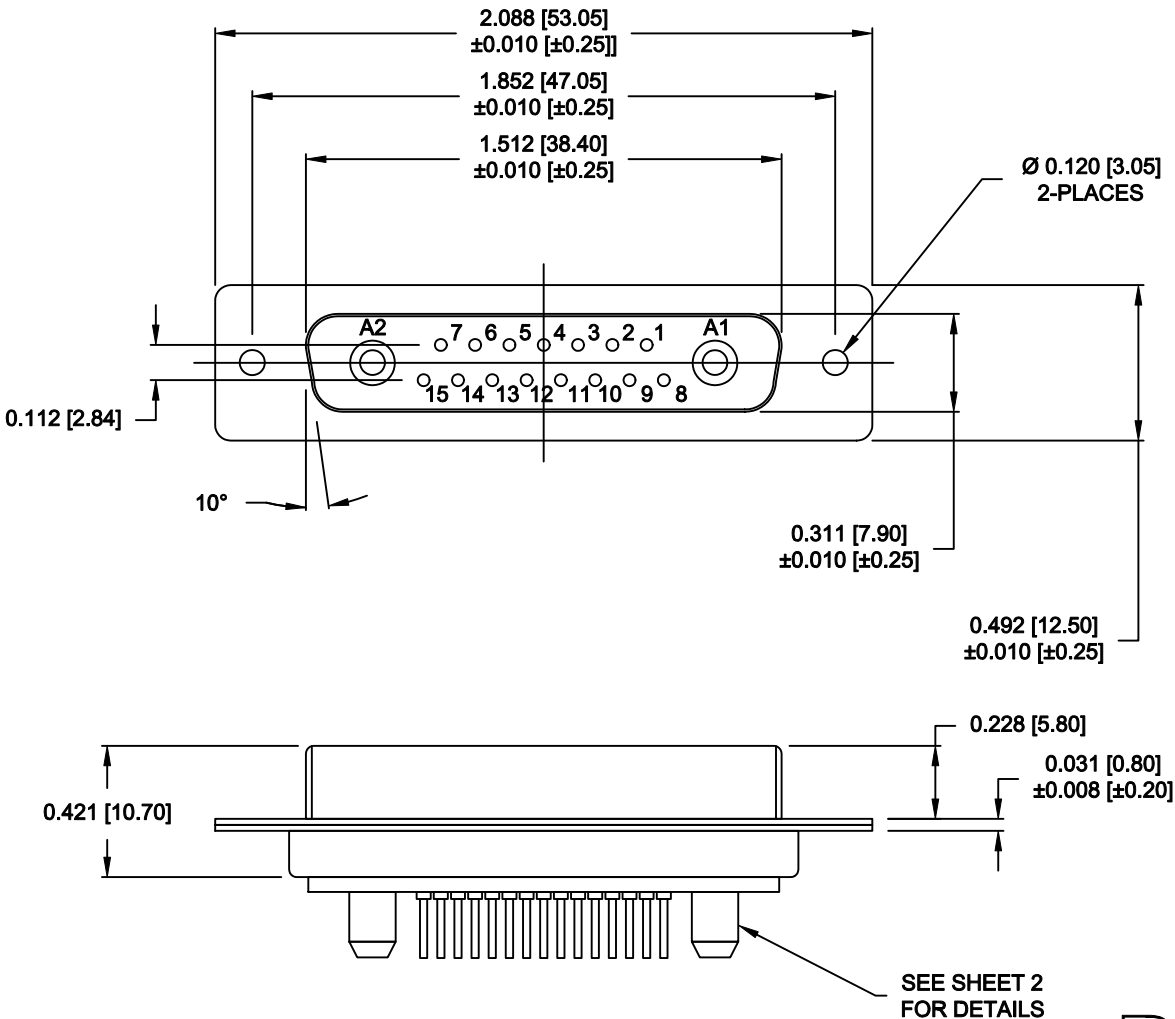
SPECIFICATIONS:

ELECTRICAL:
INSULATOR RESISTANCE: 5 G OHMS Min.
DIELECTRIC WITHSTANDING: 1,000 VAC for 1 MINUTE.
OPERATING TEMPERATURE: -55° C ~ +125° C
SIGNAL CONTACT RESISTANCE: 2.7 Milliohms Max.
POWER CONTACT RESISTANCE: 1.0 Milliohms Max.
POWER PINS: SEE PART No. BELOW
SIGNAL PINS: 5 AMPS

MECHANICAL:
CONTACT INSERTION FORCE: 4.5 Kg Max.
CONTACT SEPARATOR FORCE: 0.3Kg Min.

MATERIALS:
CONTACTS: COPPER ALLOY
INSULATOR: PBT UL94V-0 RATED, BLACK
SHELL: 230°C PROCESS TEMP.
STEEL


FINISH:
SHELL: NICKEL
CONTACTS: FULL GOLD FLASH



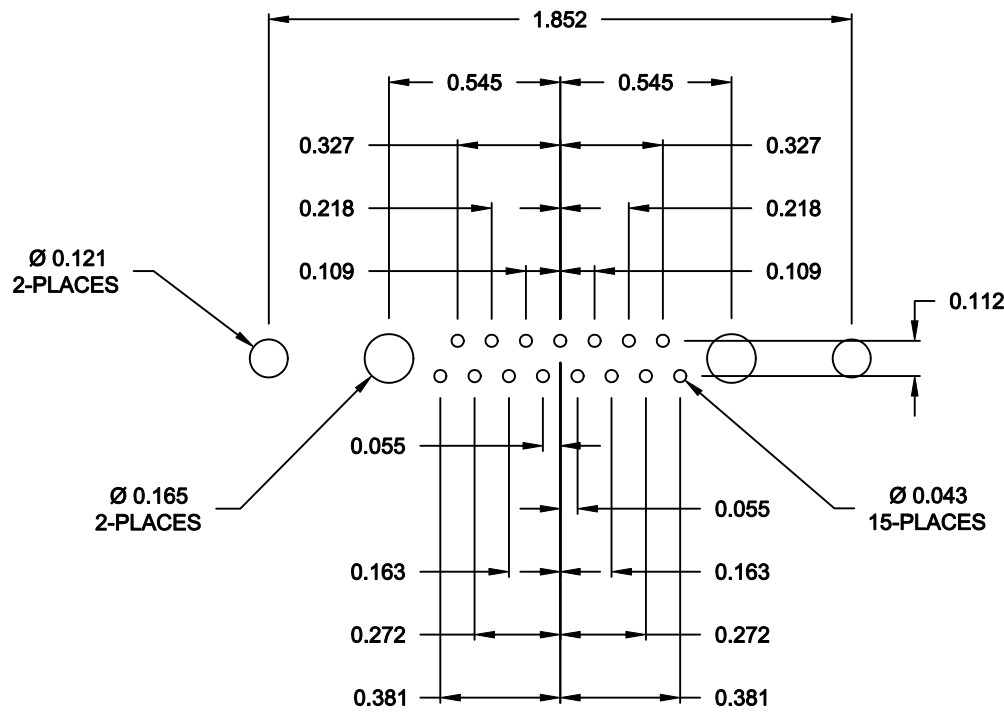
681M17W2203L001

00 = 20 / 40 AMPS

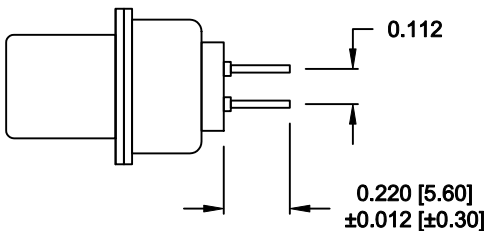
RoHS COMPLIANT

	THESE DRAWINGS AND SPECIFICATIONS ARE THE PROPERTY OF NorComp AND SHALL NOT BE REPRODUCED, COPIED OR USED AS THE BASIS FOR THE MANUFACTURE OR SALE OF APPARATUS WITHOUT WRITTEN PERMISSION.	DRAWN: M. SIGMON		DATE: 07-18-13	
		CHECKED:		DATE:	
		SCALE: 1.5 = 1	SHEET 1 OF 2		REV 0
NorComp		DWG NO. 681M17W2203L001			

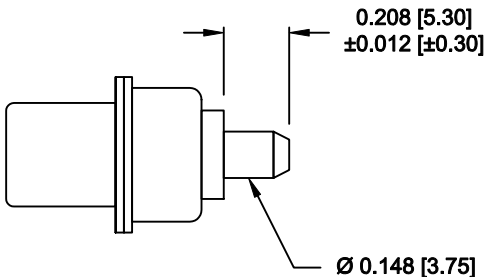
NOTE:
SIGNAL AND POWER CONTACTS
COME PRE-LOADED INTO INSULATORS



RECOMMENDED PCB LAYOUT




SIGNAL CONTACTS



POWER CONTACTS

RoHS COMPLIANT

	THESE DRAWINGS AND SPECIFICATIONS ARE THE PROPERTY OF NorComp AND SHALL NOT BE REPRODUCED, COPIED OR USED AS THE BASIS FOR THE MANUFACTURE OR SALE OF APPARATUS WITHOUT WRITTEN PERMISSION.	DRAWN: M. SIGMON		DATE: 07-18-13	
		CHECKED:		DATE:	
NorComp	SCALE: 1.5 = 1	SHEET 2 OF 2			REV 0
	DWG NO. 681M17W2203L001				