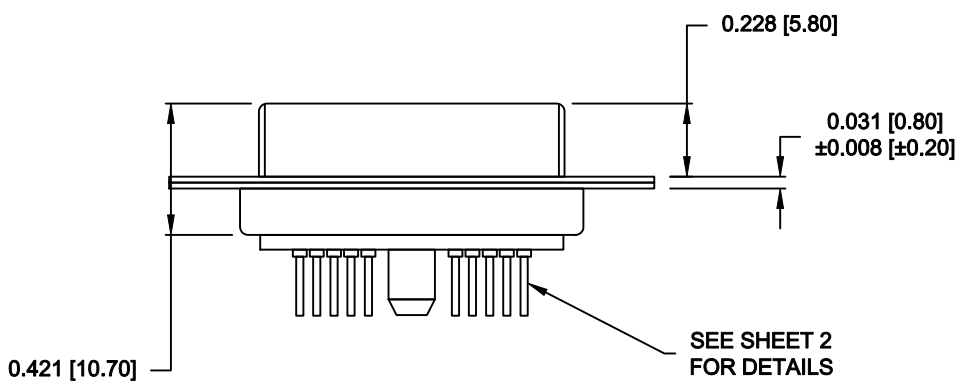
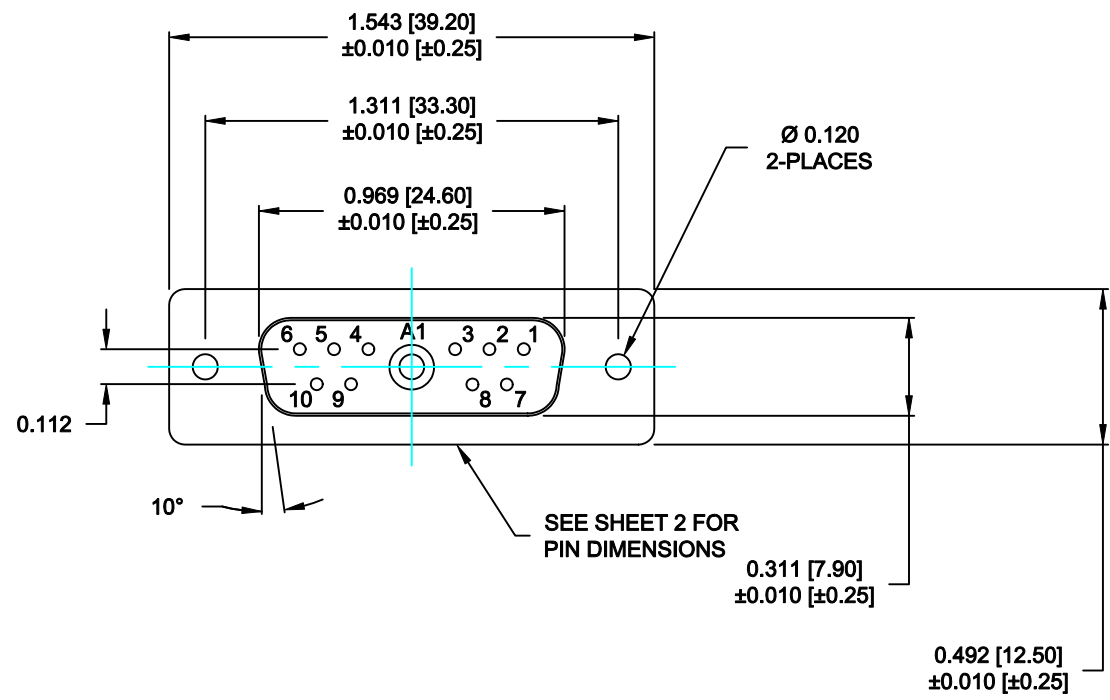



SPECIFICATIONS:

ELECTRICAL:	
INSULATOR RESISTANCE:	5 GOHMS Min.
DIELECTRIC WITHSTANDING:	1,000VAC r.m.s.
OPERATING TEMPERATURE:	-55° C ~ +125° C
SIGNAL CONTACT RESISTANCE:	2.7 Milliohms Max.
POWER CONTACT RESISTANCE:	1.0 Milliohms Max.
POWER PINS:	SEE PART No. BELOW
SIGNAL PINS:	5 AMPS
MECHANICAL:	
CONTACT INSERTION FORCE:	4.5 Kg Max.
CONTACT SEPARATOR FORCE:	0.3Kg Min.
MATERIALS:	
CONTACTS:	COPPER ALLOY
INSULATOR:	PBT, UL94V-0 RATED, BLACK 230°C PROCESS TEMP.
SHELL:	STEEL
FINISH:	
SHELL:	NICKEL

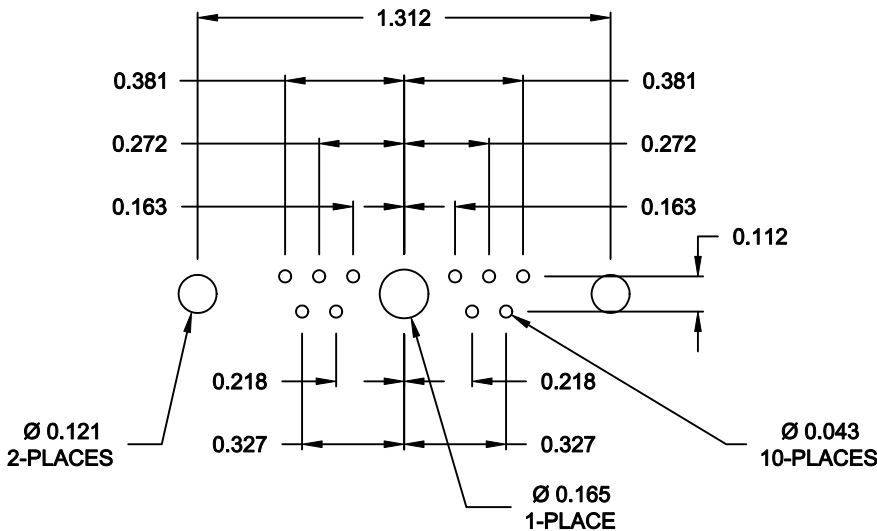


681M11W1203L001  
00 = 20 / 40 AMPS

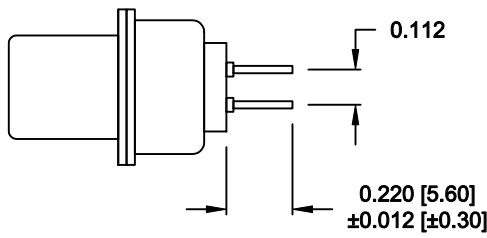
RoHS COMPLIANT

	THESE DRAWINGS AND SPECIFICATIONS ARE THE PROPERTY OF NorComp AND SHALL NOT BE REPRODUCED, COPIED OR USED AS THE BASIS FOR THE MANUFACTURE OF SALE OF APPARATUS WITHOUT WRITTEN PERMISSION.	DRAWN: <b>M. SIGMON</b>		DATE: <b>07-19-13</b>		
		CHECKED: <b>X</b>		DATE: <b>X</b>		
	<b>NorComp</b>	SCALE: <b>N.T.S.</b>	SHEET <b>1</b>		OF <b>2</b>	REV <b>0</b>
		DWG NO. <b>681M11W1203L001</b>				

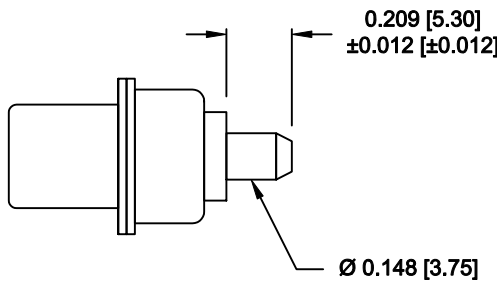
NOTE:  
SIGNAL AND POWER CONTACTS  
COME PRE-LOADED INTO INSULATORS



RECOMMENDED PCB LAYOUT




SIGNAL CONTACTS



POWER CONTACTS

RoHS COMPLIANT

	THESE DRAWINGS AND SPECIFICATIONS ARE THE PROPERTY OF NorComp AND SHALL NOT BE REPRODUCED, COPIED OR USED AS THE BASIS FOR THE MANUFACTURE OF SALE OF APPARATUS WITHOUT WRITTEN PERMISSION.	DRAWN: <b>M. SIGMON</b>		DATE: <b>07-19-13</b>	
		CHECKED: <b>X</b>		DATE: <b>X</b>	
<b>NorComp</b>	SCALE: <b>N.T.S.</b>		SHEET <b>2</b> OF <b>2</b>		REV <b>0</b>
	DWG NO. <b>681M11W1203L001</b>				