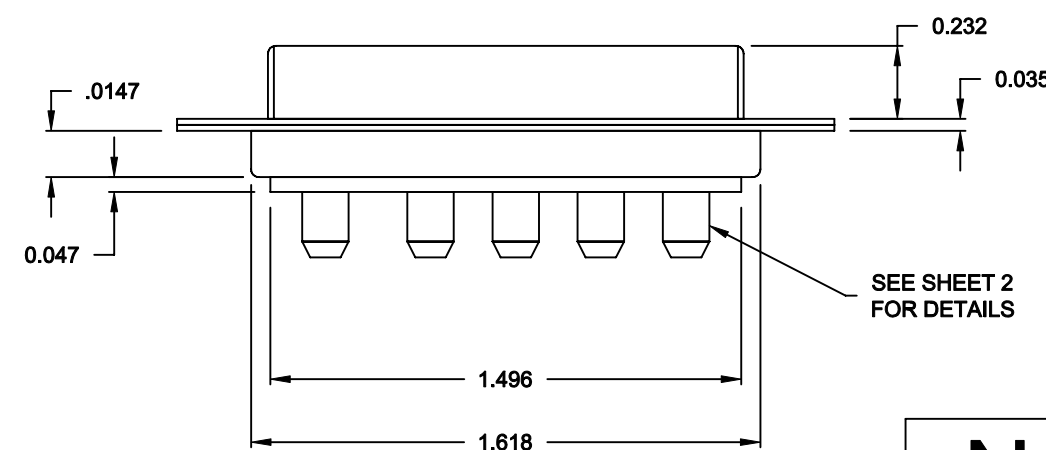
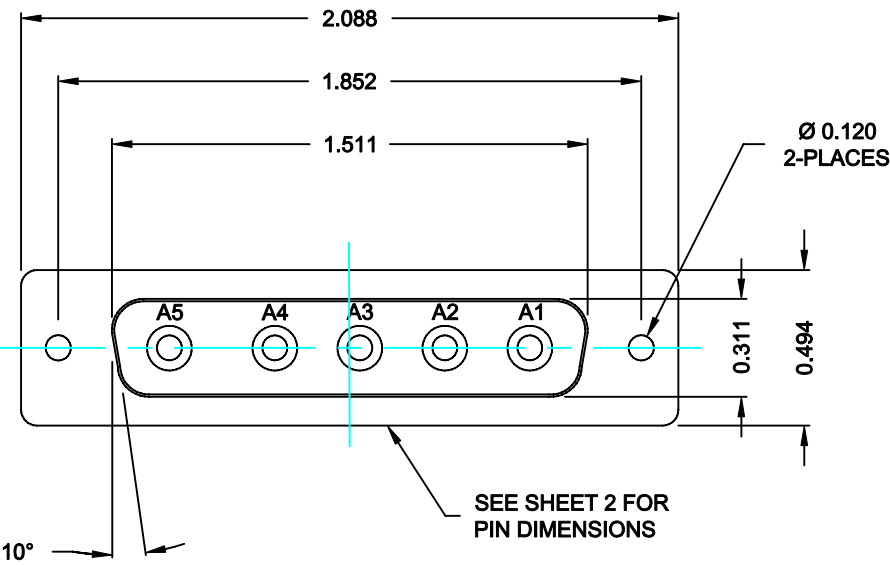


DESCRIPTION: POWER - VERTICAL BOARD - FEMALE



SPECIFICATIONS:


ELECTRICAL:  
INSULATOR RESISTANCE: 5,000 MegOHMS Min.  
DIELECTRIC WITHSTANDING: 1,000VAC r.m.s.  
OPERATING TEMPERATURE: -55° C ~ +125° C  
CONTACT RESISTANCE: 30 MilliOHMS Max.  
POWER PINS: SEE PART No. BELOW

MECHANICAL:  
CONTACT INSERTION FORCE: 4.5 Kg Max.  
CONTACT SEPARATOR FORCE: 0.3Kg Min.

MATERIALS:  
CONTACTS: BRASS  
INSULATOR: PBT UL94V-0 RATED,  
230°C PROCESS TEMP.  
STEEL  
SHELL:  
FINISH: NICKEL  
SHELL:

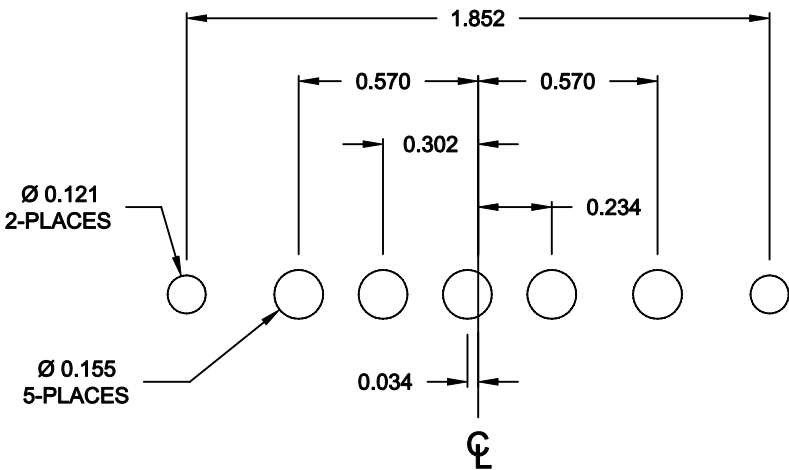
6815W5203L001  
00 = 20 / 40 AMPS

RoHS COMPLIANT

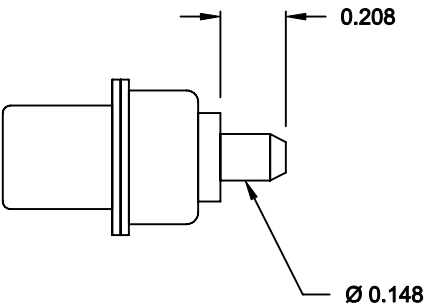
	THESE DRAWINGS AND SPECIFICATIONS ARE THE PROPERTY OF NorComp AND SHALL NOT BE REPRODUCED, COPIED OR USED AS THE BASIS FOR THE MANUFACTURE OF SALE OF APPARATUS WITHOUT WRITTEN PERMISSION.	DRAWN: <b>C. SMITH</b>		DATE: <b>09-19-06</b>		
		CHECKED: <b>X</b>		DATE: <b>X</b>		
		SCALE: <b>N.T.S.</b>		SHEET <b>1</b> OF <b>2</b>		REV <b>0</b>
<b>NorComp</b>		DWG NO. <b>6815W5203L001</b>				

DESCRIPTION: 681 SERIES CONTACTS

NOTE:  
POWER CONTACTS COME  
PRE-LOADED INTO INSULATORS




RECOMMENDED PCB LAYOUT



POWER CONTACTS

RoHS COMPLIANT

	THESE DRAWINGS AND SPECIFICATIONS ARE THE PROPERTY OF NorComp AND SHALL NOT BE REPRODUCED, COPIED OR USED AS THE BASIS FOR THE MANUFACTURE OF SALE OF APPARATUS WITHOUT WRITTEN PERMISSION.	DRAWN: <b>C. SMITH</b>		DATE: <b>09-19-06</b>	
		CHECKED: <b>X</b>		DATE: <b>X</b>	
<b>NorComp</b>		SCALE: <b>N.T.S.</b>	SHEET <b>2</b> OF <b>2</b>		REV <b>0</b>
		DWG NO. <b>6815W5203L001</b>			