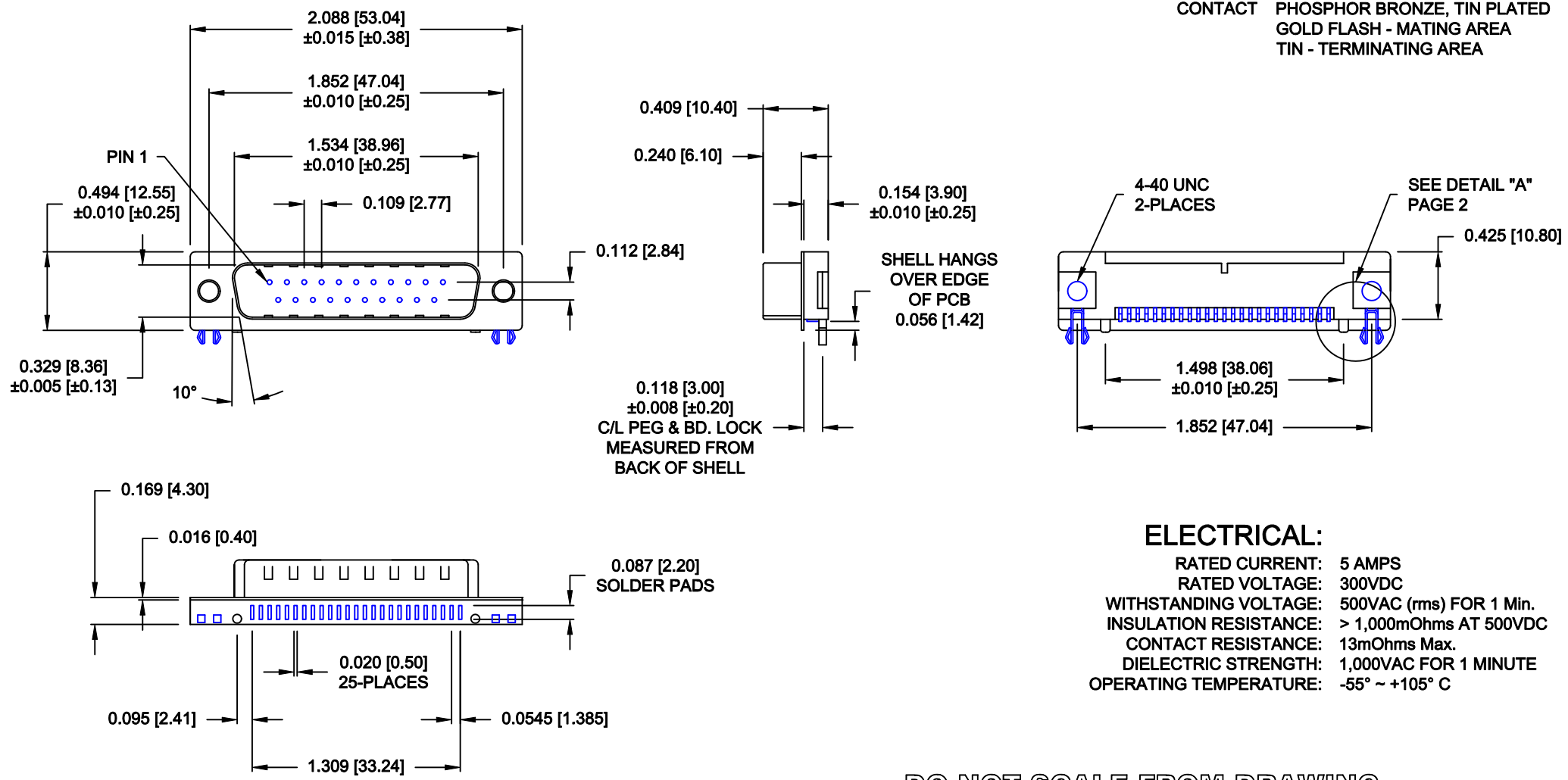


DESCRIPTION: 25 POS - MALE - SURFACE MOUNT

MATERIAL/FINISH:



SHELL: STEEL, NICKEL PLATED
BRACKET: BRASS, NICKEL PLATED
INSULATOR: NYLON 6T-UL 94V-0, BLACK, (TEMP. RESISTANCE 250° C FOR 60 SEC.)
INSULATOR: PATONE #322C, COLOR = Pc99
CONTACT: PHOSPHOR BRONZE, TIN PLATED
GOLD FLASH - MATING AREA
TIN - TERMINATING AREA



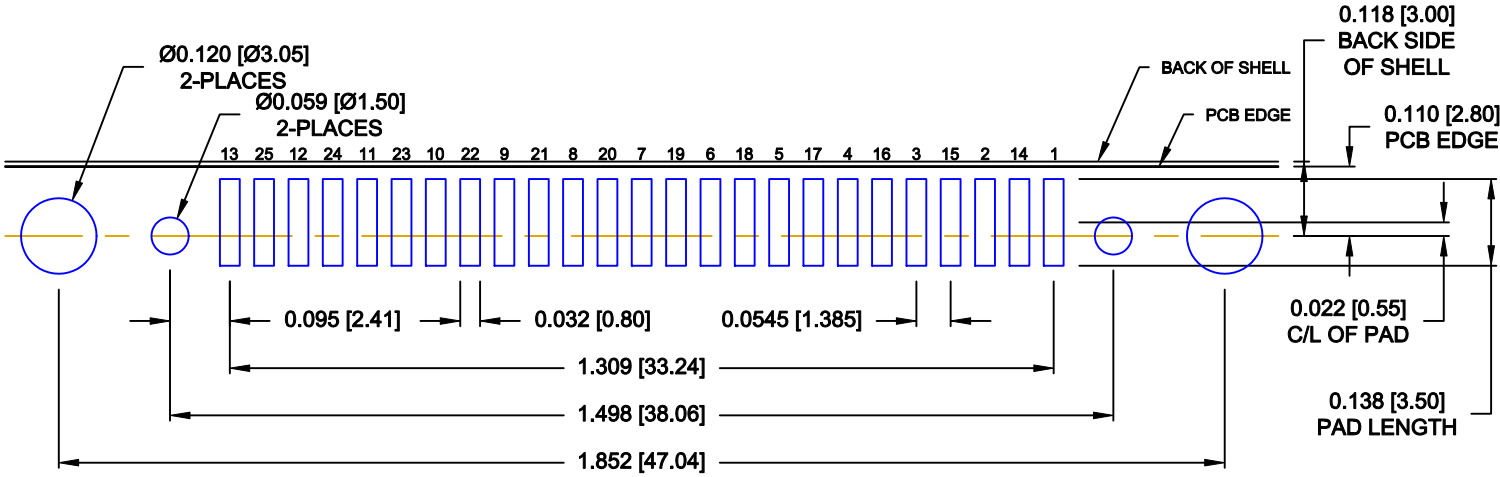
ELECTRICAL:

RATED CURRENT: 5 AMPS
RATED VOLTAGE: 300VDC
WITHSTANDING VOLTAGE: 500VAC (rms) FOR 1 Min.
INSULATION RESISTANCE: > 1,000mOhms AT 500VDC
CONTACT RESISTANCE: 13mOhms Max.
DIELECTRIC STRENGTH: 1,000VAC FOR 1 MINUTE
OPERATING TEMPERATURE: -55° ~ +105° C

DO NOT SCALE FROM DRAWING

	THESE DRAWINGS AND SPECIFICATIONS ARE THE PROPERTY OF NorComp AND SHALL NOT BE REPRODUCED, COPIED OR USED AS THE BASIS FOR THE MANUFACTURE OR SALE OF APPARATUS WITHOUT WRITTEN PERMISSION.	DRAWN: C. SMITH		DATE: 04-14-09		
		CHECKED:		DATE:		
			SCALE: 1.5 : 1	SHEET 1	OF 2	REV 8
			DWG NO. 190-025-163R001			

RoHS COMPLIANT

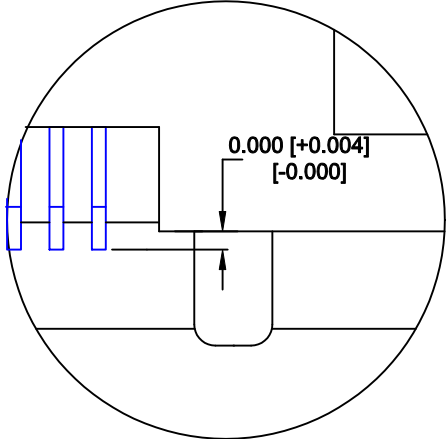


RECOMMENDED PCB LAYOUT

SCALE = 3 : 1

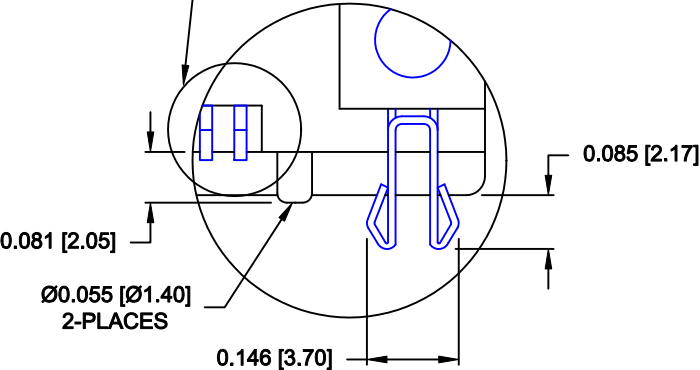
CONTACT ARRANGEMENT

13 25 12 24 11 23 10 22 9 21 8 20 7 19 6 18 5 17 4 16 3 15 2 14 1



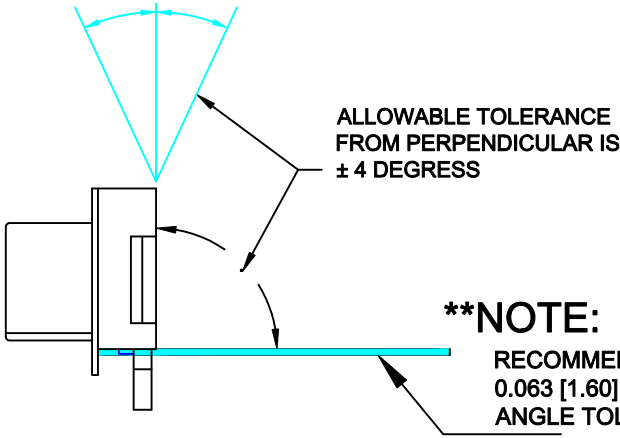
DETAIL "B"
CONTACT COPLANARITY

SEE DETAIL "B"
FOR CONTACT
COPLANARITY



DETAIL "A"

SCALE = 3 : 1



****NOTE:**
RECOMMENDED PCB THICKNESS IS
0.063 [1.60] ± 0.002 [0.05] TO MAINTAIN
ANGLE TOLERANCE

DO NOT SCALE FROM DRAWING

	THESE DRAWINGS AND SPECIFICATIONS ARE THE PROPERTY OF NorComp AND SHALL NOT BE REPRODUCED, COPIED OR USED AS THE BASIS FOR THE MANUFACTURE OR SALE OF APPARATUS WITHOUT WRITTEN PERMISSION.		DRAWN: C. SMITH		DATE: 04-14-09	
			CHECKED:		DATE:	
			SCALE: AS NOTED	SHEET 2	OF 2	REV 8
			DWG NO. 190-025-163R001			