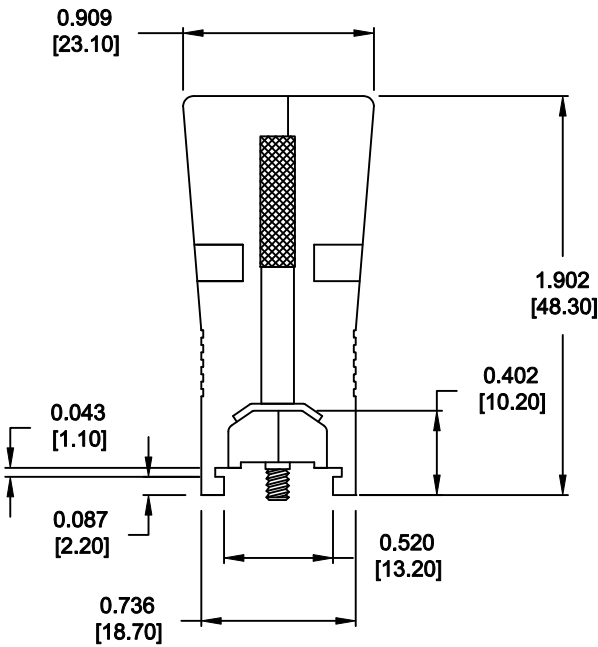
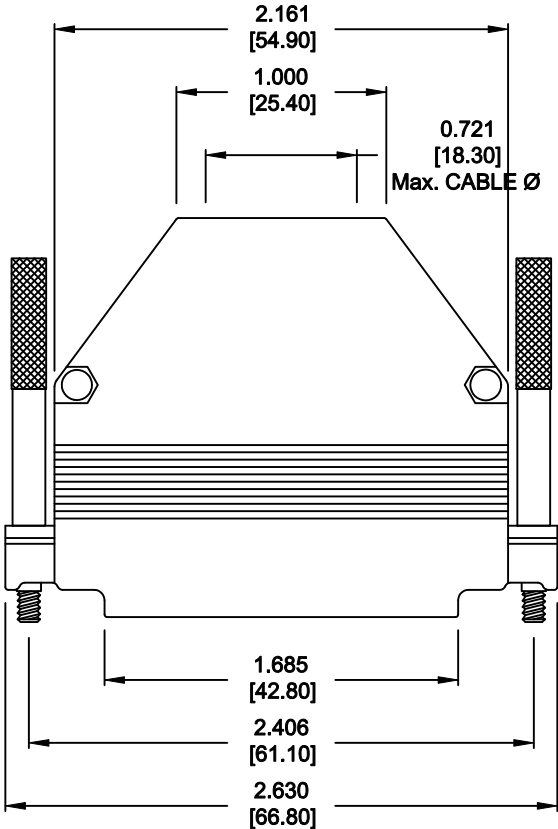


ALL TOLERANCES = ±0.004 [±0.10]
UNLESS OTHERWISE INDICATED




- BACK SHELL KIT INCLUDES:**
- 2 - BACK SHELL HALVES
 - 2 - 4-40 THUMBSCREWS
 - 2 - SADDLE WASHERS
 - 2 - HOUSING SCREWS
 - 2 - HOUSING NUTS
 - 1 - GROMMET TREE - VARIOUS SIZES
(NON-CONDUCTIVE GROMMETS)

MATERIAL: DIE-CAST ZINC ALLOY
PLATING: NICKEL
OPERATING
TEMPERATURE: -45°C TO +120°C

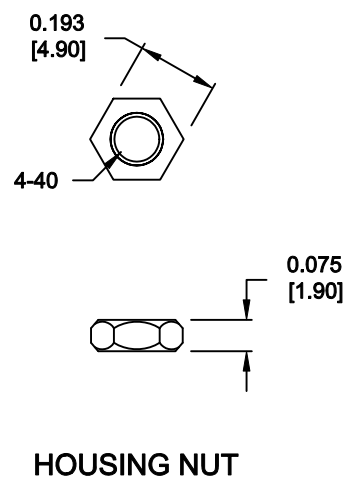
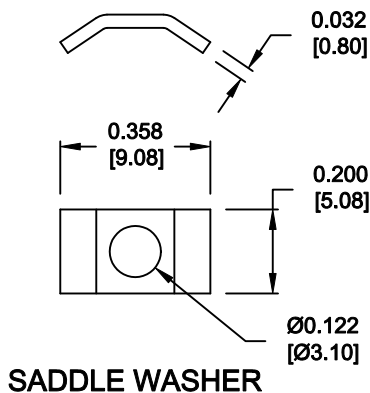
979-050-030 R 12 1

SERIES _____
POSITIONS _____
009 _____
015 _____
025 _____
037 _____
050 _____
MATERIAL _____
030 = ZINC _____
RoHS COMPLIANT _____
R = HIGH TEMP. PROCESS _____
PLATING _____
12 = NICKEL _____
PUT-UPS _____
1 = KIT _____

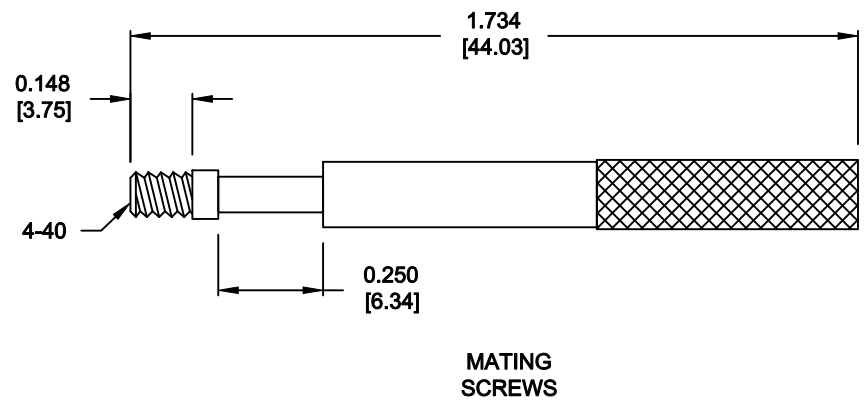
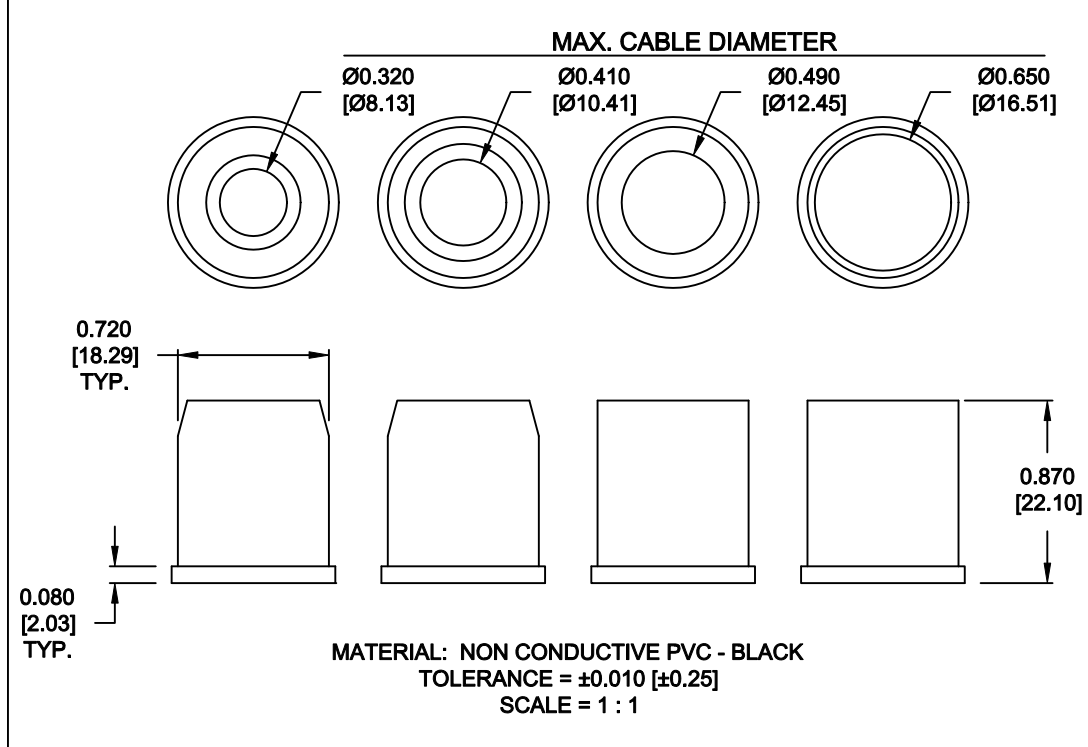
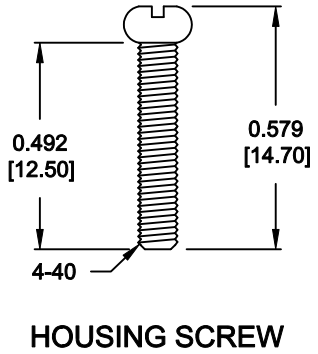
DO NOT SCALE FROM DRAWING

	THESE DRAWINGS AND SPECIFICATIONS ARE THE PROPERTY OF NorComp AND SHALL NOT BE REPRODUCED, COPIED OR USED AS THE BASIS FOR THE MANUFACTURE OF SALE OF APPARATUS WITHOUT WRITTEN PERMISSION.	DRAWN: C. SMITH		DATE: 04-20-10		
		CHECKED:		DATE:		
NorComp		SCALE: 1 : 1		SHEET 1	OF 2	REV 2
		DWG NO. 979-050-030R121				

RoHS COMPLIANT



ALL HARDWARE:
MATERIAL = BRASS
PLATING = NICKEL
TOLERANCE = ±0.002 [±0.05]
SCALE = 2 : 1



DO NOT SCALE FROM DRAWING

RoHS COMPLIANT

	THESE DRAWINGS AND SPECIFICATIONS ARE THE PROPERTY OF NorComp AND SHALL NOT BE REPRODUCED, COPIED OR USED AS THE BASIS FOR THE MANUFACTURE OF SALE OF APPARATUS WITHOUT WRITTEN PERMISSION.		DRAWN: C. SMITH		DATE: 04-20-10	
			CHECKED:		DATE:	
	NorComp		SCALE: AS SHOWN		SHEET 2 OF 2	
DWG NO. 979-050-030R121			REV 2			