

ALL TOLERANCES = ±0.004 [±0.10]  
UNLESS OTHERWISE INDICATED

BACK SHELL KIT INCLUDES:

- 2 - BACK SHELL HALVES
- 2 - 4-40 MATING SCREWS
- 2 - SADDLE WASHERS
- 2 - HOUSING SCREWS
- 2 - HOUSING NUTS
- 1 - GROMMET TREE - VARIOUS SIZES  
(NON-CONDUCTIVE GROMMETS)

MATERIAL: DIE-CAST ZINC ALLOY  
PLATING: NICKEL  
OPERATING  
TEMPERATURE: -45°C TO +120°C

979-025-030 R 12 1

SERIES

POSITIONS

009

015

025

037

050

MATERIAL

030 = ZINC

RoHS COMPLIANT

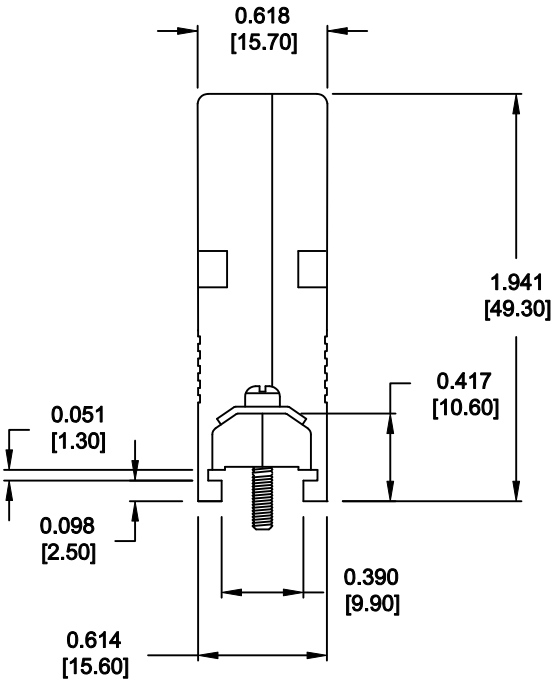
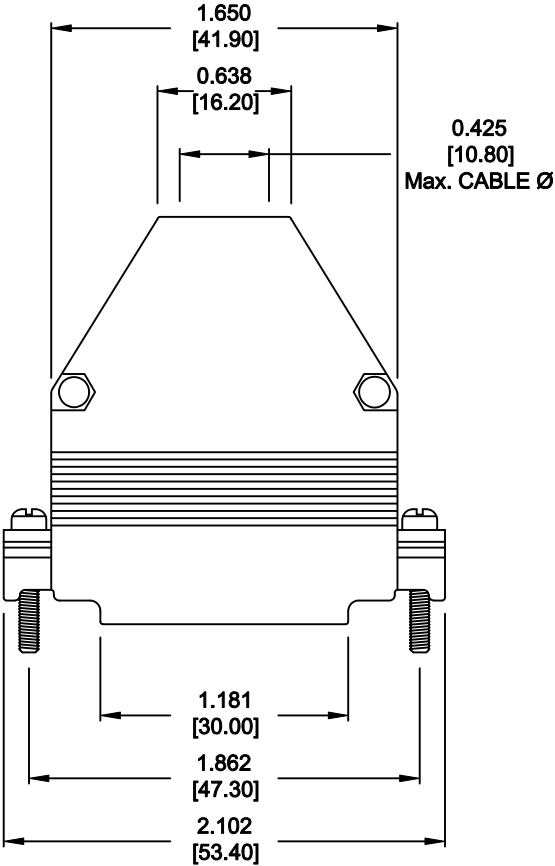
R = HIGH TEMP. PROCESS

PLATING

12 = NICKEL


PUT-UPS

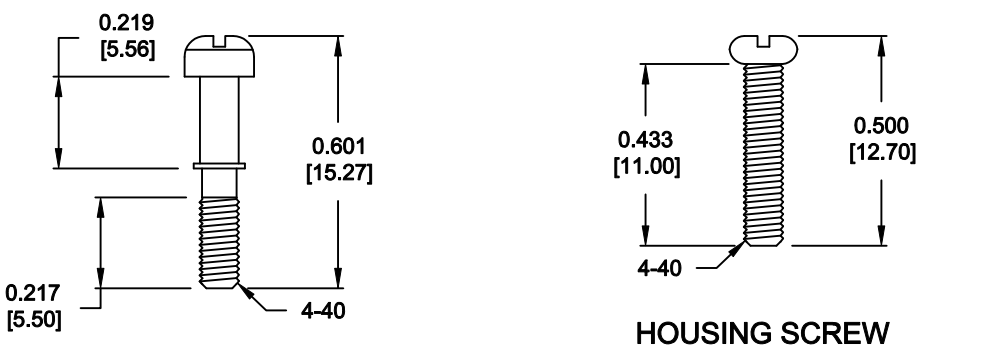
1 = KIT



DO NOT SCALE FROM DRAWING

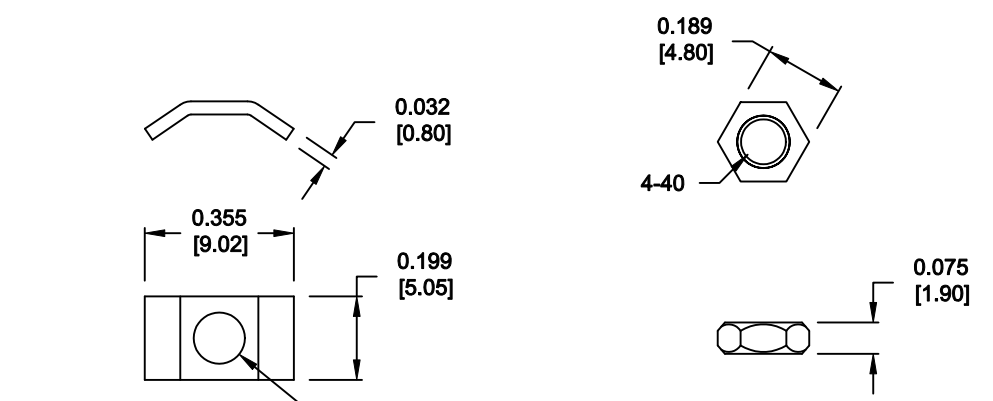
RoHS COMPLIANT

	THESE DRAWINGS AND SPECIFICATIONS ARE THE PROPERTY OF NorComp AND SHALL NOT BE REPRODUCED, COPIED OR USED AS THE BASIS FOR THE MANUFACTURE OF SALE OF APPARATUS WITHOUT WRITTEN PERMISSION.	DRAWN: <b>C. SMITH</b>		DATE: <b>04-20-10</b>		
		CHECKED:		DATE:		
<b>NorComp</b>			SCALE: <b>1 : 1</b>	SHEET <b>1</b>	OF <b>2</b>	REV <b>2</b>
			DWG NO. <b>979-025-030R121</b>			



MATING SCREW

HOUSING SCREW

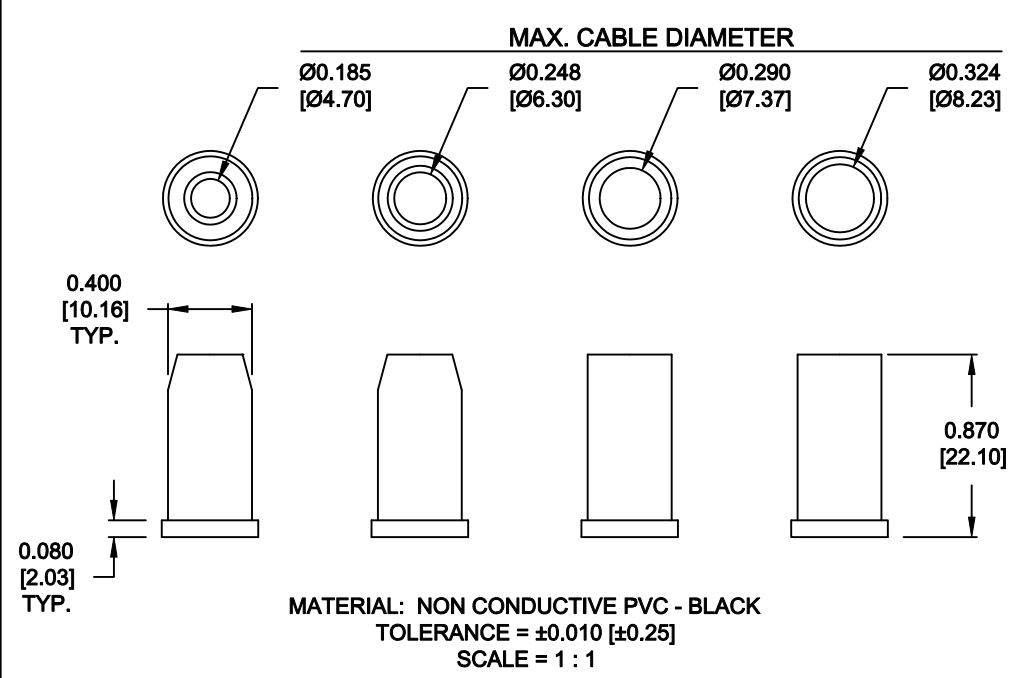


SADDLE WASHER


HOUSING NUT

ALL HARDWARE:  
MATERIAL = BRASS  
PLATING = NICKEL  
TOLERANCE = ±0.002 [±0.05]  
SCALE = 2 : 1

RoHS COMPLIANT



DO NOT SCALE FROM DRAWING

	THESE DRAWINGS AND SPECIFICATIONS ARE THE PROPERTY OF NorComp AND SHALL NOT BE REPRODUCED, COPIED OR USED AS THE BASIS FOR THE MANUFACTURE OF SALE OF APPARATUS WITHOUT WRITTEN PERMISSION.	DRAWN: <b>C. SMITH</b>		DATE: <b>04-20-10</b>		
		CHECKED:		DATE:		
<b>NorComp</b>		SCALE: <b>AS SHOWN</b>		SHEET <b>2</b> OF <b>2</b>		REV <b>2</b>
		DWG NO. <b>979-025-030R121</b>				