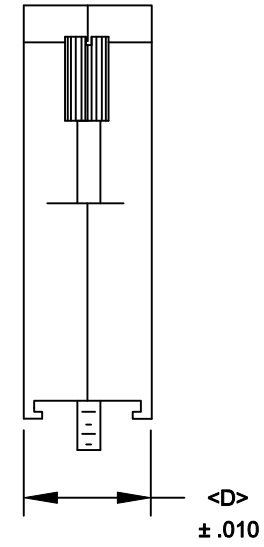
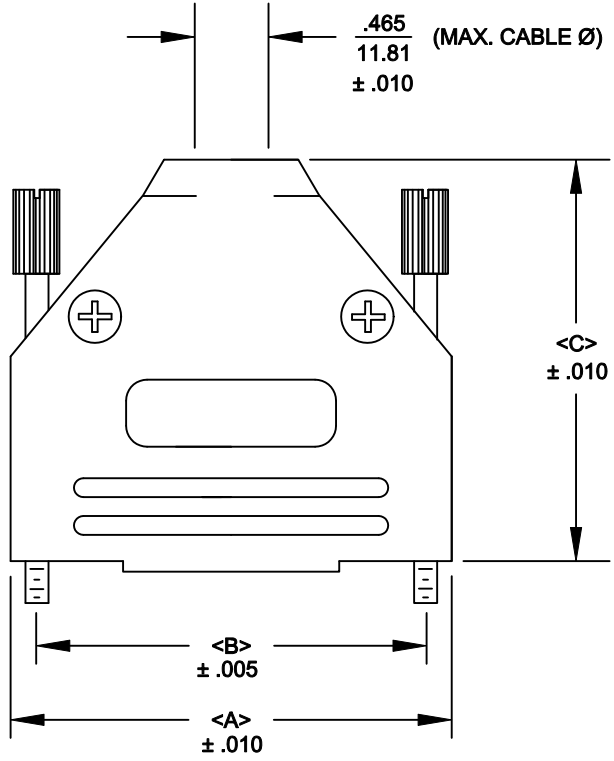


DESCRIPTION: 970 SERIES D-SUB BACKSHELL

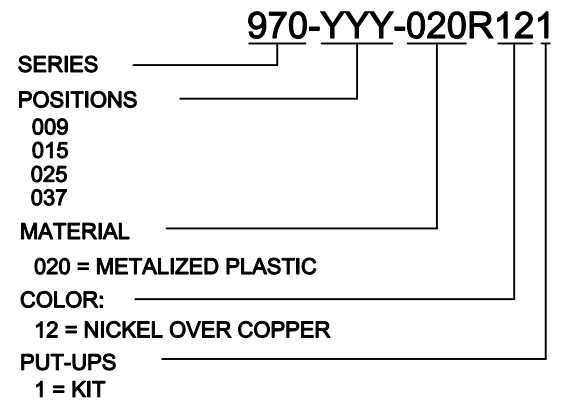
BACKSHELL KIT INCLUDES:

- (2) BACKSHELL HALVES
- (2) 4-40 THUMBSCREWS
- (2) HOUSING SCREWS / NUTS
- (1) SET OF COMPRESSION INSERTS-VARIOUS SIZES
 $\varnothing 0.157$ [4.0], $\varnothing 0.197$ [5.0], $\varnothing 0.276$ [7.0], $\varnothing 0.394$ [10.0]


- PLASTIC: ABS VH-0800 - NICKEL PLATED - UL94-HB
- JACKSCREWS: STEEL
- M3 HOODSCREWS: STEEL
- COMPRESSION INSERT: ABS UL 94-HB
- M3 NUT: STEEL
- OPERATING TEMP: - 30°C TO + 90°C



| POS. | A | B | C | D |
|------|-------|-------|-------|-------|
| 9 | 1.228 | .984 | 1.571 | .590 |
| | 31.19 | 24.99 | 39.90 | 14.99 |
| 15 | 1.555 | 1.312 | 1.534 | .590 |
| | 39.50 | 33.32 | 38.96 | 14.99 |
| 25 | 2.102 | 1.852 | 1.913 | .590 |
| | 53.39 | 47.04 | 48.59 | 14.99 |
| 37 | 2.744 | 2.500 | 2.110 | .590 |
| | 69.70 | 63.50 | 53.59 | 14.99 |



RoHS COMPLIANT

| | | | | | |
|--|---|--|------------------------------|------------------------|--------|
|  | THESE DRAWINGS AND SPECIFICATIONS ARE THE PROPERTY OF NorComp AND SHALL NOT BE REPRODUCED, COPIED OR USED AS THE BASIS FOR THE MANUFACTURE OR SALE OF APPARATUS WITHOUT WRITTEN PERMISSION. | | DRAWN: PAM JENKINS | DATE: 6-9-05 | |
| | <h1>NorComp</h1> | | | CHECKED: | DATE: |
| SCALE | | | | SHEET 1 OF 1 | REV 10 |
| DWG NO. 970-YYY-020R121 | | | | | |