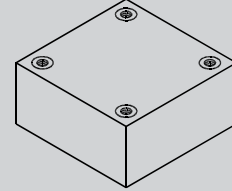


5,000 V - 20,000 V Single Phase Bridge

2.0 A Forward Current

70 ns Recovery Time

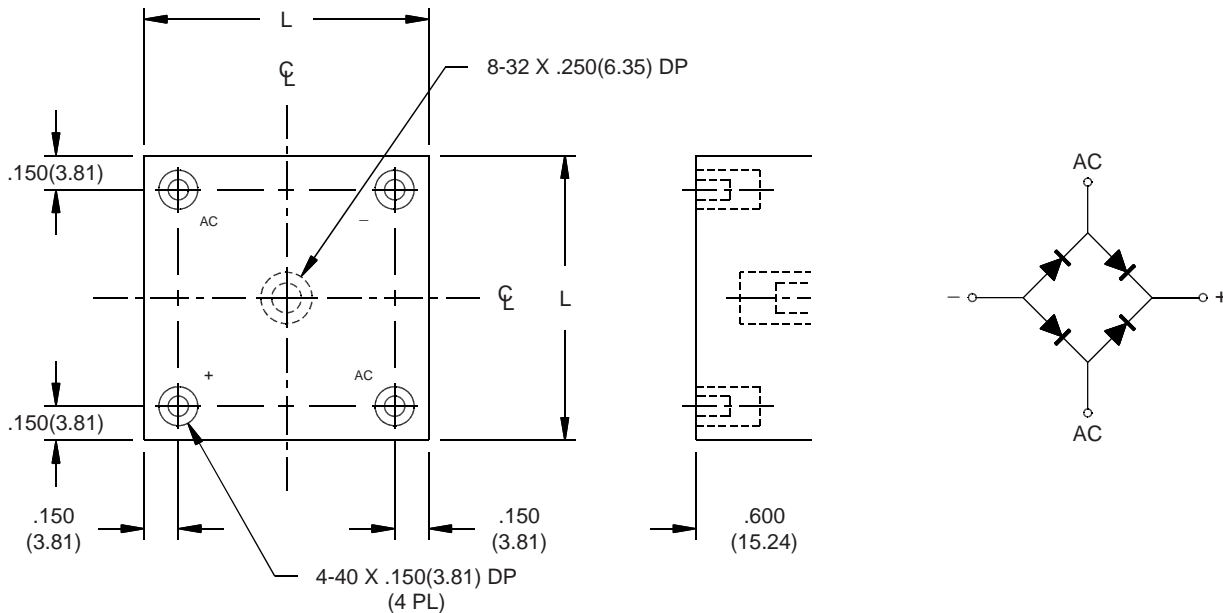
SPB50UFB
SPB100UFB
SPB150UFB
SPB200UFB



ELECTRICAL CHARACTERISTICS AND MAXIMUM RATINGS

Part Number	Working Reverse Voltage (Vrwm)	Average Rectified Current (Io)			Reverse Current @ Vrwm (Ir)		Forward Voltage (Vf)		1 Cycle Surge Current tp=8.3ms (Ifsm)	Repetitive Surge Current (Ifrm)	Reverse Recovery Time (1) (Trr)	Case Length (L)
		70 °C	75 °C	75 °C	75 °C	100 °C	25 °C	75 °C				
		Oil	Heatsink	No Heatsink								
	Volts	Amps	Amps	Amps	µA	µA	Volts	Amps	Amps	Amps	ns	in.
SPB50UFB	5000	2.0	1.5	0.70	1.0	25	12.0	1.5	50	10	70	1.50
SPB100UFB	10000	2.0	1.5	0.70	1.0	25	18.0	1.5	50	10	70	1.75
SPB150UFB	15000	2.0	1.5	0.70	1.0	25	30.0	1.5	50	10	70	2.25
SPB200UFB	20000	2.0	1.5	0.70	1.0	25	36.0	1.5	50	10	70	2.50

(1)Trr Testing: If=0.5A, Ir=1.0A, Irr=0.25A *Op. Temp.= -55°C to +150°C Stg. Temp.= -55°C to +150°C



Dimensions: In. (mm) • All temperatures are ambient unless otherwise noted. • Data subject to change without notice.



VOLTAGE MULTIPLIERS INC.
 8711 W. Roosevelt Ave.
 Visalia, CA 93291

TEL 559-651-1402
 FAX 559-651-0740
www.voltagemultipliers.com

SPB50UFB SPB100UFB SPB150UFB SPB200UFB

