

2,000 V - 5,000 V Rectifiers
2.0 A - 5.0 A Forward Current
70 ns Recovery Time

1N6513U
1N6515U
1N6517U

SURFACE MOUNT
HERMETICALLY SEALED



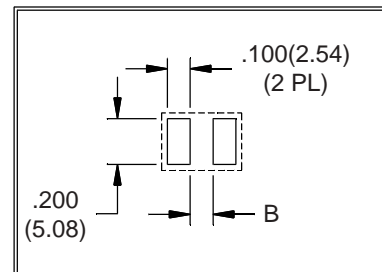
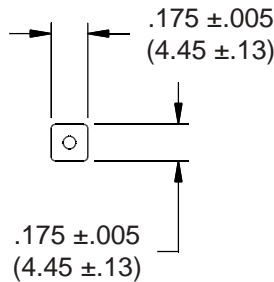
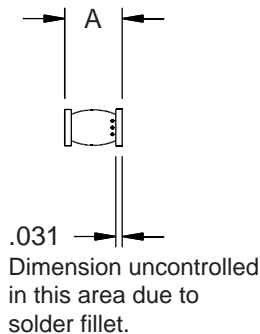
JANTX JANTXV

ELECTRICAL CHARACTERISTICS AND MAXIMUM RATINGS

Part Number	Working Reverse Voltage (V _{rw})	Average Rectified Current (I _o)		Reverse Current @ V _{rw} (I _r)		Forward Voltage (V _f)		1 Cycle Surge Current t _p =8.3ms (I _{fsm})	Repetitive Surge Current (I _{frm})	Reverse Recovery Time (3) (T _{rr})	Thermal Impd. θ _{J-C}	Junction Cap. @50VDC @1kHz (C _j)
		55 °C(1)	100 °C(2)	25 °C	100 °C	25 °C	25 °C	25 °C	25 °C	25 °C	25 °C	
	Volts	Amps	Amps	µA	µA	Volts	Amps	Amps	Amps	ns	°C/ W	pF
1N6513U	2000	5.0	3.3	1.0	25	3.5	2.0	100	15	70	4	25
1N6515U	3000	3.5	2.3	1.0	25	6.0	1.5	60	10	70	4	20
1N6517U	5000	2.0	1.3	1.0	25	8.0	1.0	40	8	70	4	16

(1)TC=55°C (2)TC=100°C (3)I_f=0.5A, I_r=1.0A, I_{rr}=0.25A *Op. Temp.= -65°C to +175°C Stg. Temp.= -65°C to +200°C

Markings:
 Three Dots for polarity.



Part	A	B
1N6513U	.240 ±.015 (6.10 ±.38)	.105(2.67)
1N6515U	.260 ±.015 (6.60 ±.38)	.125(3.18)
1N6517U	.280 ±.015 (7.11 ±.38)	.145(3.68)



Dimensions: In. (mm) • All temperatures are ambient unless otherwise noted. • Data subject to change without notice.



VOLTAGE MULTIPLIERS INC.
 8711 W. Roosevelt Ave.
 Visalia, CA 93291

TEL 559-651-1402
 FAX 559-651-0740
 www.voltagemultipliers.com

6

1N6513U 1N6515U 1N6517U

