

2,000 V - 5,000 V Rectifiers

0.8 A - 2.0 A Forward Current

30 ns - 50 ns Recovery Time

Z20FF3LL Z20FF5LL
Z50FF3LL Z50FF5LL

FORMED LEAD

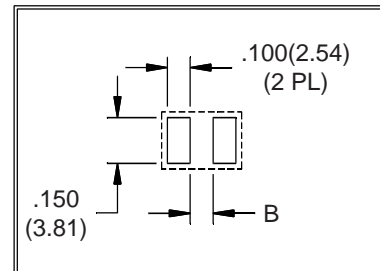
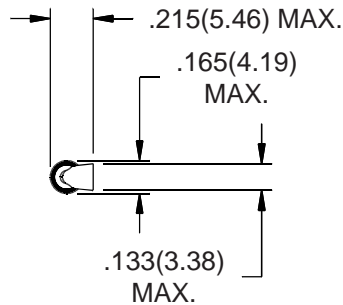
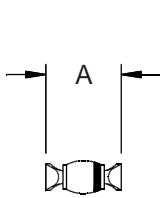


ELECTRICAL CHARACTERISTICS AND MAXIMUM RATINGS

Part Number	Working Reverse Voltage (V _{rw})	Average Rectified Current (I _o)		Reverse Current @ V _{rw} (I _r)		Forward Voltage (V _f)		1 Cycle Surge Current t _p =8.3ms (I _{fsm})	Repetitive Surge Current (I _{frm})	Reverse Recovery Time (3) (T _{rr})	Thermal Impd. θ _{J-C}	Junction Cap. @50VDC @1kHz (C _j)
		55 °C(1)	100 °C(2)	25 °C	100 °C	25 °C	25 °C	25 °C	25 °C	25 °C	25 °C	25 °C
	Volts	Amps	Amps	µA	µA	Volts	Amps	Amps	Amps	ns	°C/ W	pF
Z20FF3LL Z50FF3LL	2000 5000	2.0 0.8	1.2 0.4	1.0 1.0	25 25	6.0 12.5	0.75 0.36	65 22	10 4.0	30 30	5.0 5.0	20 16
Z20FF5LL Z50FF5LL	2000 5000	2.0 0.8	1.2 0.4	1.0 1.0	25 25	6.0 12.5	0.75 0.36	65 22	10 4.0	50 50	5.0 5.0	20 16

(1)TC=55°C (2)TC=100°C (3)I_f=0.5A, I_r=1.0A, I_{rr}=0.25A *Op. Temp.= -65°C to +175°C Stg. Temp.= -65°C to +200°C

6



Part	A	B
Z20FF3LL Z20FF5LL	.350(8.89) MAX.	.220(5.59)
Z50FF3LL Z50FF5LL	.390(9.91) MAX.	.260(6.60)



Dimensions: In. (mm) • All temperatures are ambient unless otherwise noted. • Data subject to change without notice.



VOLTAGE MULTIPLIERS INC.
 8711 W. Roosevelt Ave.
 Visalia, CA 93291

TEL 559-651-1402
 FAX 559-651-0740
 www.voltagemultipliers.com

Z20FF3LL Z50FF3LL Z20FF5LL Z50FF5LL

