

# 2,000 V - 5,000 V Rectifiers

0.15 A - 0.42 A Forward Current  
30 ns - 50 ns Recovery Time

**X20FF3L X20FF5L**  
**X50FF3L X50FF5L**

**SURFACE MOUNT**  
**HERMETICALLY SEALED**

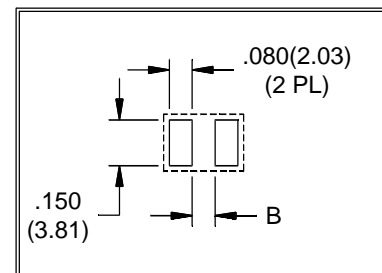
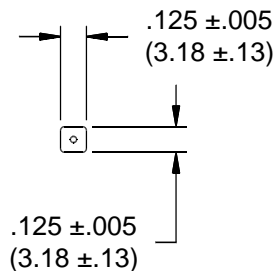
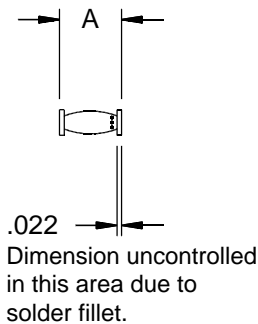


## ELECTRICAL CHARACTERISTICS AND MAXIMUM RATINGS

Part Number	Working Reverse Voltage (V <sub>rw</sub> )	Average Rectified Current (I <sub>o</sub> )		Reverse Current @ V <sub>rw</sub> (I <sub>r</sub> )		Forward Voltage (V <sub>f</sub> )		1 Cycle Surge Current t <sub>p</sub> =8.3ms (I <sub>fsm</sub> )	Repetitive Surge Current (I <sub>frm</sub> )	Reverse Recovery Time (3) (T <sub>rr</sub> )	Thermal Impd. θ <sub>J-C</sub>	Junction Cap. @50VDC @1kHz (C <sub>j</sub> )
		55°C(1)	100°C(2)	25°C	100°C	25°C	25°C					
	Volts	Amps	Amps	μA	μA	Volts	Amps	Amps	Amps	ns	°C/ W	pF
X20FF3L X50FF3L	2000 5000	0.42 0.15	0.210 0.075	1.0 1.0	20 20	7.5 12.5	0.42 0.15	16 10	3.0 1.0	30 30	5.0 5.0	4.0 3.0
X20FF5L X50FF5L	2000 5000	0.42 0.15	0.210 0.075	1.0 1.0	20 20	7.5 12.5	0.42 0.15	16 10	3.0 1.0	50 50	5.0 5.0	4.0 3.0

(1)TC=55°C (2)TC=100°C (3)I<sub>f</sub>=12.5mA, I<sub>r</sub>=25.0mA, I<sub>rr</sub>=6.3mA \*Op. Temp.= -65°C to +175°C Stg. Temp.= -65°C to +200°C

Markings:  
Three Dots for polarity.



Part	A	B
X20FF3L	.275 ±.010 (6.99 ±.25)	.180(4.57)
X50FF3L	.310 ±.010 (7.87 ±.25)	.215(5.46)
X20FF5L	.265 ±.010 (6.73 ±.25)	.170(4.32)
X50FF5L	.300 ±.010 (7.62 ±.25)	.205(5.21)



Dimensions: In. (mm) • All temperatures are ambient unless otherwise noted. • Data subject to change without notice.



**VOLTAGE MULTIPLIERS INC.**  
8711 W. Roosevelt Ave.  
Visalia, CA 93291

TEL 559-651-1402  
FAX 559-651-0740  
www.voltagemultipliers.com

**6**

# X20FF3L X50FF3L X20FF5L X50FF5L

