

## STRADA-S LENSES FOR NICHIA 119 /219 LEDs



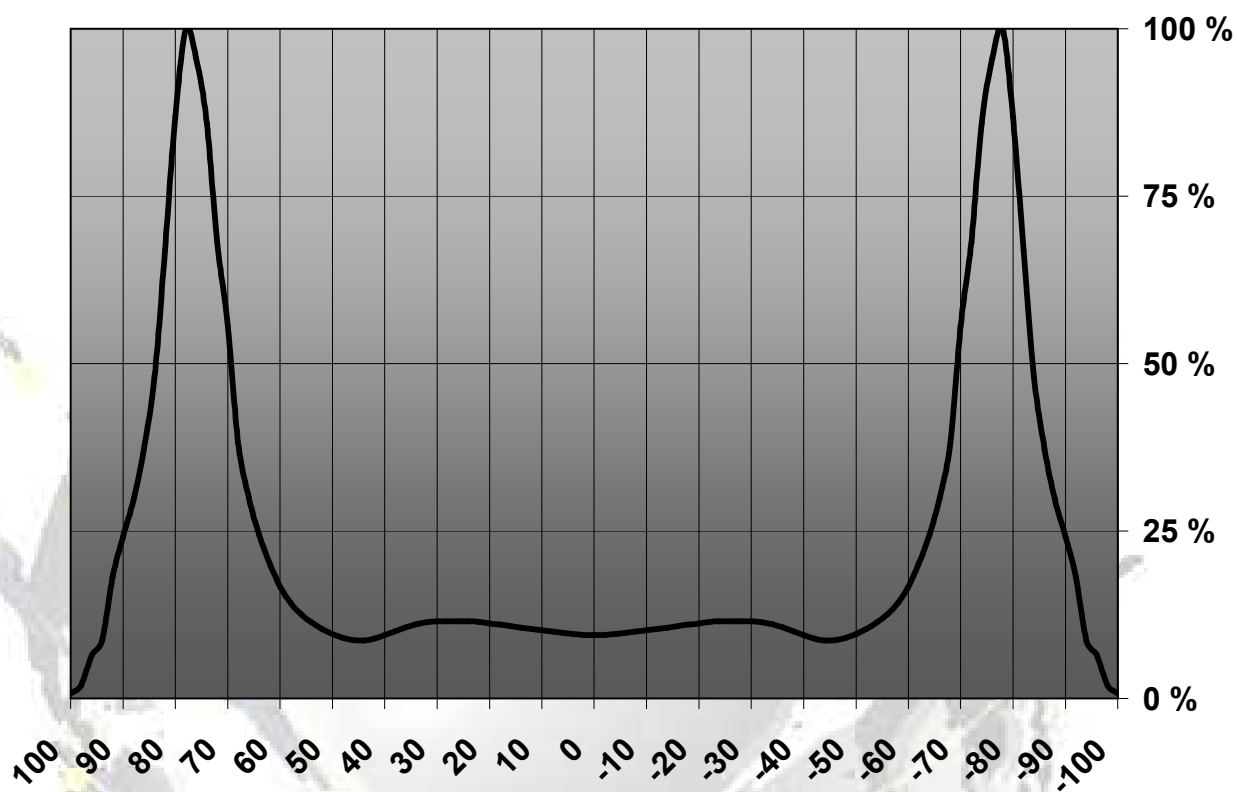
- Extremely wide SIDE-EMITTING design.
- Comes with integrated positioning pins.
- Lens material optical grade PMMA with high UV and temperature resistance (105°C/220°F). Allows use of high current and temperature conditions
- Best available optical efficiency, approximately 92%.
- Fastening to heat sink with or without PU foam adhesive tape of automotive grade, please select which suits the best for your needs.
- Please check fastening details from this link:  
([http://www.ledil.com/datasheets/DataSheet\\_TAPE.pdf](http://www.ledil.com/datasheets/DataSheet_TAPE.pdf))

## LENS TYPES

NAME	ORDERING CODE	FWHM Angle
Strada-S	C11249_Strada-S-N19	±69° & ±81°
Strada-S- TAPE	CA11248_Strada-S-N19-tape	±69° & ±81°

## MEASUREMENT DATA & DRAWING

Relative Intensity of C11249\_Strada-S-N119

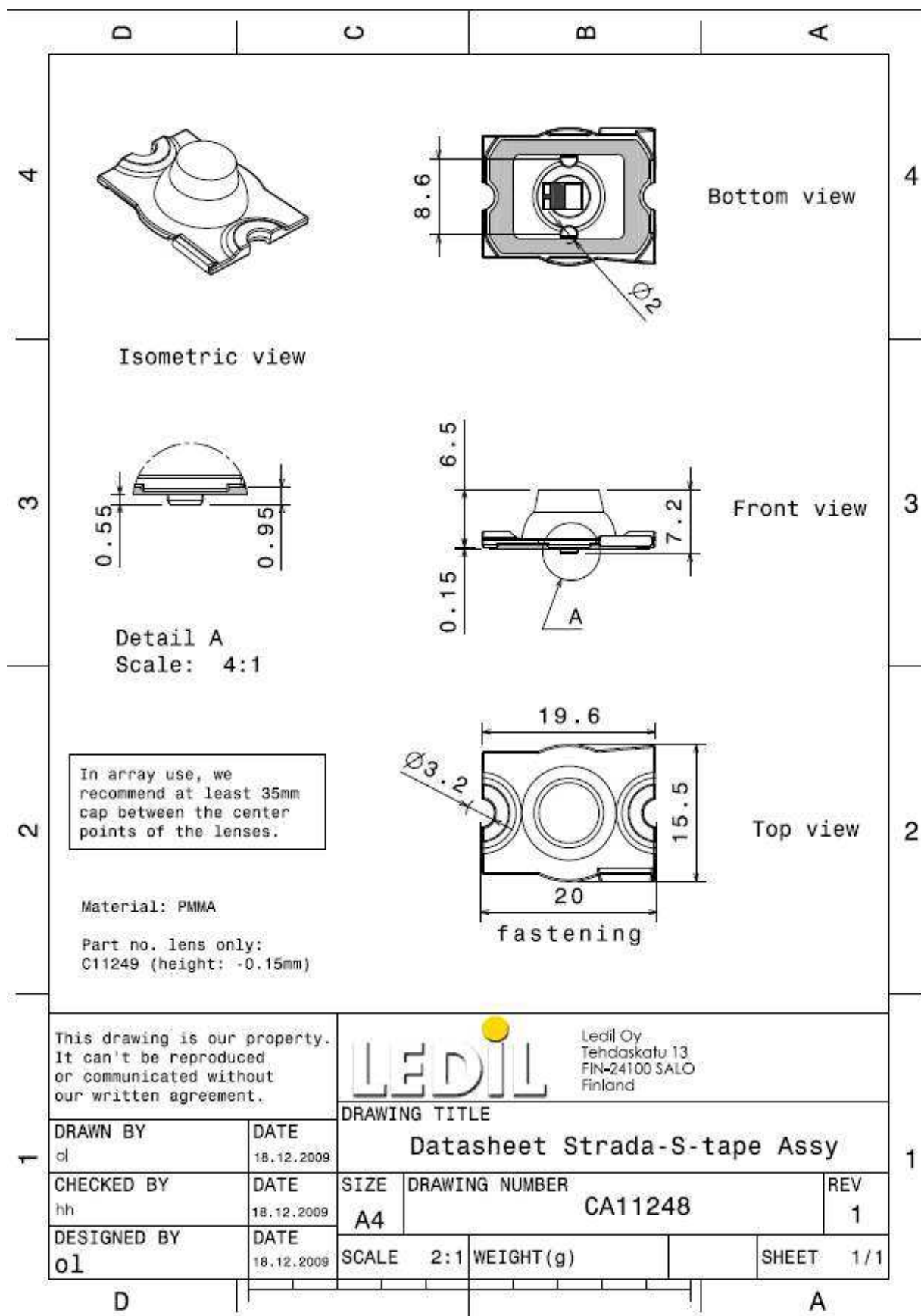


© Ledil Oy – PRELIMINARY - Subject to change without prior notice

Ledil Oy  
Tehdaskatu 13  
FIN-24100 SALO, Finland

[www.ledil.com](http://www.ledil.com)  
email: [ledil@ledil.com](mailto:ledil@ledil.com)  
FAX: +358-2-733 8001

2011-02-02



© Ledil Oy – PRELIMINARY - Subject to change without prior notice