

Apollo-3 Lenses for Luxeon®



© LEDIL 2007

- Use with Lumileds' lambertian Luxeon® I, III and K2 series of white and monochromate LEDs
- Lens material optical grade PMMA with high UV and temperature resistance (105°C/220°F)
- High optical efficiency, >85%
- No lens holder. Fastening to heat sink with droplets of glue. NOTE: legs go into the PCB by 1.2 mm only, do not go thru a normal MCPCB
- Diameter 50 mm (MR16)
- Medium lens is made using spot lens and placing a sub lens on top of it. Spot and wide lenses do not have sub lenses.
- Mechanical CAD models available upon request

LENS TYPES

NAME	ORDERING CODE	FWHM Angle
Apollo-3 spot	C10256_Apollo-3-S	±4°
Apollo-3 medium	CA10369_Apollo-3-M	±14°
Apollo-3 wide	C10363_Apollo-3-W	±23°



© LEDIL 2007

APOLLO-3-S



© LEDIL 2007

APOLLO-3-M



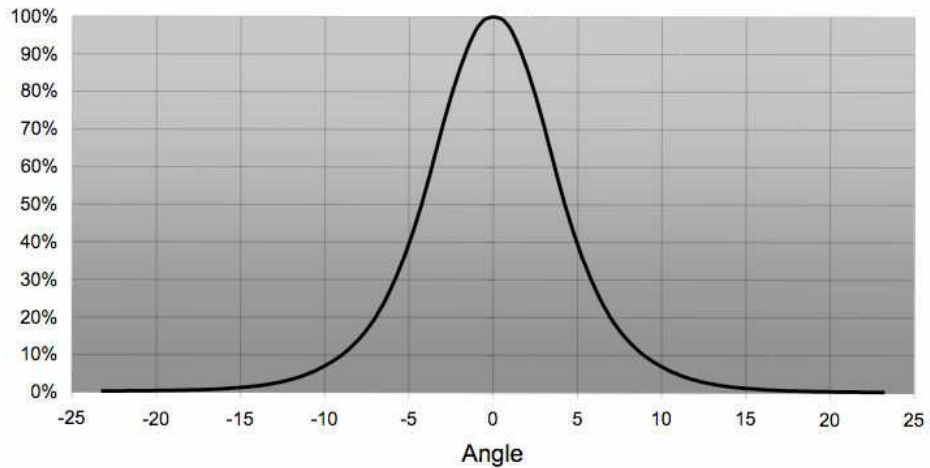
© LEDIL 2007

APOLLO-3-W

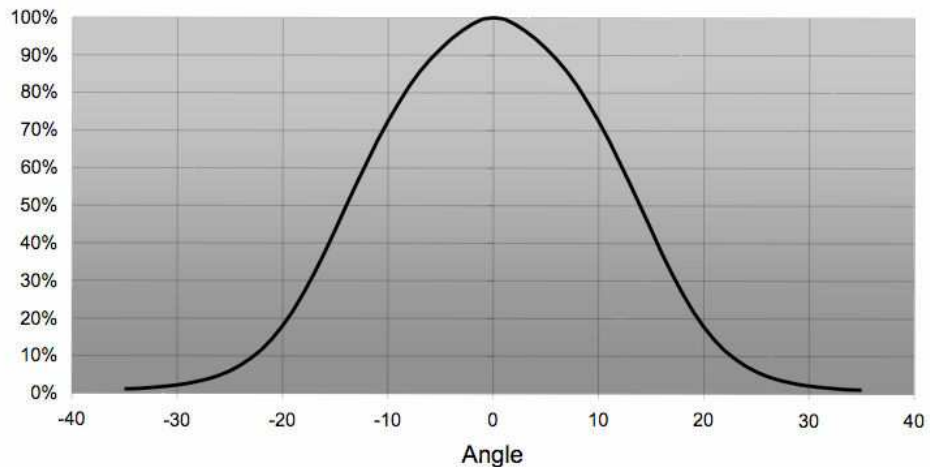
© Ledil Oy – PRELIMINARY - Subject to change without prior notice

MEASUREMENT DATA

Relative intensity of APOLLO-3-S

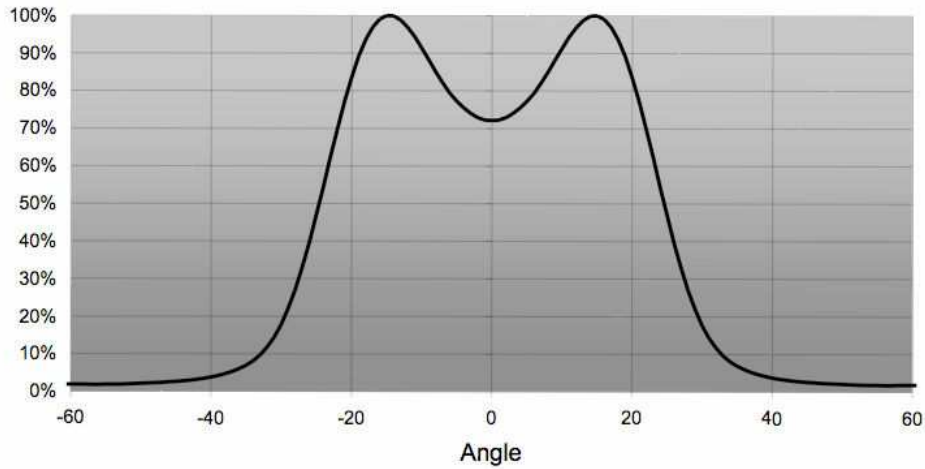


Relative intensity of Apollo-3-M



© Ledil Oy – PRELIMINARY - Subject to change without prior notice

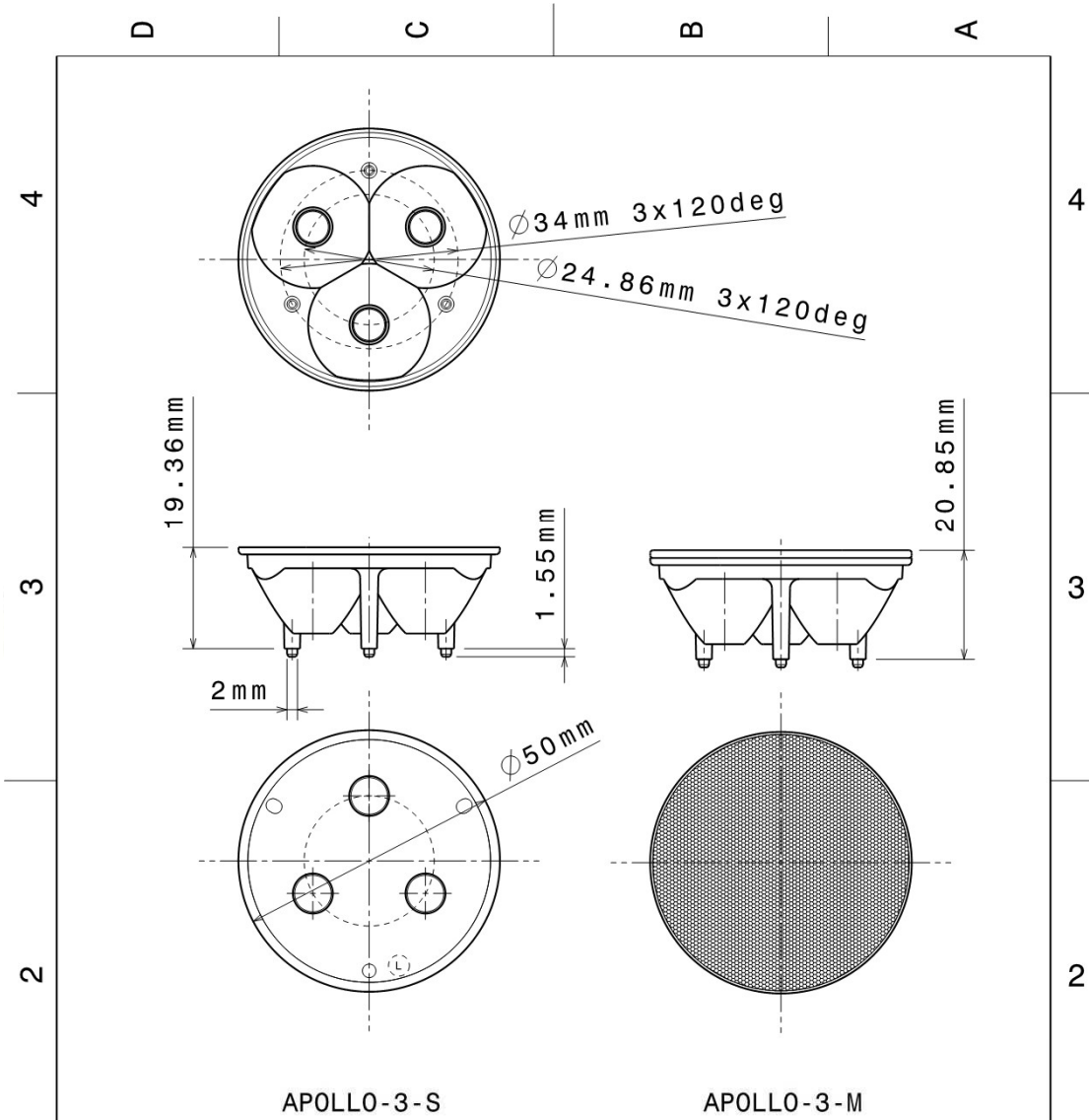
Relative intensity of APOLLO-3-W



PACKAGING

Lenses are packed in carton boxes of 264 pieces in each box.

DRAWINGS



Material: PMMA Clear, UV resistant

This drawing is our property. It can't be reproduced or communicated without our written agreement.



Ledil Oy
Tehdaskatu 13
FIN-24100 SALO
Finland

DRAWN BY TK		DATE 12.09.2007	DRAWING TITLE APOLLO-3-S & APOLLO-3-M		
CHECKED BY HH	DATE 02.05.2007	SIZE A4	DRAWING NUMBER CA10369	REV 0.4	
DESIGNED BY HH	DATE 02.05.2007	SCALE 1:1	WEIGHT (g)	SHEET 1/1	

© Ledil Oy - PRELIMINARY - Subject to change without prior notice